



TUNITAS CREEK BEACH IMPROVEMENT PROJECT

PROJECT INTRODUCTION

April 2020





SITE CONTEXT





WELCOME



ABOUT THE PROJECT

Tunitas Creek Beach will become San Mateo County's newest park!

The site is 58 acres, with lots of interesting history, incredible views, and a huge beach. In order to ensure the property functions safely and is protected for future visitors, we are working with the community to create adequate parking facilities, provide comfort stations and trail access to the beach, build a ranger station and design an iconic overlook area.

FINDING THE BALANCE

This will be a recreational and cultural resource for everyone. The project team will share three alternatives that consider changes to the site at a minimal, moderate, and intense level.

The goal is to find the right balance between providing safe access and creating recreational opportunities, while restoring sensitive habitat and protecting the bluffs and beach from detrimental impacts and misuse.

HISTORICAL AND CULTURAL RESOURCES



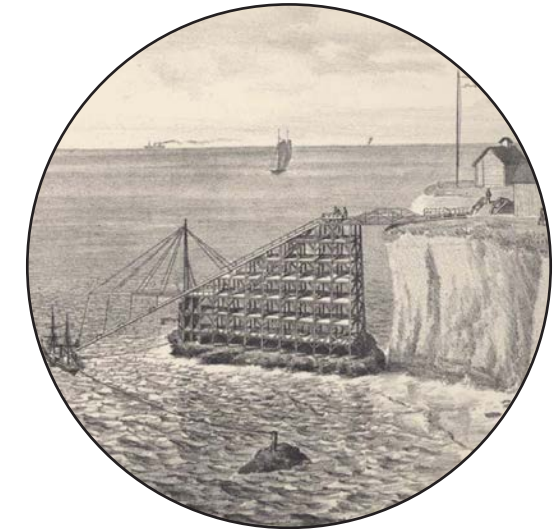
The San Francisco peninsula was home to the Ohlone tribes for thousands of years.



8 million acres of land released to private ownership, including land surrounding Tunitas Creek.



The Gaspar de Portolá expedition travels along the California coast and camps at Tunitas Creek Beach.



Gordon's Chute constructed just north of Tunitas Creek to load freight ships directly from the coastal bluffs.

The name "Tunitas" first appears, named after the Spanish name for the Nopales Cactus, or prickly pear (Tuñas).

The gold rush and California statehood lead to a rush of new immigrants and subdivision of lands surrounding Tunitas Creek.

pre-1800s

1769

1834-1838

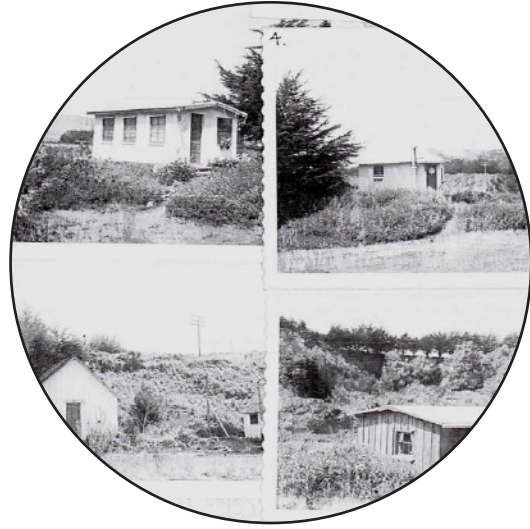
1839

1849-1850

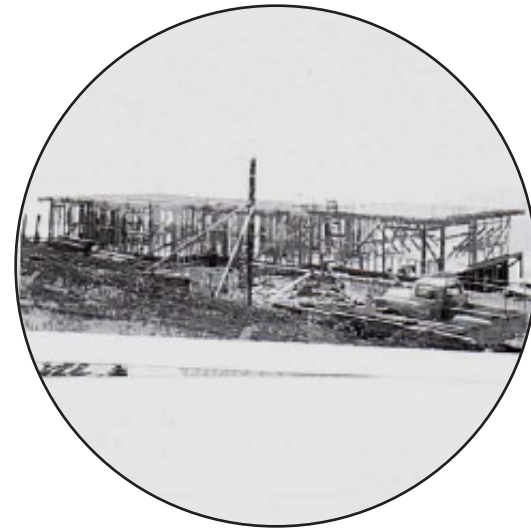
1873-1885



HISTORICAL AND CULTURAL RESOURCES



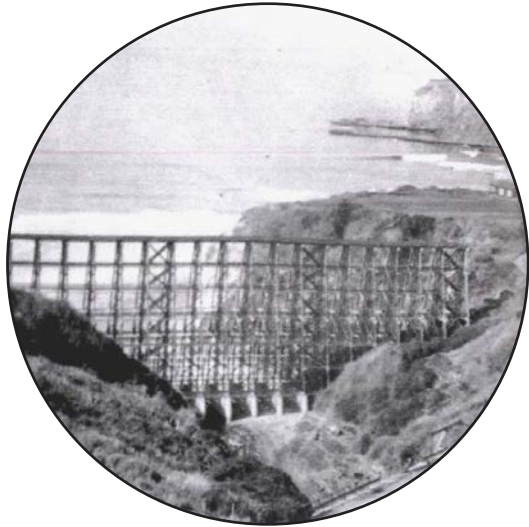
Several railroad worker's cottages continued to be used until the early 1980s.



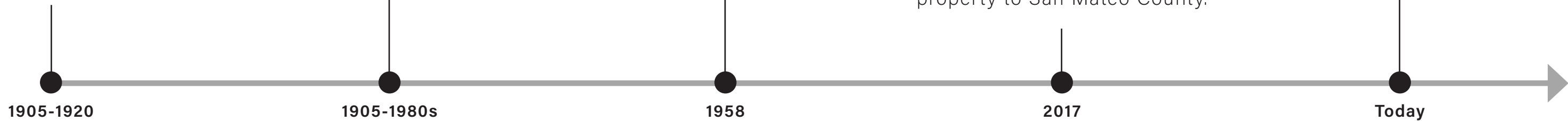
The residence on the project site is built. The structure still stands but was severely damaged in a 1998 fire and is not in use.



Today, Tunitas Creek Beach represents many things to many different people - a place for stunning natural beauty, unique habitat assemblages for rare and sensitive species, and a place for recreation and relaxation.



The Ocean Shore Railroad operates for 15 years, but the tracks were never finished. The trestle spanning Tunitas Creek was the southern terminus of the railroad; remnants of it can still be seen today.



CORE VALUES

Tunitas Creek Beach presents many wonderful possibilities and opportunities, and shared values can begin to provide direction and structure. Through various exercises - personal reflection, group discussion, and anonymous ranking - volunteer Community Advisory Committee members expressed the values that reflect their most deeply held beliefs. The San Mateo community will play a critical role in the development of the design, and existing outreach efforts have centered the project around **four core values**:



ENVIRONMENTAL PROTECTION

The project improves the environment and leads to enhanced stewardship.



EQUITY AND INCLUSION

Diverse and non-traditional communities are involved during project development.



EDUCATION AND AWARENESS

History and nature knowledge are made accessible through meaningful interpretation.



OUTDOOR EXPERIENCES

A variety of recreational experiences are available, from vista point to extended stays.

CHALLENGES TO PROTECTING CORE VALUES



CHALLENGES TO ENVIRONMENTAL PROTECTION

- | | | |
|---|---|---|
| Sensitivity of certain vegetation species | Steep erosion-prone slopes | Threatened wildlife habitat and nesting areas |
| Lack of waste management | Invasive species and poison oak throughout | Pollution of Tunitas Creek |
| Overuse of the beach | Costs of ongoing management and maintenance | Other |



CHALLENGES TO EQUITY AND INCLUSION

- | | | |
|---|--|---|
| Lack of existing ADA* accessibility | Barriers to transportation to get to the beach | Lack of widely-available online resources |
| Lack of spaces for community gatherings | Unsafe conditions make it difficult to reach the beach | Lack of restrooms create barriers to access |
| Other | | |



CHALLENGES TO EDUCATION AND AWARENESS

- | | | |
|---------------------------------------|-----------------------------------|--|
| Losing sense of community and privacy | Outreach to youth groups | Lack of public information about historic significance |
| Removal of the existing house | Vandalism of educational features | Other |



CHALLENGES TO OUTDOOR EXPERIENCES

- | | | |
|--|---|--|
| Removal of sensitive species to create trails | Difficulty of biking or walking to the beach | Parking lot creating barriers to viewpoints from highway |
| Costs associated with trail and park maintenance | Telephone poles and utility lines obstructing views | Existing unsafe conditions of steep footpaths |
| Unsanctioned trails through sensitive habitat | Degradation due to large parties and campouts | Other |



Let's hear from you! What challenges do you care most about? Respond in the survey at tunitascreekbeach.org!

**ADA: Americans with Disabilities Act. We will use this term to refer to features which meet the accessibility requirements for those with disabilities.*

OPPORTUNITIES FOR ENHANCING CORE VALUES



OPPORTUNITIES FOR ENVIRONMENTAL PROTECTION

Restoration of sensitive vegetation	Erosion control measures	Fenced-off wildlife habitat protection zones
Trash cans to prevent waste	Invasive species removal efforts	Fenced-off areas for sensitive vegetation
Protection of Monterey cypress and pine trees	Planting buffer between highway and parking lot	Other



OPPORTUNITIES FOR EQUITY AND INCLUSION

ADA parking spaces and access to overlook points	Visitor center	Active outreach to underserved populations
ADA accessible trails to mid-bluff features	Event spaces for communities to rent out	Multiple language translations for signage
Preservation of cultural resources	Play spaces	Other



OPPORTUNITIES FOR EDUCATION AND AWARENESS

Opportunities for donor recognition	Educational signage throughout the park	Interpretive sites and experiences
Community events and gatherings on site	Signage to enforce park rules and discourage misuse	Ranger-hosted field trips and kid-friendly events
Online updates about the beach	Design features showing historical railroad	Other



OPPORTUNITIES FOR OUTDOOR EXPERIENCES

2-mile hiking loop trail around the entire site	Connections to regional biking and walking trails	Paved formal parking lot at top of bluff
Dog walking amenities	Creation of campground with visitor center	Overlook points with seating
Bike parking	Ability to rent out areas of site for safe group events	Other



Let's hear from you! What opportunities are you most excited about? Respond in the survey at tunitascreekbeach.org!



WHAT ARE YOUR MAIN INTERESTS?



ENVIRONMENTAL PROTECTION

- Erosion control
- Vegetation restoration
- Wildlife habitat protection
- Tunitas Creek protection
- Protection of the beach
- Other



EQUITY AND INCLUSION

- ADA Accessibility
- Outreach
- Diversity
- Safety
- Sense of community
- Signage translations
- Play spaces
- Other



EDUCATION AND AWARENESS

- Donor Recognition
- Historical Education
- Interpretive sites
- Online resources
- Enforcement of park rules
- Field trips
- Signage
- Environmental education
- Other



OUTDOOR EXPERIENCES

- Hiking/walking
- Biking
- Driving/parking
- Dog walking
- Camping
- Overlook points
- Surfing
- Fishing
- Other

Let's hear from you! What are your main interests? Respond in the survey at tunitascreekbeach.org!



END OF PROJECT INTRODUCTION

Click on "Existing Conditions" to move to the next module.

