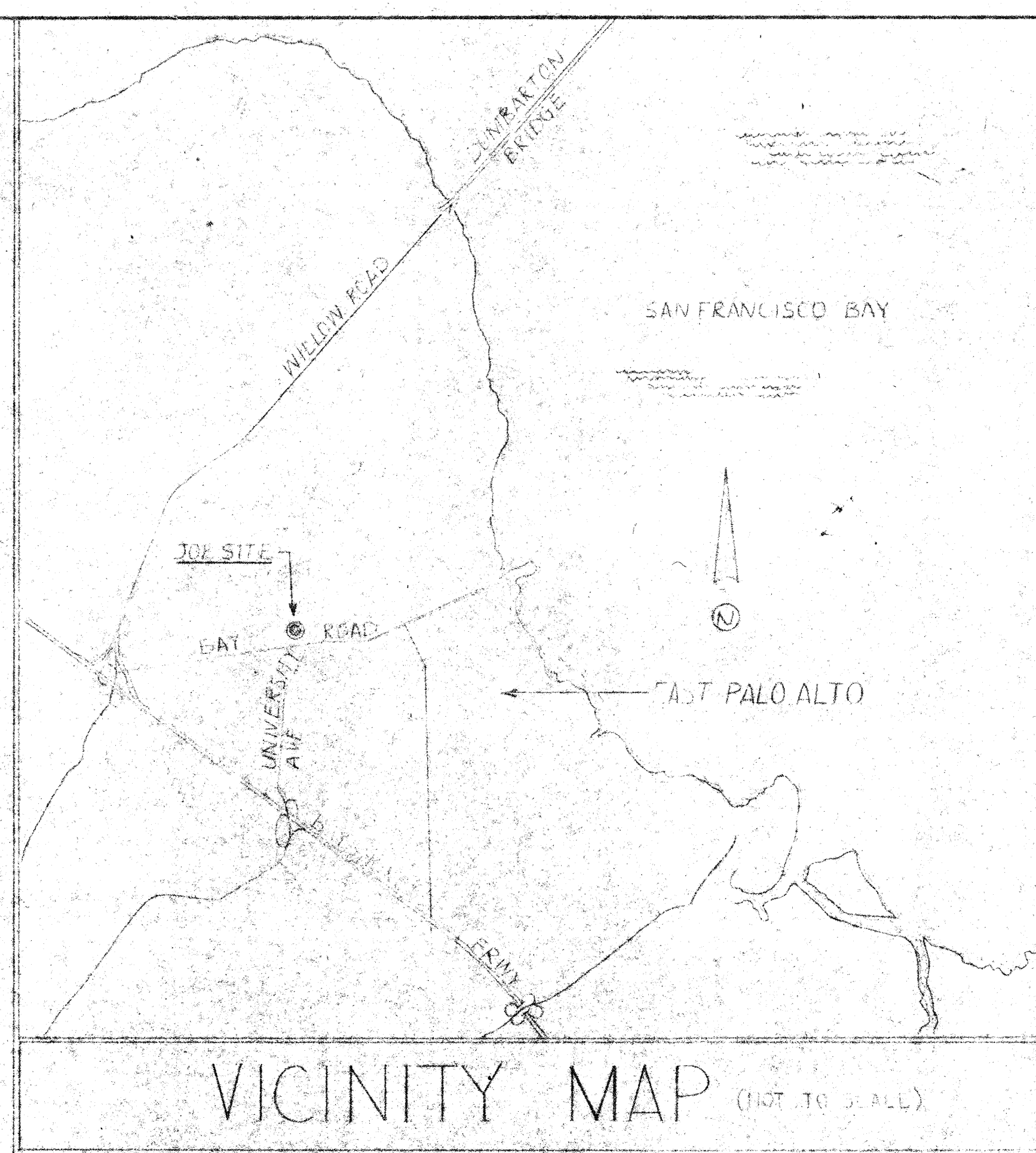
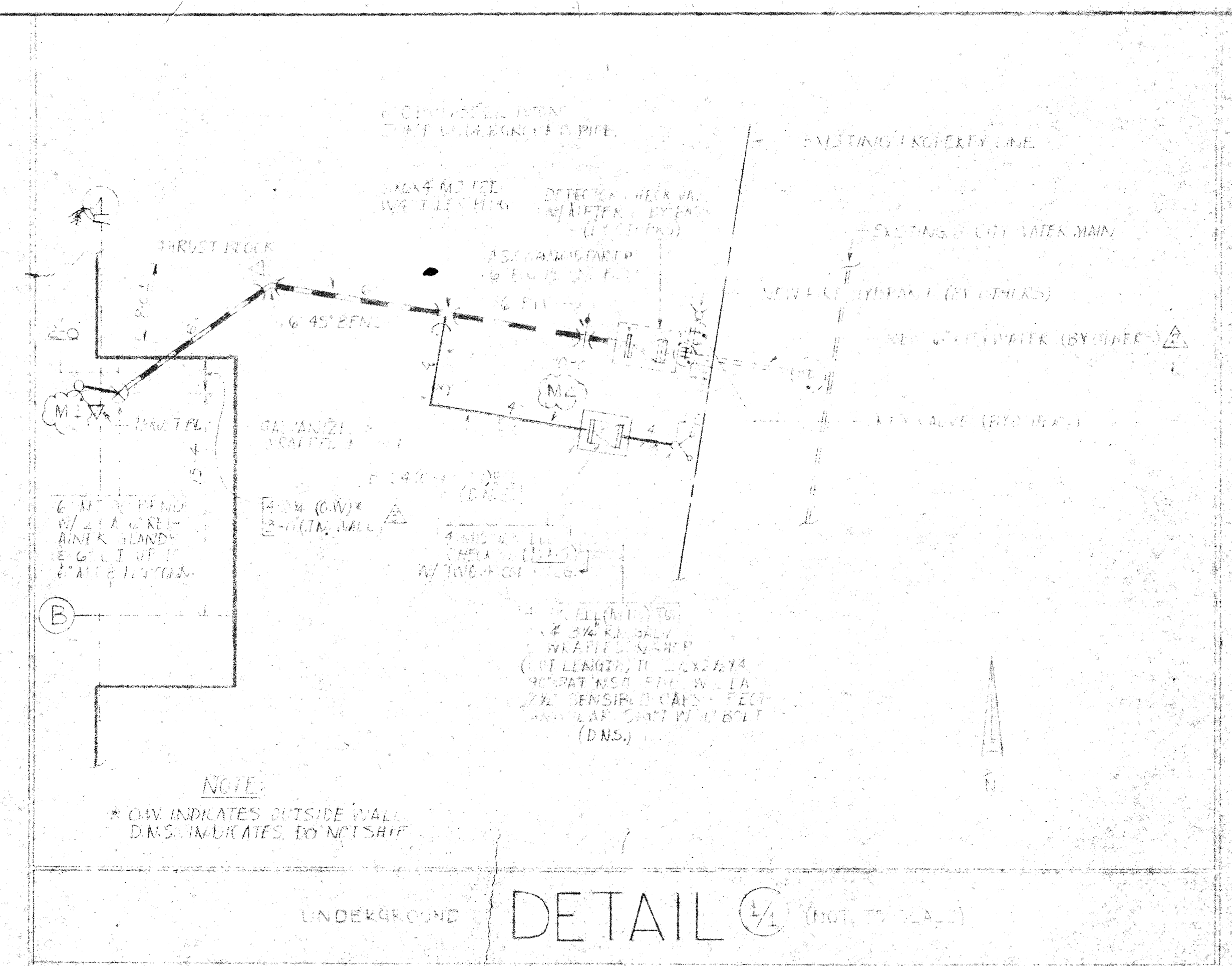


- UNDERGROUND NOTES**
1. 2" MIN BURY ON ALL 6" GALV. IRON UNDERGROUND PIPE.
 2. SLOPE TO 1" MIN BURY ON ALL GALVANIZED PIPE.
 3. ALL FITTINGS TO BE NATIVE SOIL & COMPACTED TO BE 90 PER CENT.
 4. UNDERGROUND IS IN ACCORDANCE WITH N.E.P.A. NO. 24.

PLOT PLAN — UNDERGROUND PIPE
SCALE: 1" = 30'-0"



VICINITY MAP (NOT TO SCALE)



UNDERGROUND DETAIL (NOT TO SCALE)

— DESIGNER TO ORDER —

ITEM NO.	QUAN.	ITEM
<u>SHORT LIST ITEMS</u>		
1	1 EA.	4" X 2" C. FLO. X RE. PIECE
2	1 EA.	6" (WED-MEDY) M.T. POST INDICATOR VALVE W/ACC.
3	1 EA.	(KENNEDY) POST INDICATOR 6" 1/2" 3" C BULKY
4	1 EA.	6" X 6" 4" M.T. TEE W/ACC.
5	1 EA.	4" 1/2" BULKY
6	1 EA.	6" 45° BEND W/ACC.
7	1 EA.	6" 90° BEND W/ACC.
8	1 EA.	B-2.4 (CHRISTY) FIT
9	1 EA.	D-35 (CHRISTY) KEIN. CONC. LID
10	1 EA.	4" MISSING END CHECK VALVE
11	1 EA.	6" M.T. 1/2" COUPLER W/ACC.
12	—	50' 6" X 6" 6" CL. CAS. 22' SPAN JOINT OF DEREGULATED PIPE
<u>SHORT TO ORDER</u>		
1	2 EA.	6" RETAINER GLANDS

— DESIGNER TO ORDER (CONT.) —

ITEM NO.	QUAN.	ITEM
2	4 EA.	3/4" X 3" HEX HEAD BOLT
3	4 EA.	3/4" HEX NUTS
4	2 EA.	6" FLO. GASKET
5	2 EA.	4" FLO. GASKET
6	2 EA.	5/8" X 5/8" ALL THREAD ROD
7	2 EA.	3/8" NUTS
8	1 EA.	4" X 4" 1/2" W/4" 1/2" 90° ELL. GALVAN. 1/2" THICK RISK
9	1 EA.	4" X 4" 1/2" W/4" 1/2" 90° COMMANDER FLO. 90° GALV. 1/2" THICK RISK
10	1 EA.	4" X 2" 1/2" W/4" 1/2" COUPLER FLO. GALV. 1/2" THICK RISK
11	1 EA.	4" X 3" 1/2" 1/2" W/4" 1/2" 90° ELL. GALVAN. 1/2" THICK RISK
12	1 EA.	4" X 2" 1/2" 1/2" W/4" 1/2" MET. E.D.C. W/2" 1/2" 2" SENSIBLE CAPS & TRIANGULAR SHIM W/ D.C.T.

PIPE SCHEDULE	SIZE	TYPE	WALL THICKNESS	WATER TIGHTNESS	TEST PRESSURE	MIN. BURY	MAX. DEPTH	MIN. COVER	MIN. BURIAL	MIN. COVER	MIN. BURIAL

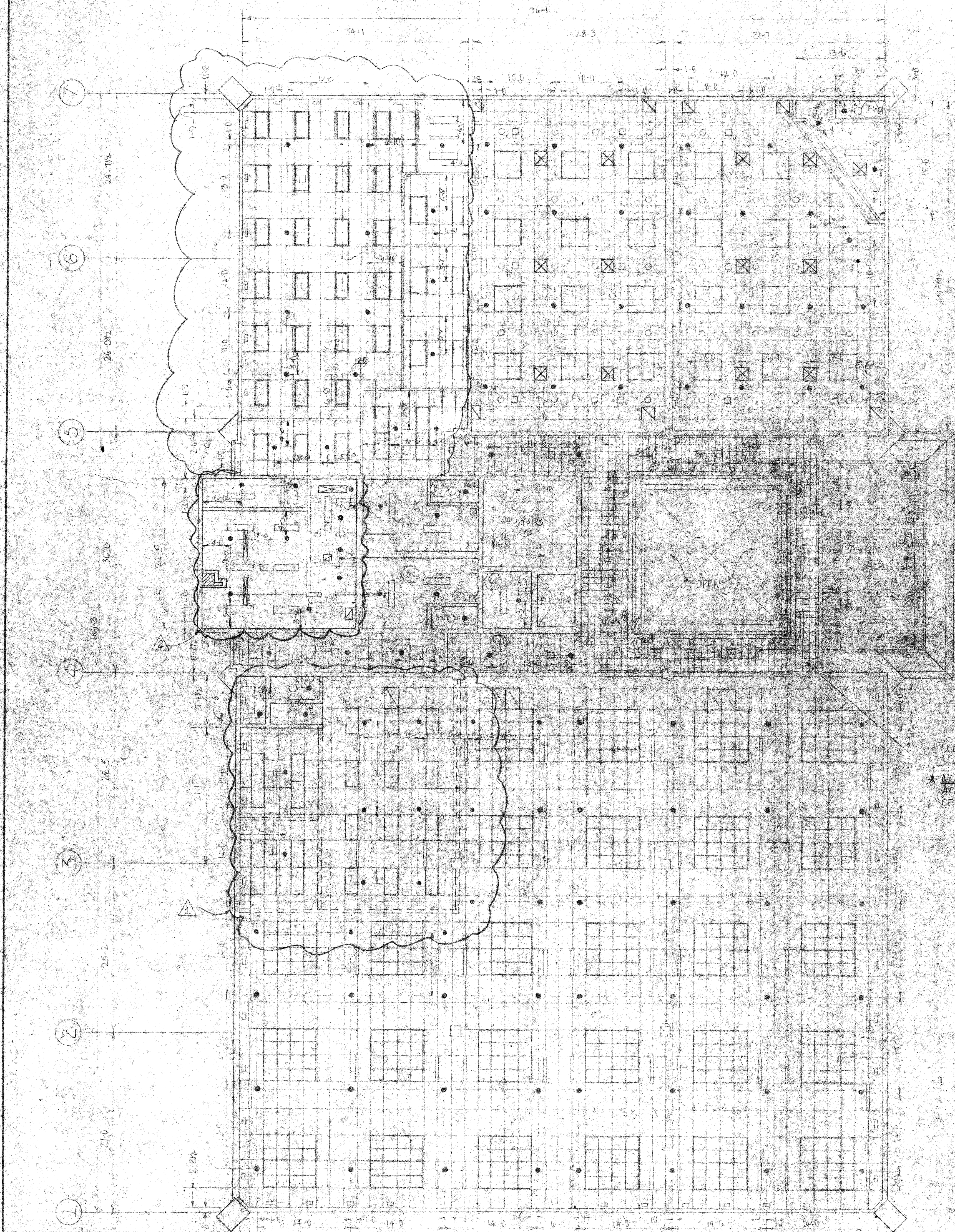
DATE	BY	DESCRIPTION	DATE	BY	DESCRIPTION	DATE	BY	DESCRIPTION	DATE	BY	DESCRIPTION



As Built



APPROVED BY	DATE	SURVEYED BY	DATE	TITLE	NO. OF SPRINKLERS SHOWN ON THIS SHEET
DRAWN BY	DATE	CHECKED BY	DATE	OFFICE	NO. OF SPRINKLERS ON JOB
SCALE	AS NOTED	SHEET NO.	1 OF 2	CONTRACT NO.	



REFLECTED CEILING PLAN
FIRST FLOOR - LEGEND

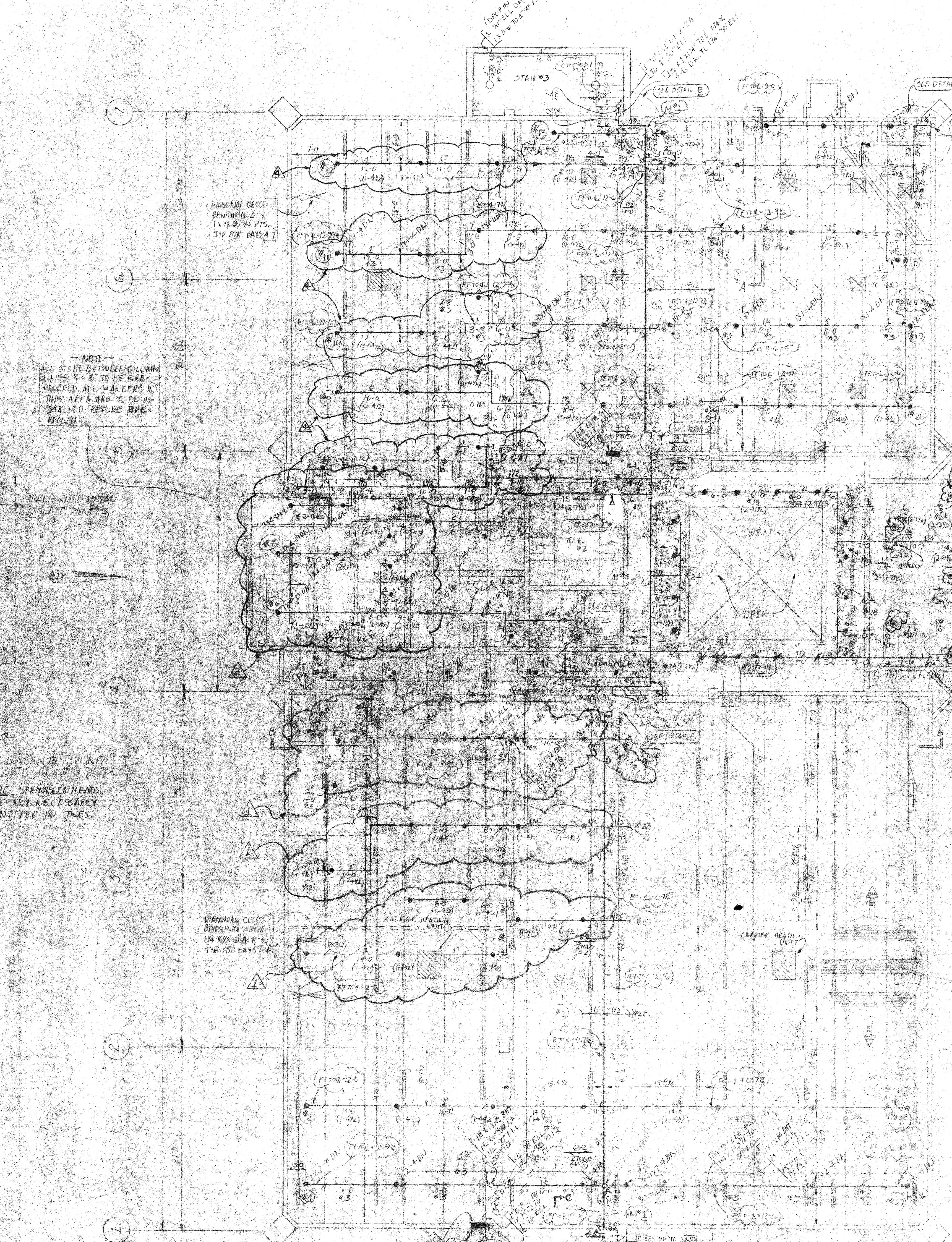
1. ALL SUSPENDED CEILING HEIGHTS TO BE 12'-0" UNLESS OTHERWISE NOTED BY "DENOTE" AND R.O. CEILING HEIGHT - E.T.S.

2. "E" EQUALS 16 GA. STEEL

3. "S" EQUALS 1/2" DIA. STEEL

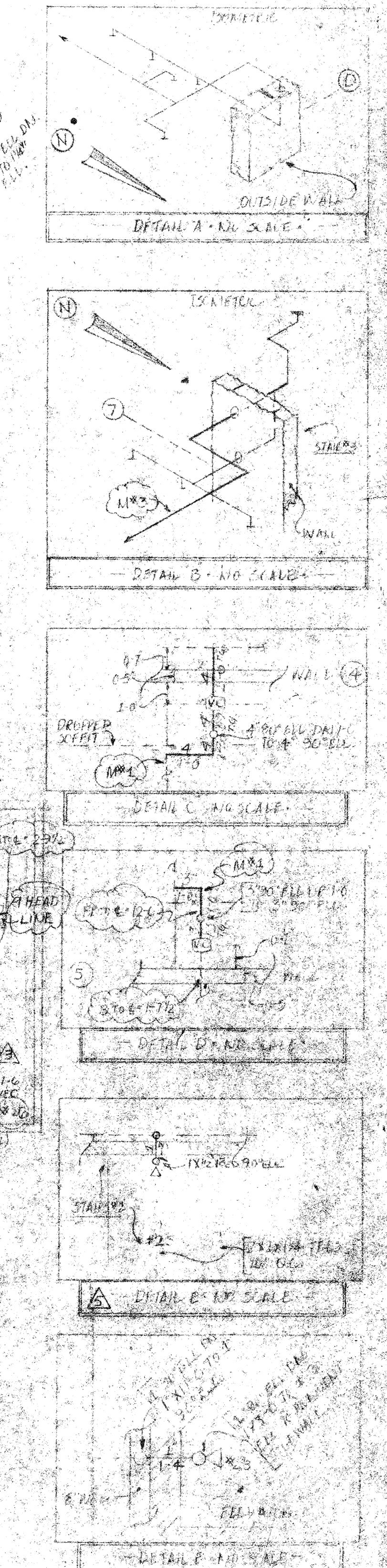
PIPE SCHEDULE	BEAM/CEILING	BRANCH	BEAM/CEILING	BEAM/CEILING	BEAM/CEILING	BEAM/CEILING	BEAM/CEILING	BEAM/CEILING	BEAM/CEILING	BEAM/CEILING	BEAM/CEILING	BEAM/CEILING	BEAM/CEILING	BEAM/CEILING	BEAM/CEILING	BEAM/CEILING	BEAM/CEILING	BEAM/CEILING	BEAM/CEILING	BEAM/CEILING	

COLOR CODE
WHITE



FIRST FLOOR
REFLECTED CEILING & PIPING PLANS

- 10 STAC SPRINKLERS 1/2" OR LARGER
- 5 BRASS & BRONZE 1/2" OR LARGER
- 122 1/2" PEX PIPING
- 1 BRASS PLUMBING 1/2" OR LARGER
- 1 BRASS PLUMBING 1/2" OR LARGER
- 1 AUTOMATIC A.G. FLUSH 1/2" OR LARGER

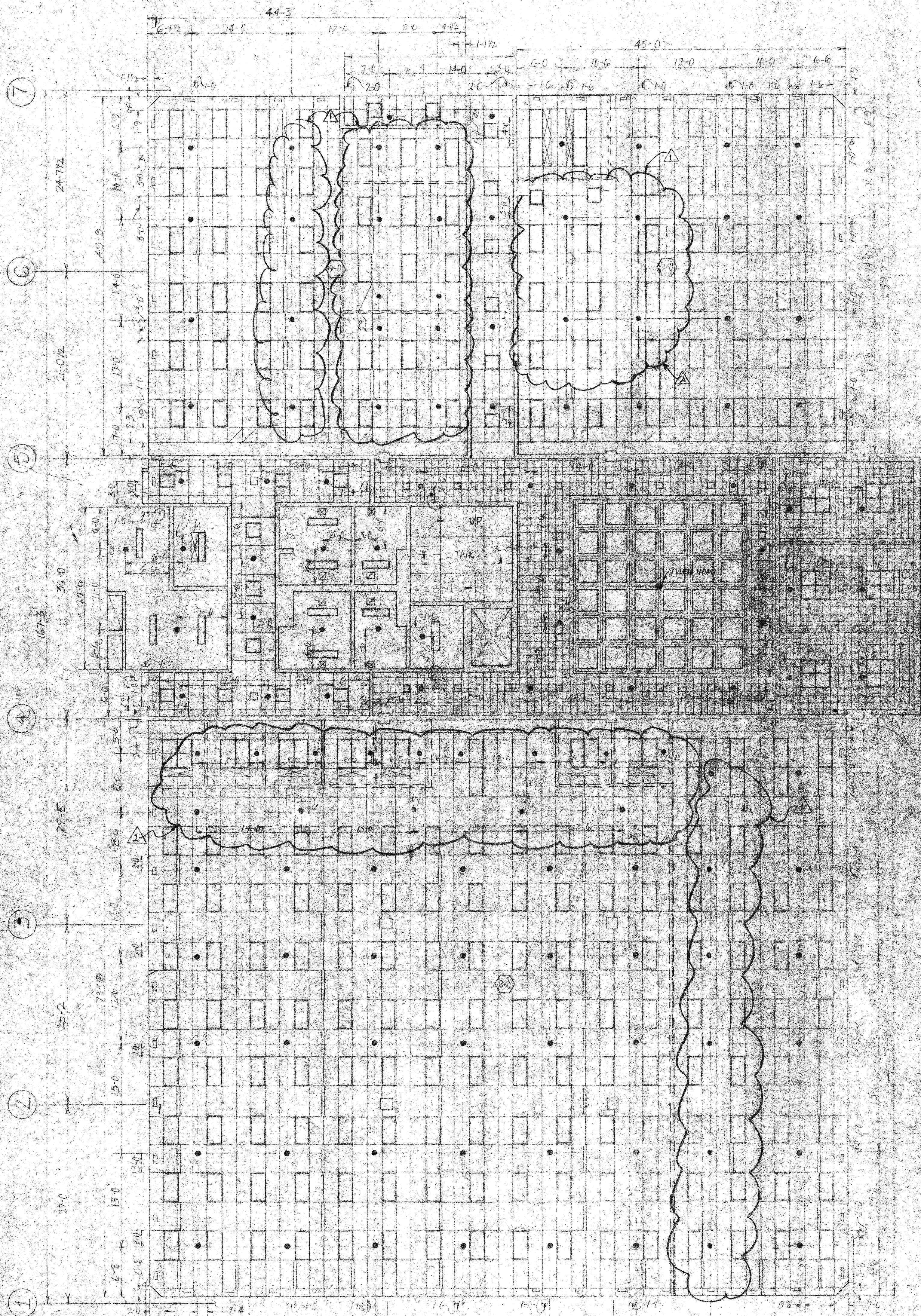


APPROVED BY	DATE	SURVEYED BY	DATE	TITLE
REV. PER ARCHITECT	7/1/78	JANUARY	5/12/78	SAY EN'S ENGINEERING SERVICES BUILDING 2416 UNIVERSITY AVENUE EAST PALM BEACH, CALIFORNIA SAN MATHEW COUNTY
REV. PER ARCHITECT	7/1/78	JANUARY	5/12/78	
REV. PER ARCHITECT	7/1/78	JANUARY	5/12/78	SCALE: 1/4" = 1'-0" SHEET NO. 2 OF 5
REV. PER ARCHITECT	7/1/78	JANUARY	5/12/78	

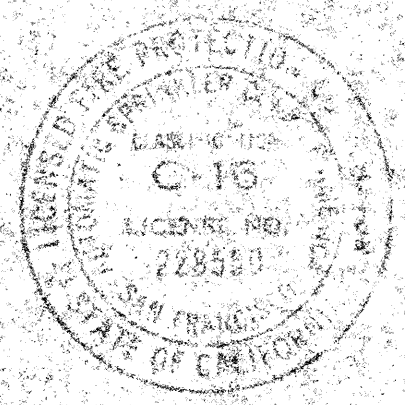
Automatic Sprinkler
CORPORATION OF AMERICA

A DIVISION OF AMERICAN LA PRANCE INC., SUBSIDIARY OF A.T.O. INC.

As Built



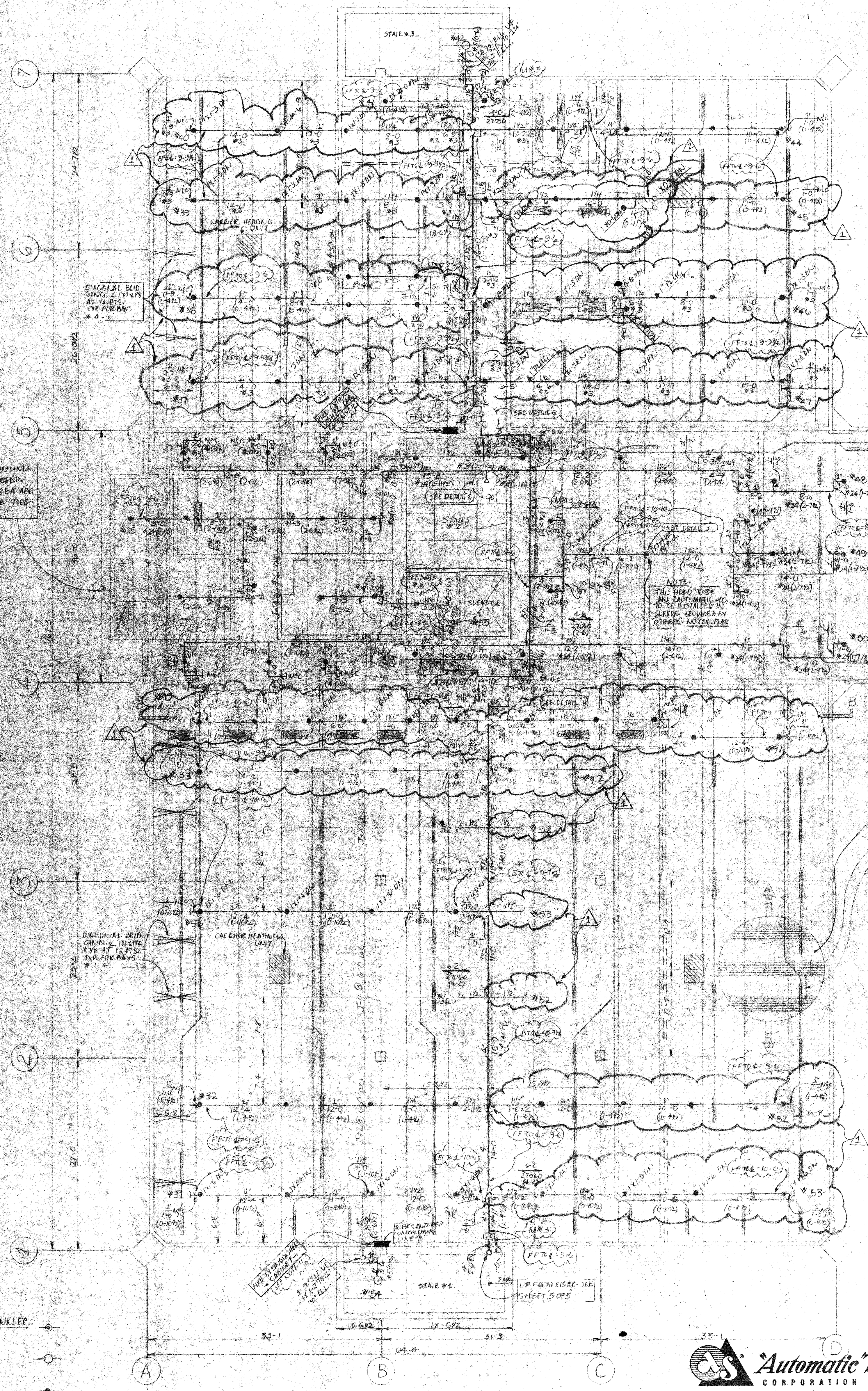
NOTE
 ALL SPACES BETWEEN CONVENTIONAL
 WES 15 TO BE FIVE FOOTERS.
 ALL HANGERS IN THIS AREA ARE
 TO BE INSTALLED BEFORE FIVE
 FOOTERS.



— SECOND FLOOR —
 REFLECTED CEILING & PIPING PLANS.

- 1 AUTOMATIC 400 CEILING SPRINKLER
1/2" DRIFTE
- 2 BRASS UPRIGHT
1/2" DRIFTE
- 3 CHROME PENDANT
1/2" DRIFTE

COLOR CODE
 — SILVER —



STANDARD ELECTRIFIED 1/2" PIPE
 SYSTEM WATERING CELLULAR
 AND NON CELLULAR UNITS.
 CELLULAR UNITS 2-0 TYP.
 NON CELLULAR UNITS 3-0 TYP.

- GENERAL NOTES
1. ALL DEPENDS TO BE INSTALLED TO BE 1-1/2" IN 1/2" EX. UNLESS OTHERWISE NOTED.
 2. ALL AREAS A PENDANT HEAD OR A DOWN HEAD ARE TO HAVE A 1/2" DRIFTE UNLESS OTHERWISE NOTED. SEE SHEET 5 OF 5 FOR ALL HANGER DETAILS.
 3. SEE SHEET 5 OF 5 FOR RISER DETAIL.
 4. FOREMAN NOTE: AUXILIARY DRIFTE TO BE EXTENDED TO HELP WITH IN JARIFES ROOM #202.
 5. SEE SHEET 5 OF 5 FOR SECTION B-D.
 6. FF TO 6 MEANS FINISHED FLOOR TO CENTERLINE OF PIPE.
 7. D TO 6 MEANS BOTTOM OF HEAD TO CENTERLINE OF PIPE.
 8. SEE SHEET 5 OF 5 FOR ALL DISHWASHER TO FLOOR MATERIAL & SCHEDULE TO COVER MATERIAL.
 9. ALL 1/2" HANGERS ARE TO BE STANDARD LENGTH.
 10. SEE SHEET 5 OF 5 FOR ALL FIVE BATHROOM CABINET PLACEMENTS.

REFLECTED CEILING PLAN
 SECOND FLOOR LEGEND

1 ALL SUSPENDED CEILING HEIGHTS TO BE 8'-0" UNLESS OTHERWISE NOTED. DENOTES A 3'-0" CEILING HEIGHT.

PIPE SCHEDULE	BLANK LIST	MAINS
2	BLANK LIST	BLANK LIST
3	BLANK LIST	BLANK LIST
4	BLANK LIST	BLANK LIST
5	BLANK LIST	BLANK LIST
6	BLANK LIST	BLANK LIST
7	BLANK LIST	BLANK LIST
8	BLANK LIST	BLANK LIST
9	BLANK LIST	BLANK LIST
10	BLANK LIST	BLANK LIST
11	BLANK LIST	BLANK LIST
12	BLANK LIST	BLANK LIST
13	BLANK LIST	BLANK LIST
14	BLANK LIST	BLANK LIST
15	BLANK LIST	BLANK LIST
16	BLANK LIST	BLANK LIST
17	BLANK LIST	BLANK LIST
18	BLANK LIST	BLANK LIST
19	BLANK LIST	BLANK LIST
20	BLANK LIST	BLANK LIST
21	BLANK LIST	BLANK LIST
22	BLANK LIST	BLANK LIST
23	BLANK LIST	BLANK LIST
24	BLANK LIST	BLANK LIST
25	BLANK LIST	BLANK LIST
26	BLANK LIST	BLANK LIST
27	BLANK LIST	BLANK LIST
28	BLANK LIST	BLANK LIST
29	BLANK LIST	BLANK LIST
30	BLANK LIST	BLANK LIST

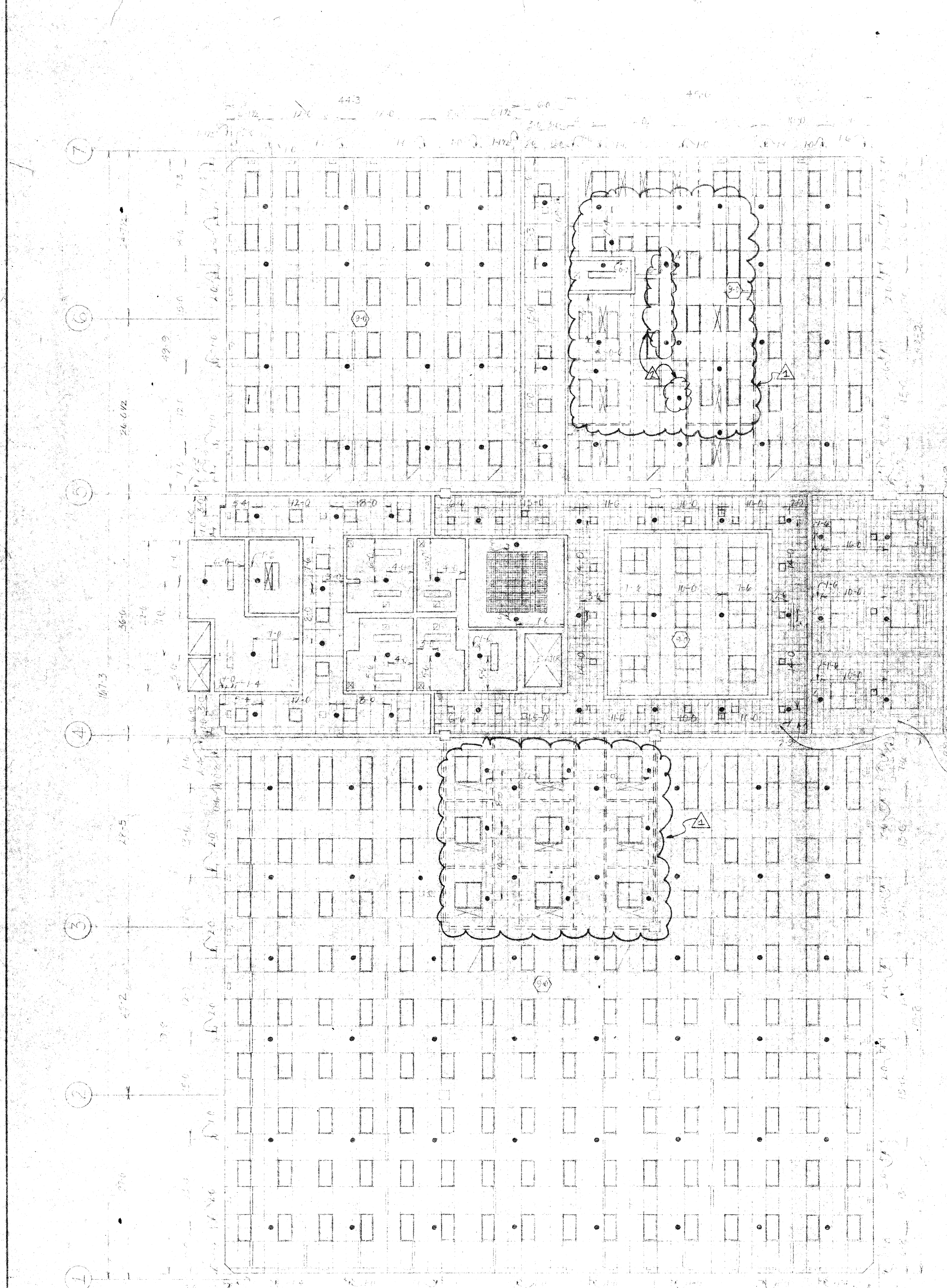
REVISIONS	DATE	APPROVED BY	DATE	SURVEYED BY	DATE	TITLE
1	6/23/74	REV PER ARCHITECT	6/23/74	REV PER ARCHITECT	6/23/74	133
2	6/23/74	REV PER ARCHITECT	6/23/74	REV PER ARCHITECT	6/23/74	133
3	6/23/74	REV PER ARCHITECT	6/23/74	REV PER ARCHITECT	6/23/74	133
4	6/23/74	REV PER ARCHITECT	6/23/74	REV PER ARCHITECT	6/23/74	133
5	6/23/74	REV PER ARCHITECT	6/23/74	REV PER ARCHITECT	6/23/74	133
6	6/23/74	REV PER ARCHITECT	6/23/74	REV PER ARCHITECT	6/23/74	133
7	6/23/74	REV PER ARCHITECT	6/23/74	REV PER ARCHITECT	6/23/74	133
8	6/23/74	REV PER ARCHITECT	6/23/74	REV PER ARCHITECT	6/23/74	133
9	6/23/74	REV PER ARCHITECT	6/23/74	REV PER ARCHITECT	6/23/74	133
10	6/23/74	REV PER ARCHITECT	6/23/74	REV PER ARCHITECT	6/23/74	133
11	6/23/74	REV PER ARCHITECT	6/23/74	REV PER ARCHITECT	6/23/74	133
12	6/23/74	REV PER ARCHITECT	6/23/74	REV PER ARCHITECT	6/23/74	133
13	6/23/74	REV PER ARCHITECT	6/23/74	REV PER ARCHITECT	6/23/74	133
14	6/23/74	REV PER ARCHITECT	6/23/74	REV PER ARCHITECT	6/23/74	133
15	6/23/74	REV PER ARCHITECT	6/23/74	REV PER ARCHITECT	6/23/74	133
16	6/23/74	REV PER ARCHITECT	6/23/74	REV PER ARCHITECT	6/23/74	133
17	6/23/74	REV PER ARCHITECT	6/23/74	REV PER ARCHITECT	6/23/74	133
18	6/23/74	REV PER ARCHITECT	6/23/74	REV PER ARCHITECT	6/23/74	133
19	6/23/74	REV PER ARCHITECT	6/23/74	REV PER ARCHITECT	6/23/74	133
20	6/23/74	REV PER ARCHITECT	6/23/74	REV PER ARCHITECT	6/23/74	133
21	6/23/74	REV PER ARCHITECT	6/23/74	REV PER ARCHITECT	6/23/74	133
22	6/23/74	REV PER ARCHITECT	6/23/74	REV PER ARCHITECT	6/23/74	133
23	6/23/74	REV PER ARCHITECT	6/23/74	REV PER ARCHITECT	6/23/74	133
24	6/23/74	REV PER ARCHITECT	6/23/74	REV PER ARCHITECT	6/23/74	133
25	6/23/74	REV PER ARCHITECT	6/23/74	REV PER ARCHITECT	6/23/74	133
26	6/23/74	REV PER ARCHITECT	6/23/74	REV PER ARCHITECT	6/23/74	133
27	6/23/74	REV PER ARCHITECT	6/23/74	REV PER ARCHITECT	6/23/74	133
28	6/23/74	REV PER ARCHITECT	6/23/74	REV PER ARCHITECT	6/23/74	133
29	6/23/74	REV PER ARCHITECT	6/23/74	REV PER ARCHITECT	6/23/74	133
30	6/23/74	REV PER ARCHITECT	6/23/74	REV PER ARCHITECT	6/23/74	133

Automatic Sprinkler
 CORPORATION OF AMERICA ORIGINAL LIST
 A DIVISION OF AMERICAN LAFRANCE INC., SUBSIDIARY OF A-T-O INC.

SAN MATEO COUNTY SERVICES BUILDING
 2415 UNIVERSITY AVENUE
 EAST PALO ALTO CALIFORNIA
 SAN MATEO COUNTY

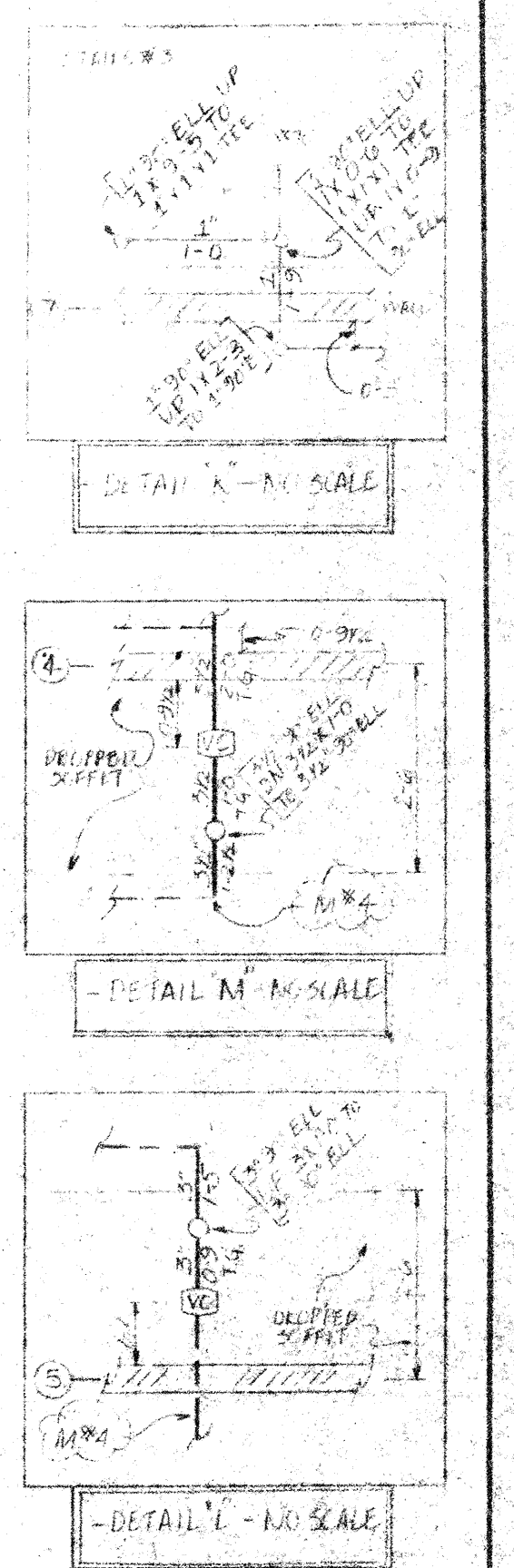
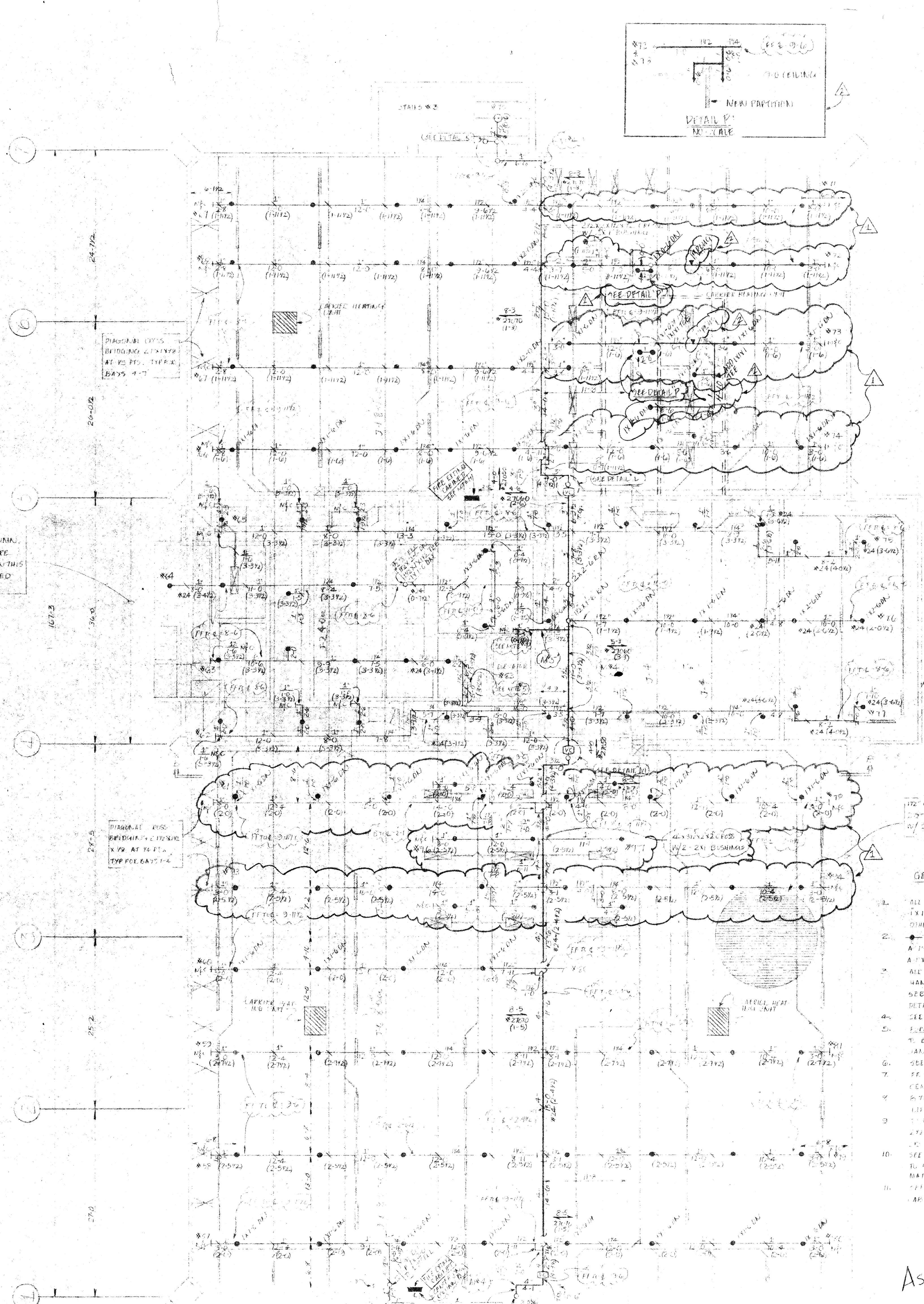
NO. OF SPRINKLERS 133
 CONTRACT NO. 65-876

As Built



NOTE
ALL STEEL BETWEEN COLUMN LINES 4 & 5 IS TO BE FIRE VERIFIED. ALL HANGERS IN THIS AREA ARE TO BE INSTALLED BEFORE FIREPROOFING.

ALL EXPOSED STEEL TO BE FIRE PROTECTED WITH 1 1/2" MIN. VERMICULITE FILL



GENERAL NOTES:

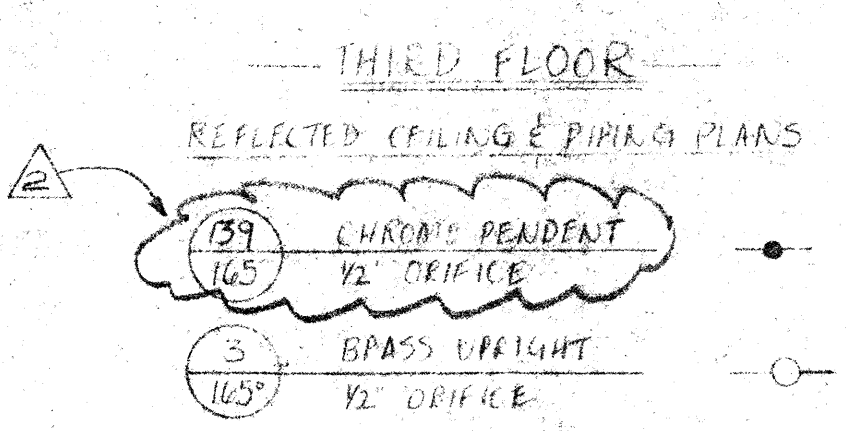
1. ALL DIMS TO SPRINKLER HEADS BE TAKEN FROM FACE OF WALLS UNLESS NOTED OTHERWISE.
2. HEADS A THROUGH H ARE ON A 1" PIPE. ALL DIMS ARE TO FACE A 1" PIPE UNLESS NOTED OTHERWISE.
3. ALL HANGERS ARE TO BE #3 BARS HANGERS UNLESS OTHERWISE NOTED. SEE SHEET 3 OF 5 FOR ALL HANGER DETAILS AND HANGER TO BE DETAIL L.
4. EXHAUST FANS, EXHAUST FANS TO BE EXPANDED TO 24" DIA. IN BRANCHES TO 24" DIA. (SEE SHEET 3 OF 5).
5. SEE SHEET 3 OF 5 FOR ALL DESIGNER TO FURNISH & VERIFY TO GENERAL CONTRACTOR.
6. SEE SHEET 3 OF 5 FOR ALL DESIGNER TO FURNISH & VERIFY TO GENERAL CONTRACTOR.
7. SEE SHEET 3 OF 5 FOR ALL DESIGNER TO FURNISH & VERIFY TO GENERAL CONTRACTOR.
8. SEE SHEET 3 OF 5 FOR ALL DESIGNER TO FURNISH & VERIFY TO GENERAL CONTRACTOR.
9. SEE SHEET 3 OF 5 FOR ALL DESIGNER TO FURNISH & VERIFY TO GENERAL CONTRACTOR.
10. SEE SHEET 3 OF 5 FOR ALL DESIGNER TO FURNISH & VERIFY TO GENERAL CONTRACTOR.
11. SEE SHEET 3 OF 5 FOR ALL DESIGNER TO FURNISH & VERIFY TO GENERAL CONTRACTOR.

REFLECTED CEILING PLAN - THIRD FLOOR LEVEL

1. ALL SUSPENDED BRINGS HEIGHTS TO BE 6' UNLESS OTHERWISE NOTED. IDENTIFY A 3" DRAINING HEIGHT.

PIPE SCHEDULE	REMARKS	MARK	DATE
1	1/2" SCH 40		
2	1/2" SCH 40		
3	1/2" SCH 40		
4	1/2" SCH 40		
5	1/2" SCH 40		

COLOR CODE
- YELLOW -



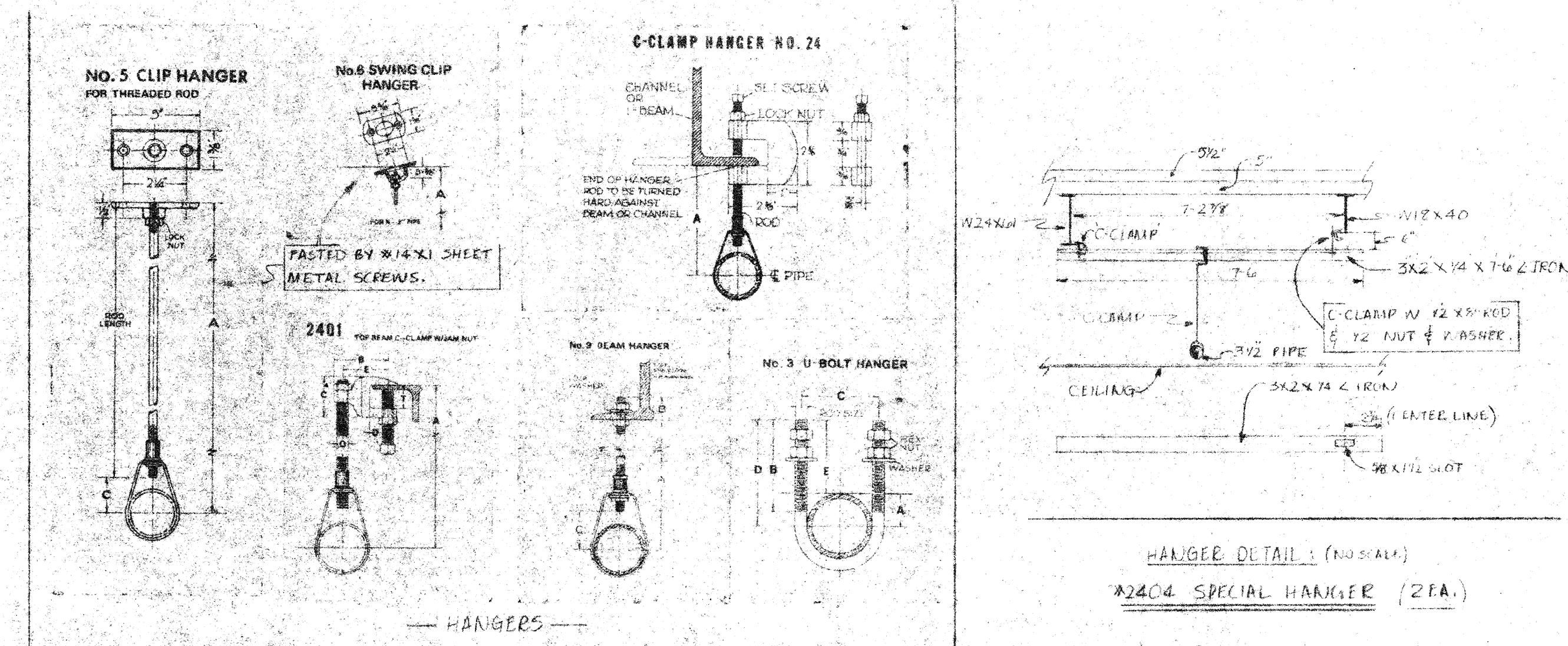
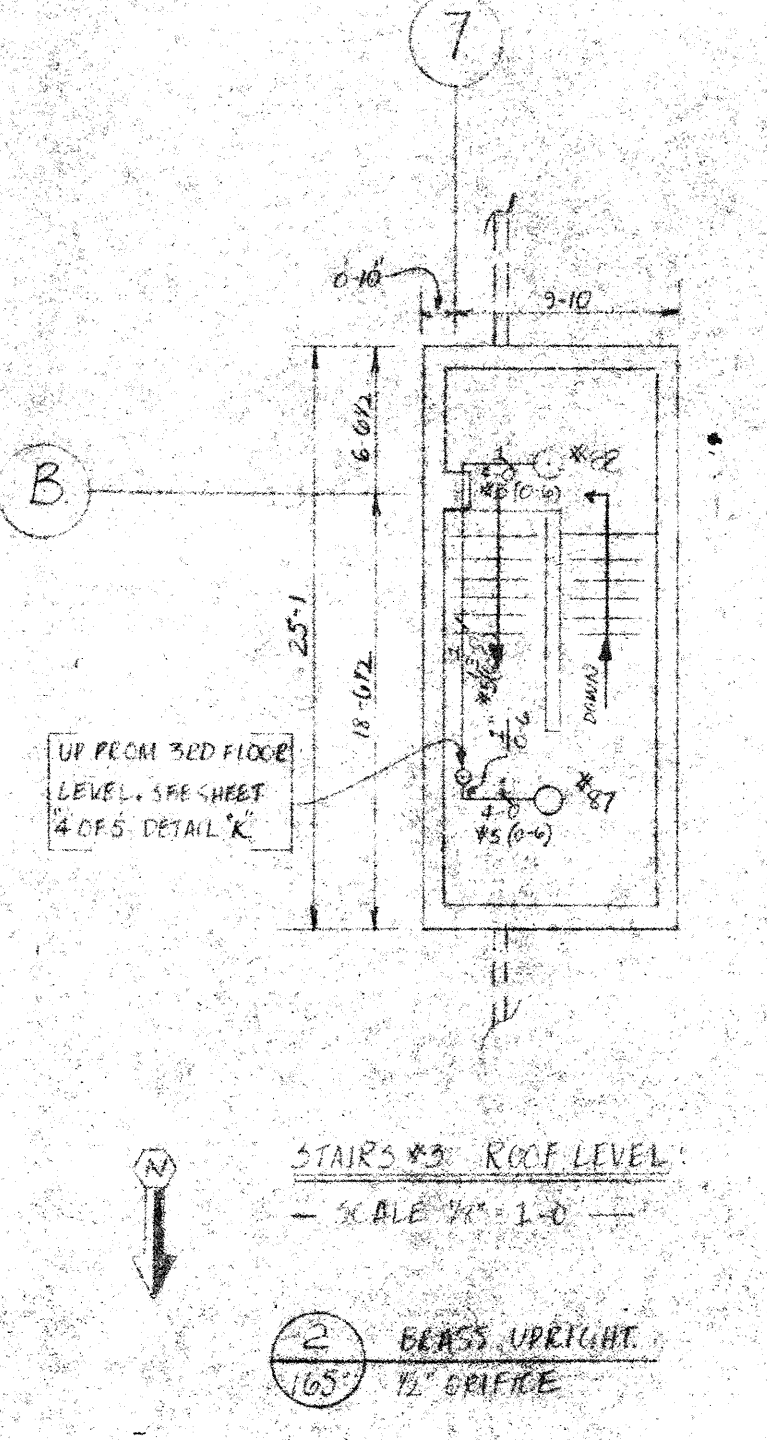
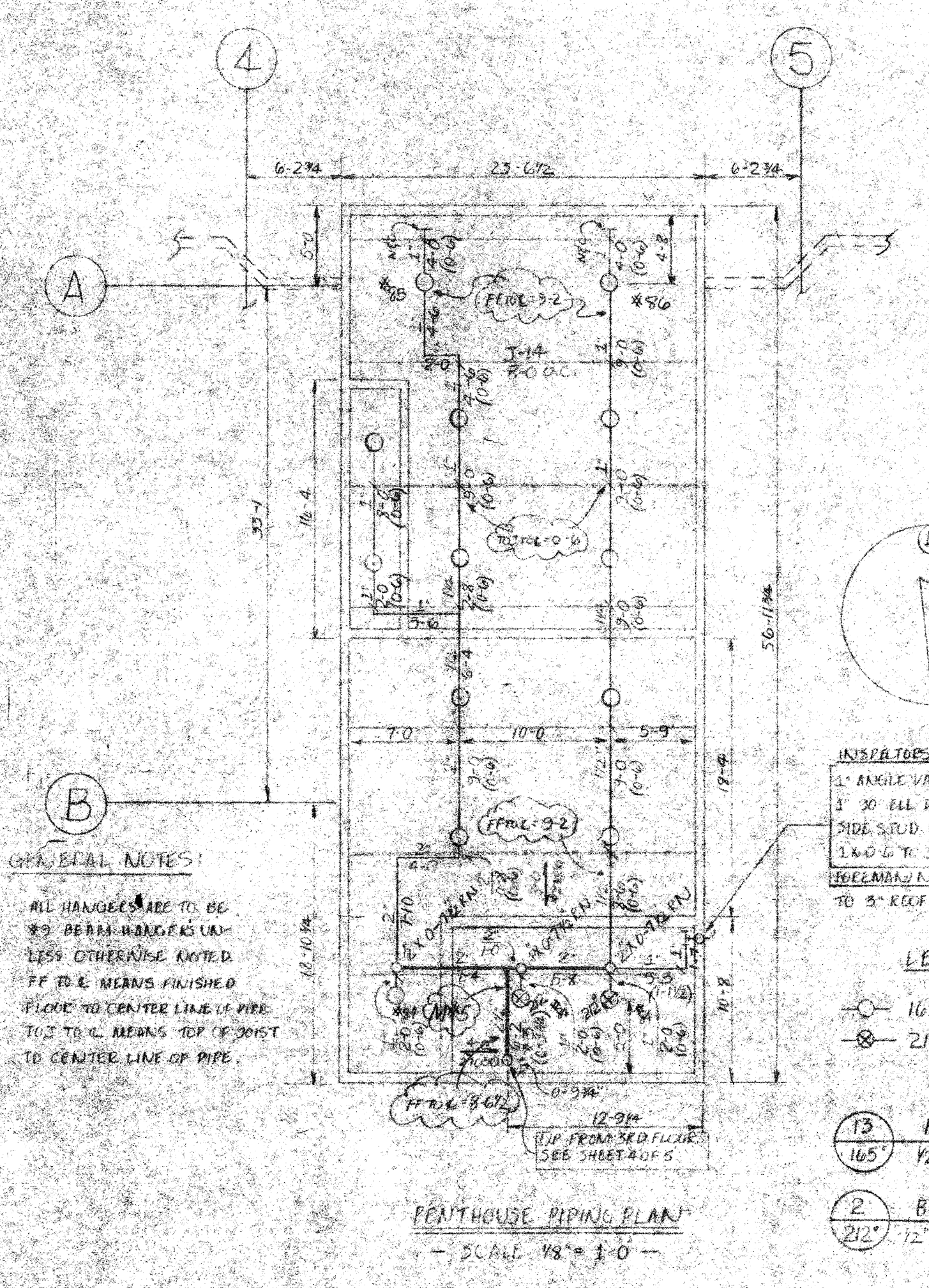
THIRD FLOOR
REFLECTED CEILING & PIPING PLANS
(CALL BY JOIST CONSTRUCTION LIGHT HAZARD, 200 SQ FT SPRINKLER SPACING)

NO.	REVISIONS	DATE	APPROVED BY	DATE	SURVEYED BY	DATE	TITLE
1	REV PER ARCHITECT	7/1/74	INSURANCE SERVICES	7/1/74	DRAWN BY	7/1/74	SAFETY MATERIALS DIVISION
2	REV PER ARCHITECT	7/1/74	INSURANCE SERVICES	7/1/74	CHECKED BY	7/1/74	SAFETY MATERIALS DIVISION
3	DELIVER RECORD	7/1/74	INSURANCE SERVICES	7/1/74	AT	7/1/74	SAFETY MATERIALS DIVISION
4	AS BUILT	4/23/75	INSURANCE SERVICES	4/23/75	SCALE	1" = 10'	SAFETY MATERIALS DIVISION

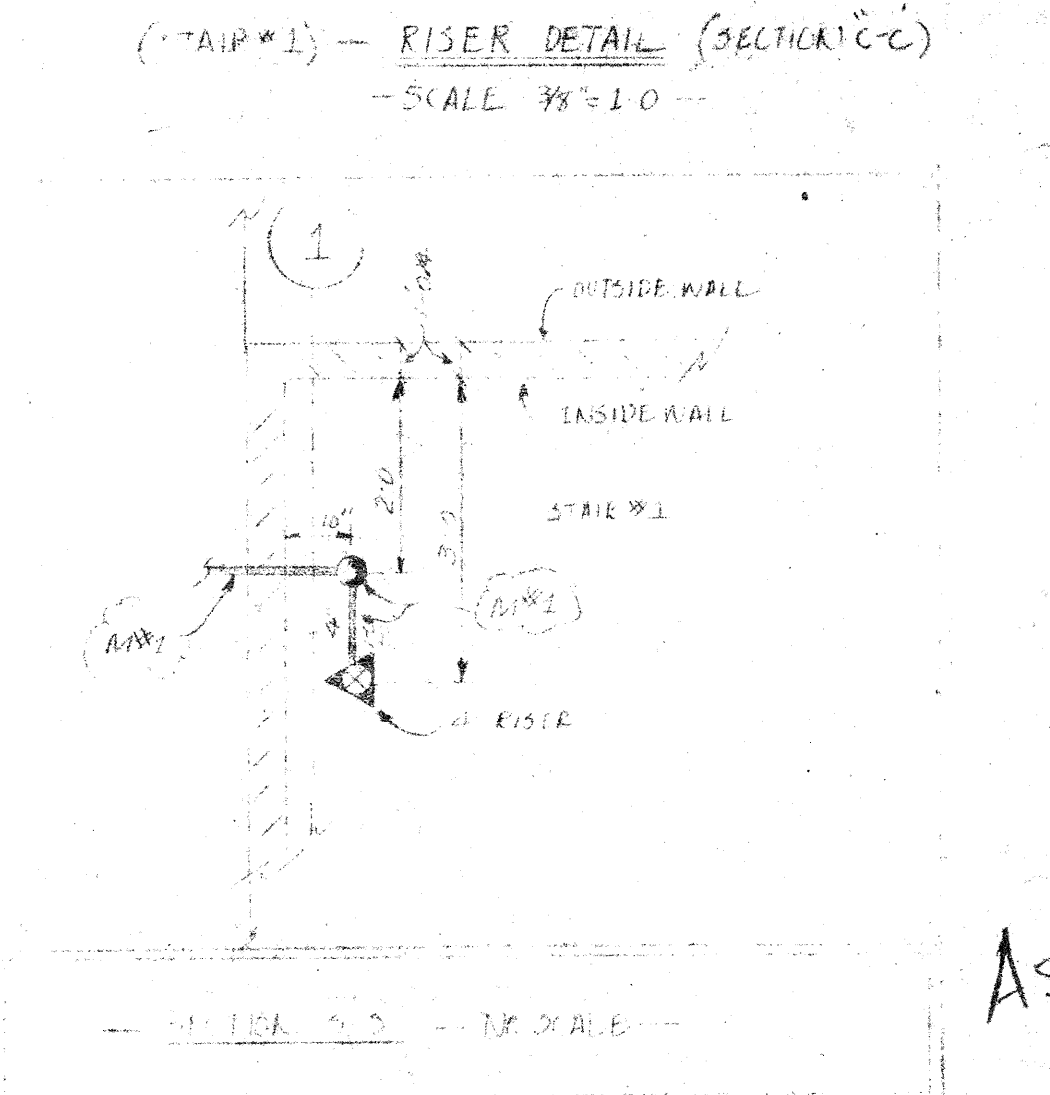
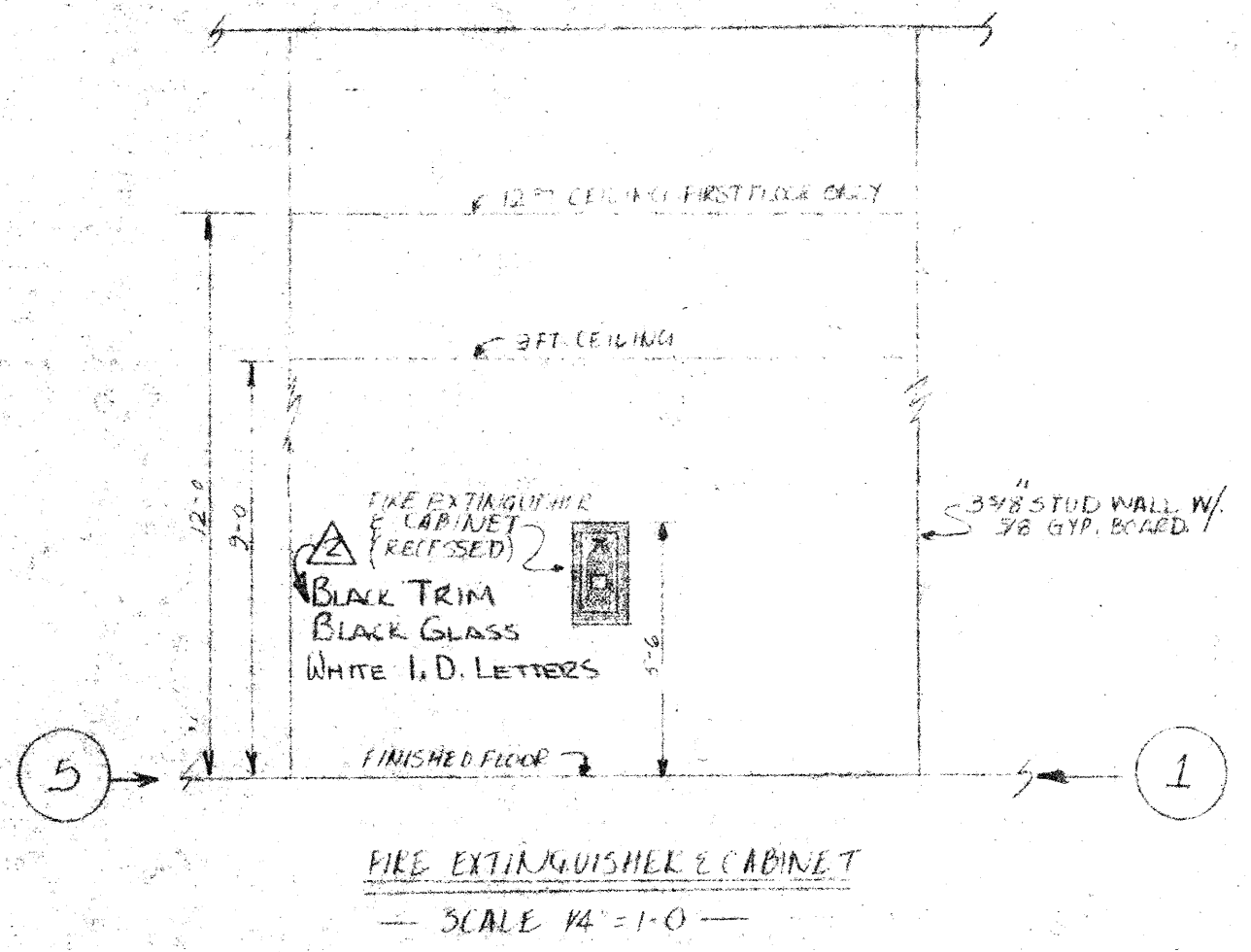
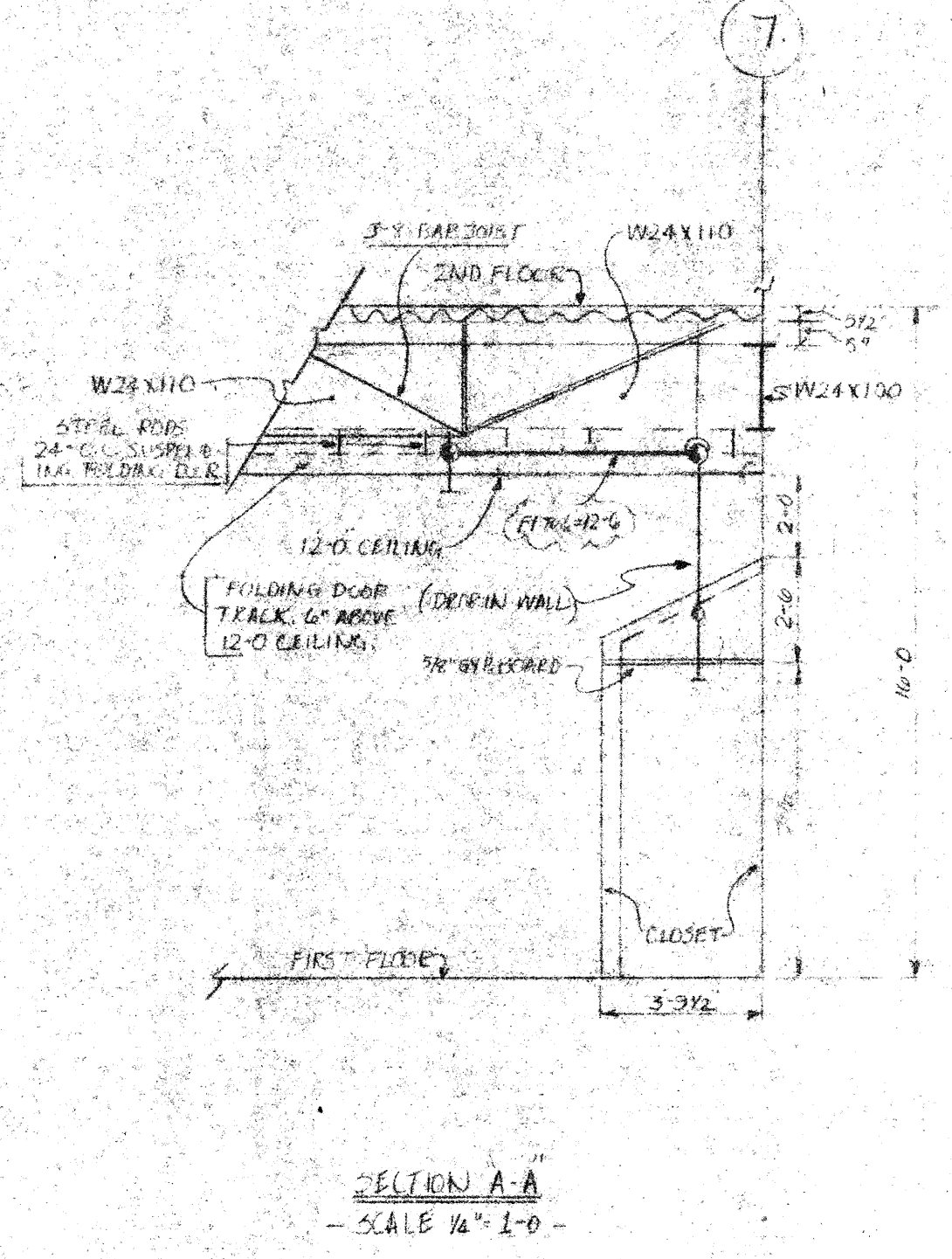
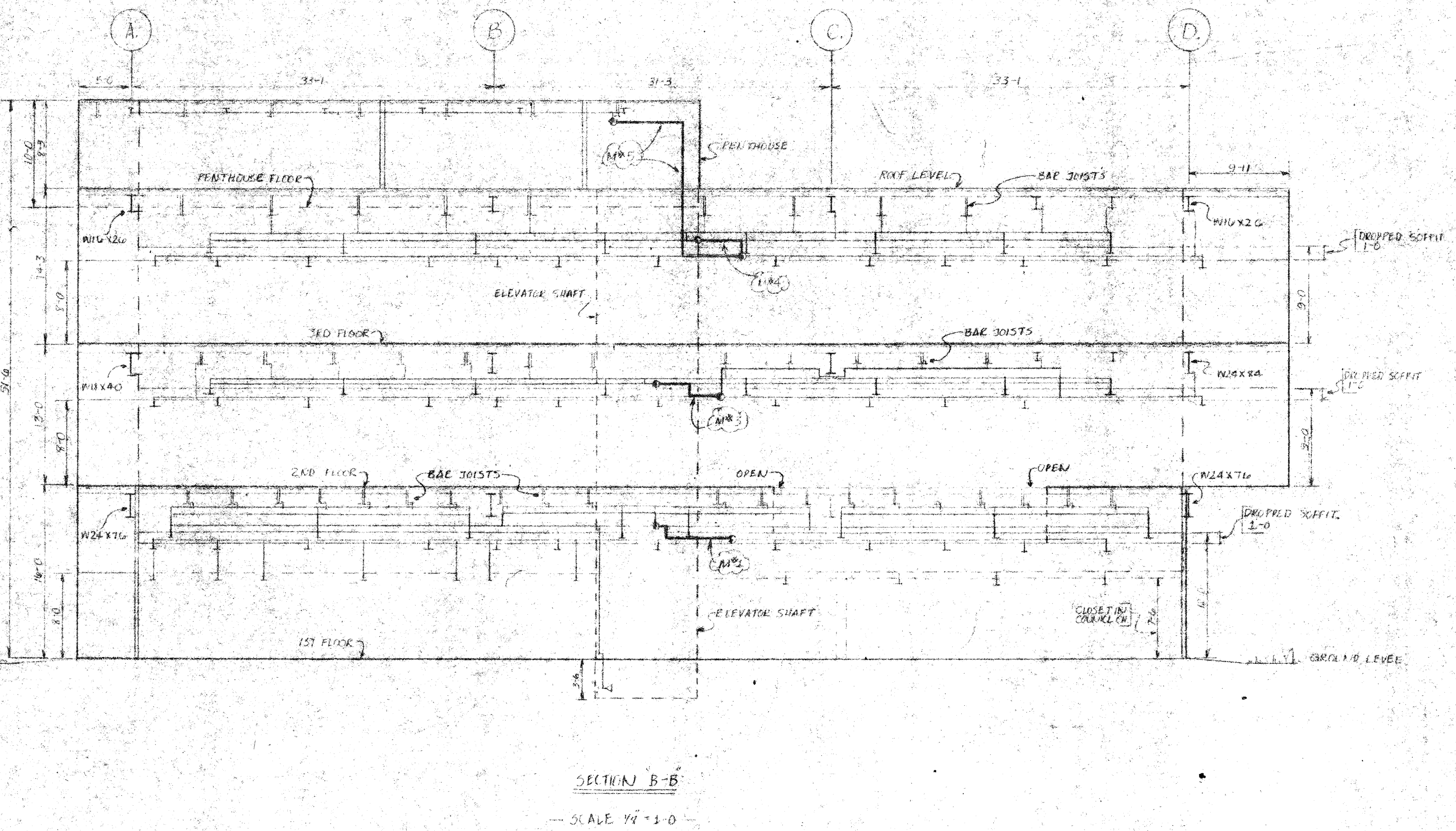
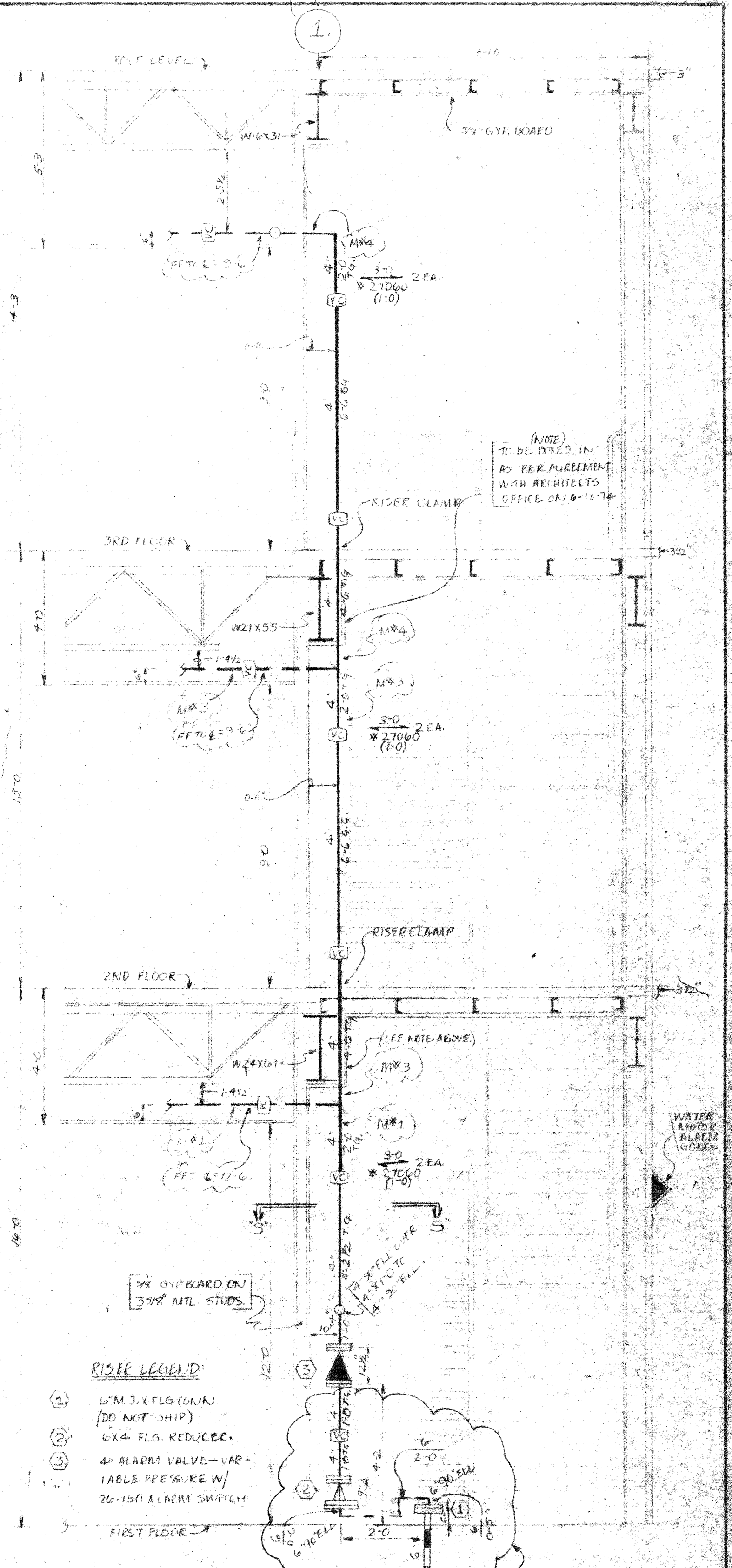
Automatic Sprinkler
CORPORATION OF AMERICA
A DIVISION OF AMERICAN LATHRONE INC., SUBSIDIARY OF A-T-O INC.

As Built
ORIGINAL LIST

NO. OF SPRINKLERS SHOWN ON THIS SHEET: 152
NO. OF SPRINKLERS ON THIS PROJECT: 446
CONTRACT NO. 44-011



- DESIGNER TO ORDER
- 400 EA. 3/8" SHEET & DOWNSON EGG SHELL WHITE PSCUTCHON PLATES
 - 1 EA. MARY TORGANZA FIRE EXTINGUISHER - QUOTE FROM ENGINEERED FIRE EQUIPMENT CO.
 - 1 EA. MARY TORGANZA FIRE EXTINGUISHER CABINETS W/ FULL GLASS DOOR HANDLE DOOR IN BLACK ACRYLIC TRIM - QUOTE FROM ENGINEERED FIRE EQUIP. CO.
 - 1 EA. CITY BUSINESS LICENSE.
 - 1 EA. BUILDING PERMIT & PLAN CHECK FEE.
 - 1 EA. FOR 1" PIPE.
 - 1 EA. FOR 1 1/2" PIPE.
 - 1 EA. FOR 1 1/2" PIPE.
 - 1 EA. FOR 1 1/2" PIPE.
 - 1 EA. FOR 1 1/2" PIPE.
 - 1 EA. FOR 1 1/2" PIPE.
 - 1 EA. FOR 1 1/2" PIPE.
 - 2 EA. 1/65" STAR SPRINKLERS W/ B' TOPFACE, SPRINKLER HEADS W/ SPRINKL ATTACHMENT TOOL & SPRINKLER WRENCH.
 - 2 EA. GRINNELL #14 Z61 4" RISER CLAMPS.
 - 2 EA. A.T.C. #2 6" DECK SLEEVES 6" x 4" LONG.
 - 400 EA. 1/2" WASHERS
 - 400 EA. 1/2" WASHERS
 - 400 EA. 1/2" WASHERS
 - 10 EA. OF 5/8"
- STOCKLISTER TO ORDER
- 20 EA. 3/8" x 1/2" SHEET METAL SCREWS.
 - 6 EA. 1" WALL PLATES.
 - 1 EA. 1 1/2" WALL PLATE.
 - 1 EA. 1 1/2" WALL PLATE.
 - 2 EA. 4" WALL PLATES.
 - 3 EA. 4" FLOOR PLATES.
 - 45 EA. 3/8" x 1/2" CAP SCREWS.
 - 15 EA. 3/8" NUTS.
 - 15 EA. 3/8" WASHERS.
 - 17 EA. 1/2" x 1/2" CAP SCREWS.
 - 17 EA. 1/2" NUTS.
 - 17 EA. 1/2" WASHERS.
 - 3 EA. 1" GLOBE VALVES.
 - 3 EA. 1" 45° ELL.
 - 3 EA. 1" BEARS PLUGS.
 - 20 EA. 1/2" 5" CLIP HANGERS W/O 3/8" x 1/2" DIM. = BOTTOM OF CEILING TO 6" OF PIPE FOR 1" PIPE.



PIPE SCHEDULE	CRANKING	MAINS
3	EACH OF 3/4"	EACH OF 3/4"
1	EACH OF 3/4"	EACH OF 3/4"

PAINT MARK
 RED

- WORK TO BE DONE BY OTHERS
- ALL ELECTRICAL WIRING & ELECTRICAL DEVICES.
 - PAINTING & CLEANING OF PIPE.
 - LIGHT WATER HEAT & ELECTRICAL POWER DURING CONSTRUCTION, IS TO BE FURNISHED FOR SECURITY IF DELAYED. REQUIRED PATCHING OF FIRE PROOFING DUE TO INSTALLATION OF SPRINKLER PIPING & HANGERS.

APPROVED BY	DATE	SURVEYED BY	DATE
INSURANCE SERVICES CO.	10/11/74		
DUNHAM MARKS ENGINEERS	10/11/74		
COUNTY INSPECTOR DEPT.	10/11/74		
ATLANTA CITY (A OFFICE)	10/11/74		
THE MARSHALL	10/11/74		

TITLE	NO. OF SPRINKLERS SHOWN ON THIS SET
SAN MATEO COUNTY SERVICES BUILDING, 3415 GARDNER CITY AVENUE, YAST PALO ALTO, CALIFORNIA, SAN MATEO COUNTY	17
NO. OF SPRINKLERS ON JOB	41
CONTRACT NO.	65-876

Automatic Sprinkler CORPORATION OF AMERICA

AS BUILT ORIGINAL LIST