

Middlefield Road Improvement Project

*Department of Public Works
Status / Update*

November 16, 2023



Project Limits and Key Components

Roadway Improvements:

- Pacific Avenue to Fifth Avenue (0.5 mi)

Utility Undergrounding:

- MacArthur Avenue to and Fifth Avenue

Sanitary Sewer Replacement:

- Douglas Avenue to Sixth Avenue



General Layout and Elements

- New lane configuration: 1 lane in each direction
- Widened Sidewalks
- Street Lights
- Buffered Bike Lanes
- High Visibility Crosswalks
- Rectangular Rapid Flash Beacon (RRFB)
- Traffic Signals
- Street Trees
- Bike Racks, Benches, Trash Receptacles
- Public Wifi, Smart features
- Undergrounding Overhead Utilities
- Green Infrastructure/stormwater treatment features



Construction Updates

Sanitary Sewer Work

- 100% completed with Sanitary Sewer Work

Storm Drain/Green Infrastructure Installation

- 90% complete
- Completed new underground storm drain pipes and Green Infrastructure Basins installation
- Green infrastructure vegetation to be planted



Construction Updates

Joint Trench Work

- 95% completed
- Remaining areas include three (3) crossing under UPRR and two (2) crossings under Redwood Junction train tracks

Surface Improvements (Sidewalks and Curb & Gutter- 90% completed)

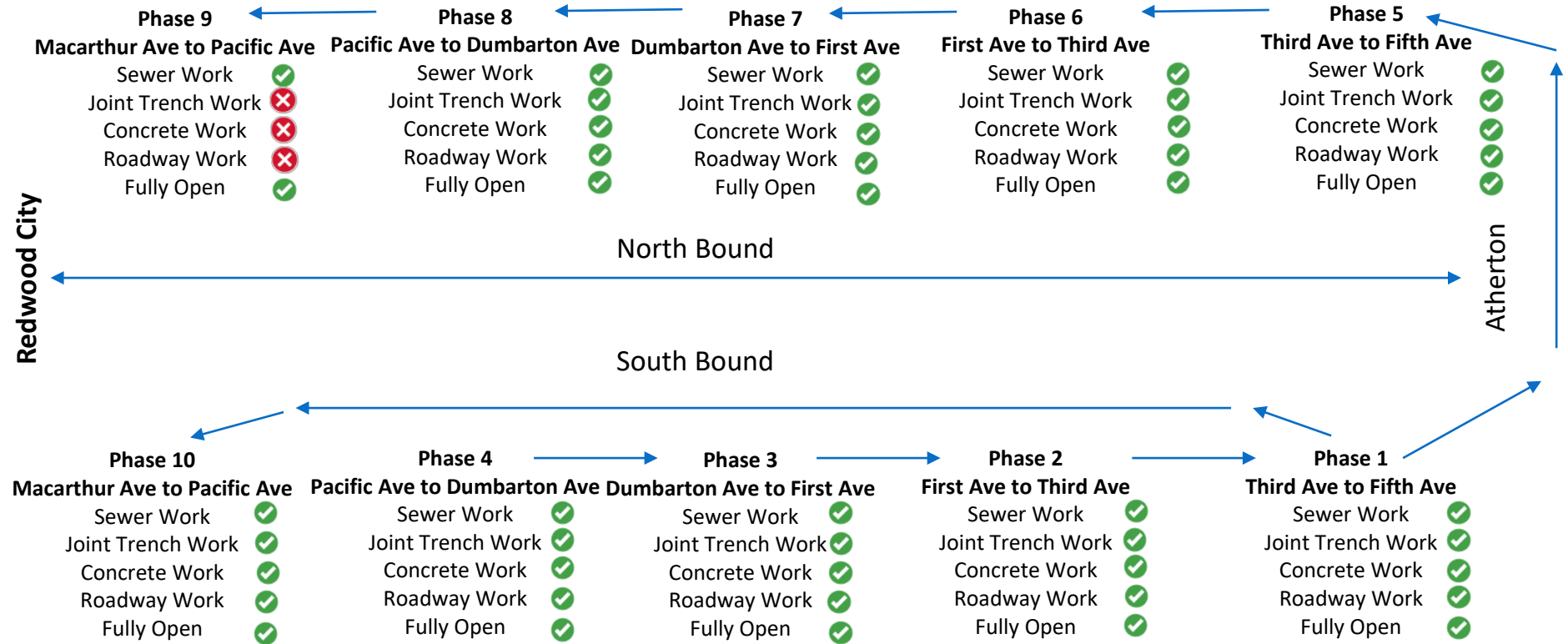
- Phases 1, 2, 3, 4, 5, 6, 7, 8 and 10 are completed
- Remaining portions of work in Phases 9

Site Furnishings

- Trees to be planted
- Benches, bike rack and trash receptacles to be installed



Project Phases, Progression of Work and Status



Access During Construction



Public Convenience – Detour for pedestrians



Public Convenience – Detour for pedestrians



Access During Construction



Public Convenience – Temporary Business Access



Public Convenience – Temporary Business Access



Construction

Phase 5 Sidewalk



Phase 5 sidewalk removed



Phase 5 sidewalk removed

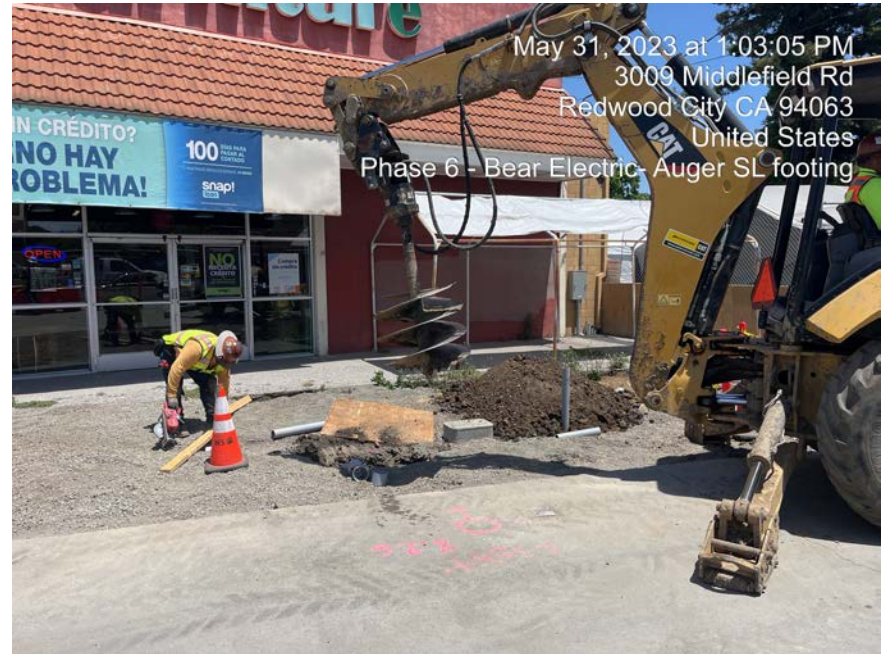


Construction

Phase 6 Sidewalk



Phase 6 trench for electrical conduits



Phase 6 streetlight foundation



Construction

Phase 8 Sidewalk



Phase 8 sidewalk pour



Phase 8 sidewalk pour

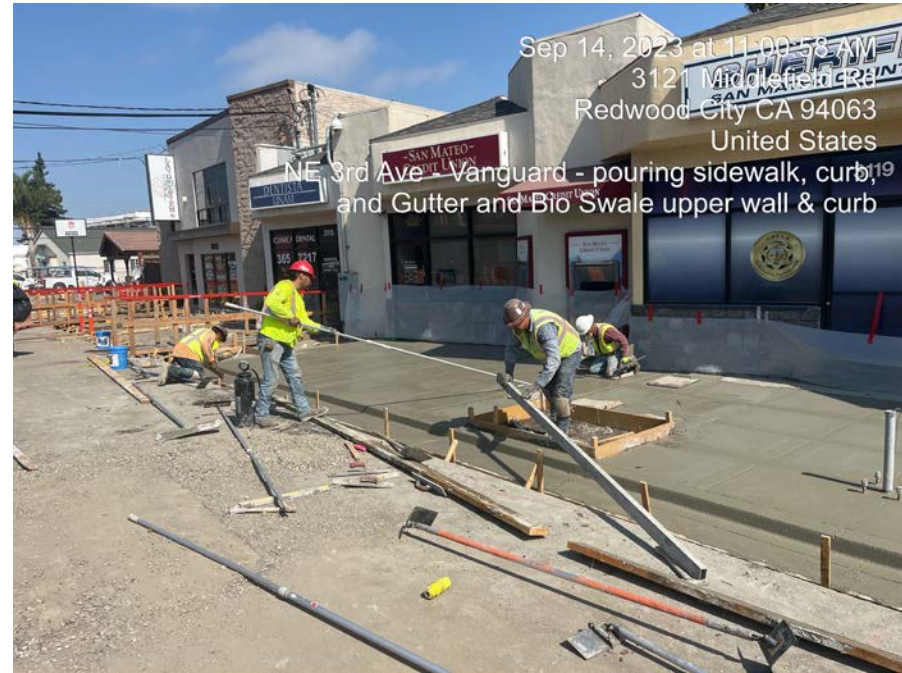


Construction

Phase 5 Sidewalk



Phase 5 sidewalk formwork



Phase 5 sidewalk poured



Construction

Phase 7 Sidewalk



Phase 7 concrete work completed



Phase 7 concrete work completed



Construction

Phase 5 AT&T Vault



New AT&T Vault in Phase 5



New AT&T Vault in Phase 5



Construction

Phase 5 AT&T Vault



New AT&T Vault in Phase 5



New AT&T Vault in Phase 5



Construction

Phase 5 AT&T Vault



New AT&T Vault in Phase 5



New AT&T Vault in Phase 5



Construction

Phase 1 Roadway Work



Phase 1 Roadway work



Phase 1 Roadway work



Construction

Phase 1 Roadway Work



Phase 1 Roadway paving



Phase 1 Roadway Paving



Construction

Sanitary Sewer Jack and Bore



Temporary Sewer by-pass system



Jack and Bore Entry Pit



Construction

Sanitary Sewer Jack and Bore



Jack and Bore pilot hole being installed



Jack and Bore Casing being installed



Construction

Sanitary Sewer Jack and Bore



Sewer pipe being installed thru casing



Sewer pipe installed and connected at the receiving pit



Project Updates

Project Challenges

- Working around community needs for access and limiting impacts
- UPRR and SamTrans input for railroad crossing
- Weather impacts may slow construction

Accomplishments

- Completed concrete work on majority of phases (only 1 remain)
- Installed streetlights and pedestrian lights for all phases
- Completed jack and bore work under railroad tracks to install sanitary sewer pipes



Remaining Work

Joint trench jack and bore

- Middlefield Road – in construction
- Redwood Junction – start early Dec.

Landscaping elements

- Bio-retention planting – in construction
- Trees – en route and will be installed in Dec.

Site amenities

- Solar Charging Benches
- Bike Racks
- Trash Receptacles

Final paving (RR to 5th)– Nov. 27 to Dec. 4

- Night Paving
- Weather and Temperature dependent

Striping

- New lane configuration anticipated in early December 2023

****WORK WILL BE WEATHER DEPENDENT****



Remaining Work



Ginkgo Biloba (Autumn Gold)

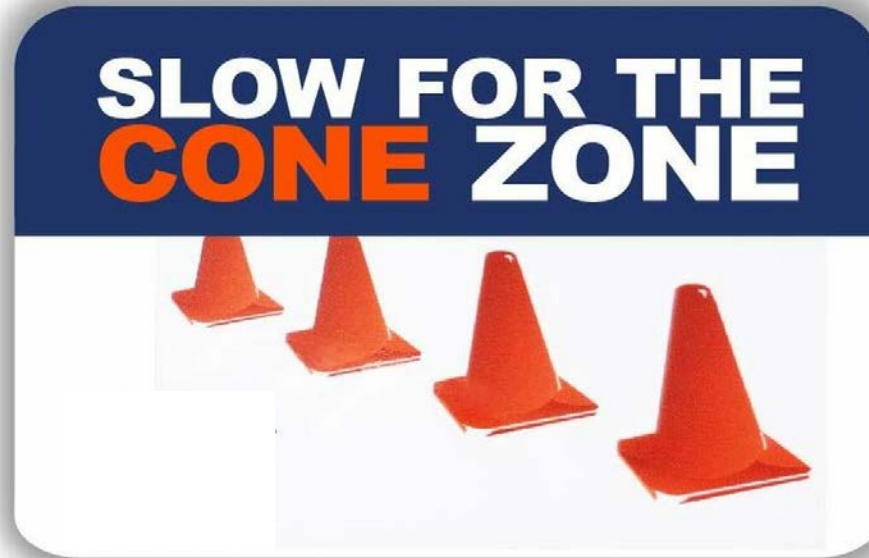
Remaining Work



Acer Ruburn Redpointe (Northwest Shade Tree)

Slow for the Cone Zone

- Slow for the Cone Zone
- Be aware of the lane configuration changes and **obey STOP signs**
- Thank you for your patience as we work to complete the Project



Stay up to date

- Up to date construction information can be found at Middlefieldroad.org

- For questions or comments, contact us at:

Construction related information:

By phone at 650-363-4100 or by email at DPW_MiddlefieldRdProject@smcgov.org

All other project related information:

By phone at 650-363-1800 or by email at CommunityAffairs@smcgov.org



Questions?

