

DRAINAGE NOTES

1. DRAINAGE INTENT: IT IS THE INTENT OF THE DRAINAGE SYSTEM TO CONVEY ROOF RUNOFF TO A SAFE LOCATION, AND TO MINIMIZE EXCESSIVE MOISTURE AROUND FOUNDATIONS. DIRECT SLOPES SUCH THAT STORMWATER WILL NOT BE DIVERTED ONTO ADJACENT PROPERTIES.
2. ALL DOWNSPOUT DRAIN LINES SHALL LEAD TO DETENTION BASIN, AS SHOWN.
3. ALL ROOF DRAINAGE PIPES SHALL BE 4" DIAMETER MINIMUM SOLID PIPE, SLOPED AT 1% MINIMUM.
4. IT IS THE PROPERTY OWNERS RESPONSIBILITY TO CHECK ON ALL STORMWATER FACILITIES SUCH AS ROOF GUTTERS, DOWNSPOUT LINES, BI-DIRECTIONAL AREA, DETENTION BASIN, AND ENERGY DISSIPATERS TO BE SURE THAT THEY ARE CLEAR OF EXCESSIVE DEBRIS AND OPERATING EFFICIENTLY. THE FACILITIES SHALL BE CHECKED EVERY FALL AND PERIODICALLY DURING THE RAINY SEASON.

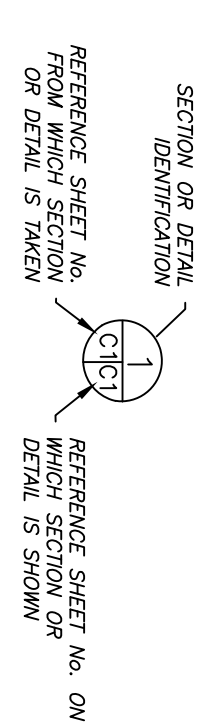
GRADING NOTES

CUT VOLUME: 1320 CY
 FILL VOLUME: 960 CY
 VOLUMES ABOVE ARE APPROXIMATE.
 THE SUBGRADE BELOW ALL PAVED AREAS SHALL BE BASEROCK COMPACTED TO 95%.
 ALL GRADING SHALL CONFORM TO LOCAL CODES AND ORDINANCES.
 ALL TRENCHES UNDER PROPOSED PAVED AREAS OR CONCRETE SHALL BE BACKFILLED TO SUBGRADE ELEVATION WITH COMPACTED APPROVED GRANULAR MATERIALS. IF TRENCHES ARE IN PROPOSED LANDSCAPE AREAS, THEY SHALL BE BACKFILLED WITH COMPACTED APPROVED GRANULAR MATERIAL TO WITHIN ONE FOOT OF FINISHED GRADE, AND THEN FILLED WITH HAND TAMPED SOILS.

GENERAL NOTES

1. PLANS PREPARED AT THE REQUEST OF: TRIPADDER SINGH, OWNER
2. TOPOGRAPHY BY OTHERS
3. THIS IS NOT A BOUNDARY SURVEY.
4. ELEVATION DATUM ASSUMED.
5. THE GEOTECHNICAL REPORT.
6. GEOTECHNICAL STUDY FINDING SHALL BE RETAINED ON THE PROJECT SITE. ENGINEER OF RECORD OF RECORD SIGNATURES AND ASSOCIATES, WITH THE CONTACT NUMBER (650) 728-3590. THE CONTRACTOR MUST NOTIFY THE GEOTECHNICAL ENGINEER OF RECORD AT LEAST 48 HOURS BEFORE CONSTRUCTION OF GEOTECHNICAL RELATED WORK. THE GEOTECHNICAL PART OF CONSTRUCTION WORK, INCLUDING BUT NOT LIMITED TO, ALL THE EARTHWORK AND CONSTRUCTION, MUST SHALL BE APPROVED BY THE ENGINEER OF RECORD.
6. STORMWATER MANAGEMENT CONSTRUCTION INSPECTIONS SHALL BE SCHEDULED FOR APPLICABLE DRAINAGE INSPECTIONS, WHICH INCLUDE SITE CLEARANCE AND EROSION CONTROL, MEASURES INSTALLATION AS WELL AS INSPECTION OF MAJOR DRAINAGE CONTAINMENT, TREATMENT AND CONVEYANCE DEVICES BEFORE BEING BURIED (INCLUDING REQUIRED MATERIAL LABELS, E.G. PIPES, SIG-GRADE MATERIALS, ETC.). PLEASE FOLLOW THE AT 650-728-3590 TO SCHEDULE DRAINAGE INSPECTIONS. ACCORDINGLY, THERE SHALL BE THREE INSPECTIONS: ONE FOR EROSION CONTROL, INSTALLATION, ONE BEFORE DRAINAGE FACILITIES ARE BURIED, AND ONE FOR FINAL WALK AROUND.

SECTION AND DETAIL CONVENTION



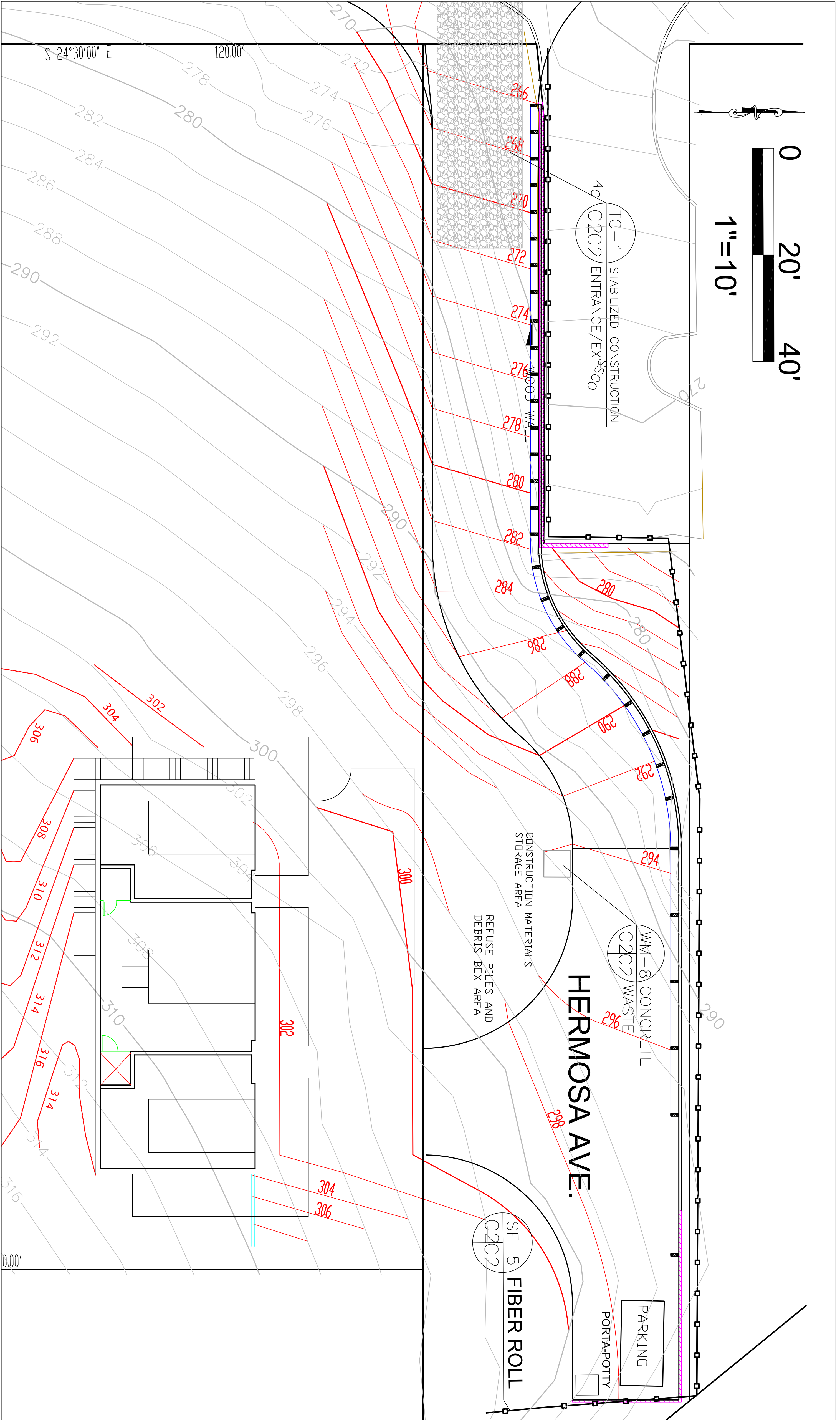
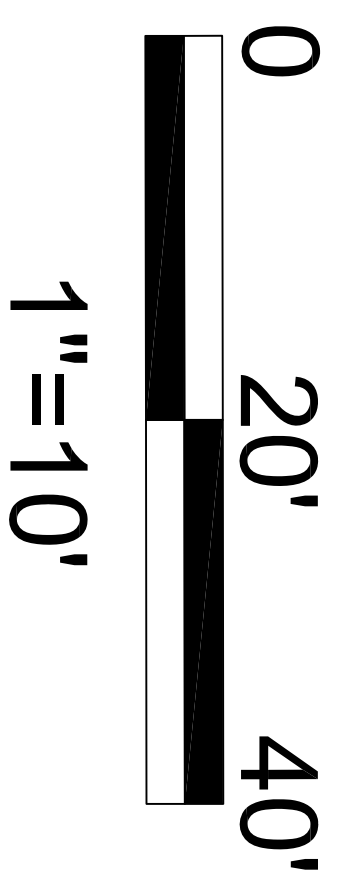
Sigma Prime Geosciences, Inc.
 SIGMA PRIME GEOSCIENCES, INC.
 332 PRINCETON AVENUE
 HALF MOON BAY, CA 94019
 (650) 728-3590
 FAX: 728-3593

DATE: 1-30-24
 DRAWN BY: CMK
 CHECKED BY: AZG
 REV. DATE:
 REV. DATE:
 REV. DATE:

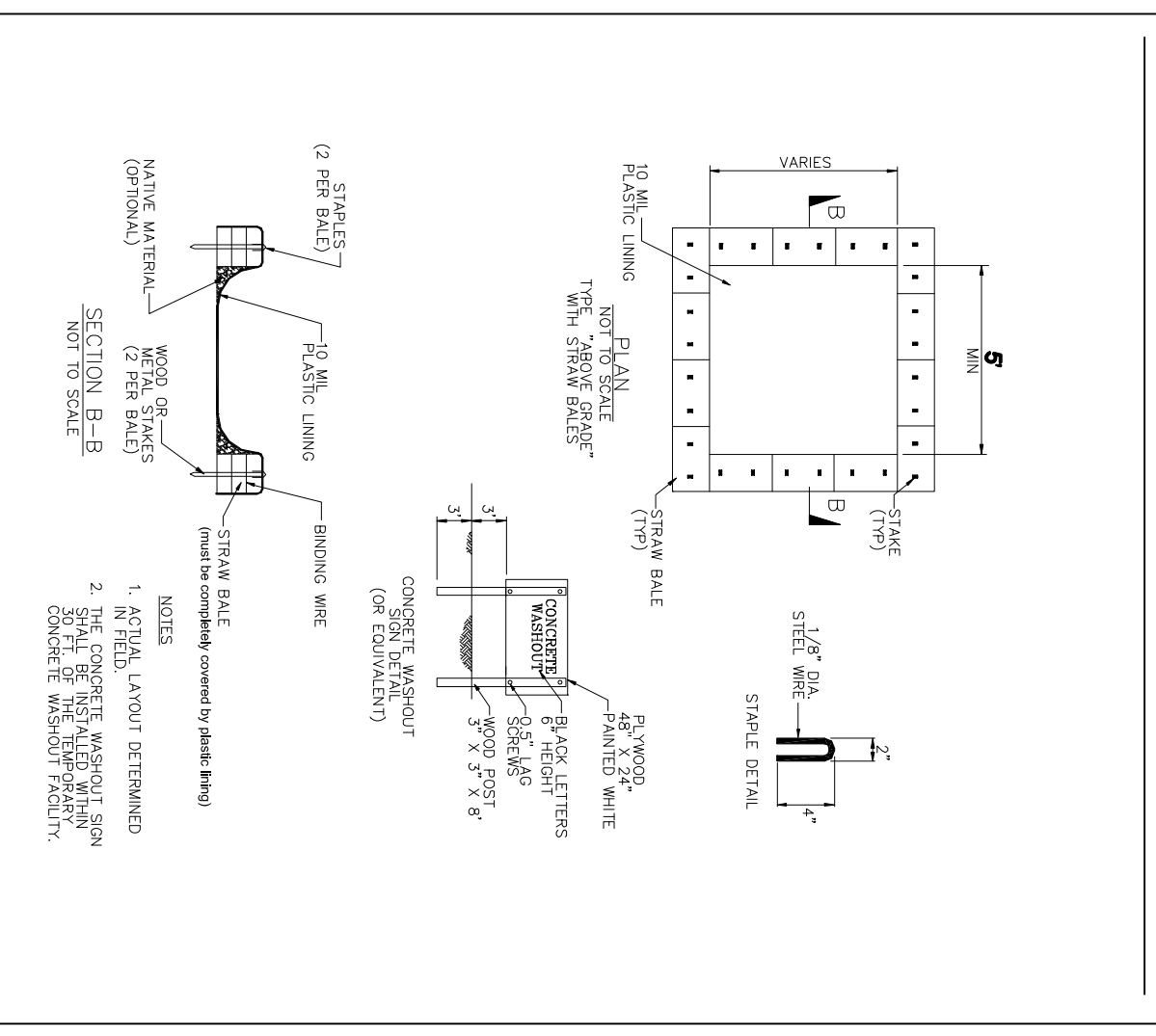
GRADING PLAN

SINGH PROPERTY
 MIRAMAR, CA
 APN 048-076-120

SHEET
C-1



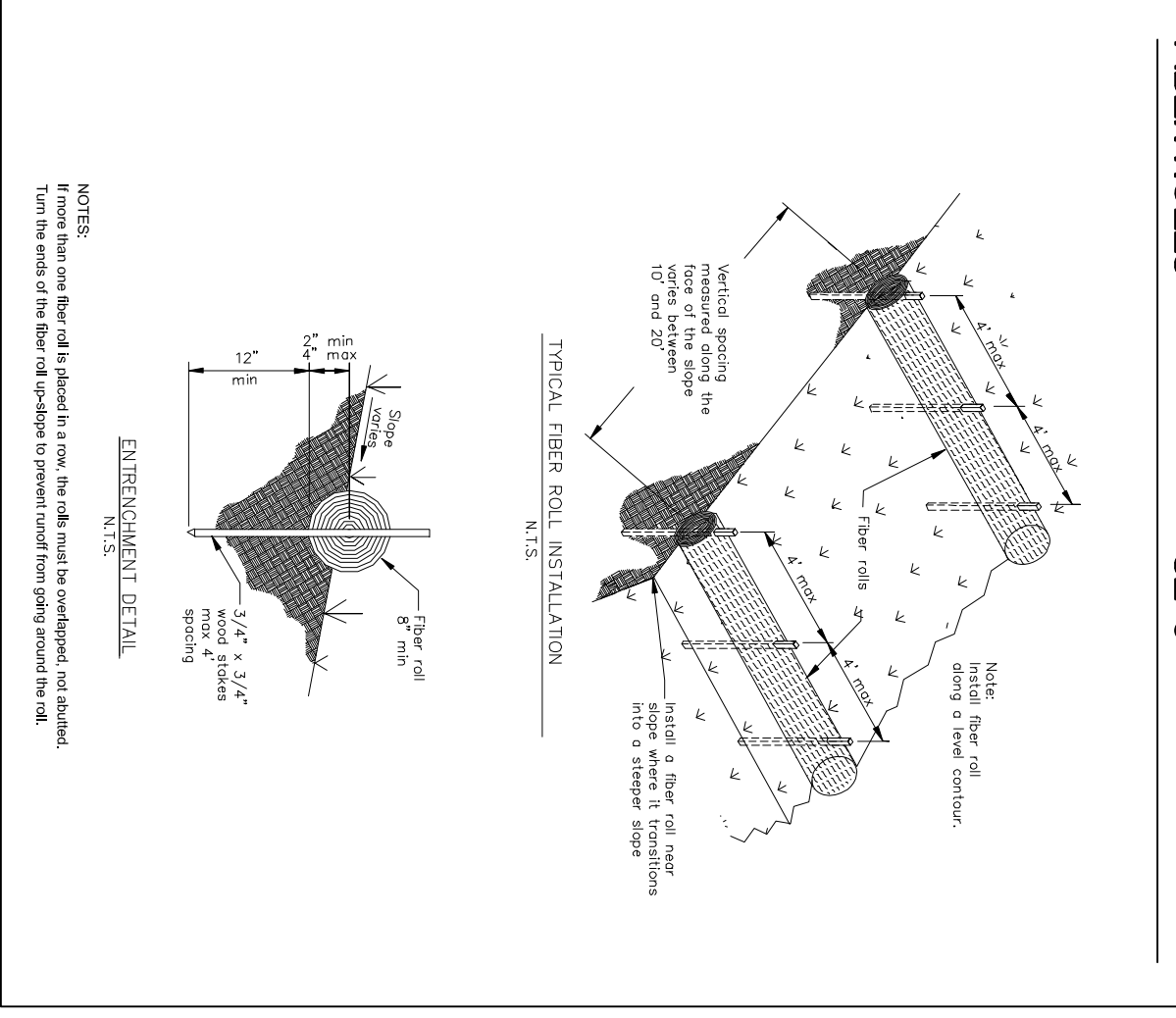
CONCRETE WASTE MANAGEMENT WM-8



EROSION CONTROL NOTES

1. GRADING MAY TAKE PLACE DURING WET WEATHER AFTER OCTOBER 1 PROVIDED THE FOLLOWING PROVISIONS ARE FOLLOWED.
2. NO GRADING SHALL TAKE PLACE DURING RAINY WEATHER OR FOR A PERIOD OF AT LEAST 24 HOURS FOLLOWING RAIN.
3. ALL EXPOSED SOIL SHALL BE TEMPORARILY PROTECTED FROM EROSION WITH LUTE AS SOON AS POSSIBLE.
4. ALL STOCKPILED SOIL SHALL BE COVERED AT ALL TIMES AND REMOVED FROM SITE AS SOON AS POSSIBLE. IF SCHEDULED FOR OFF-FALL.
5. ALL EXPOSED SURFACES SHALL BE PERMANENTLY PROTECTED FROM EROSION WITH SEEDING AND/OR LANDSCAPING. SEED MIX SHALL BE 7:1:3 PER ACRE ANNUAL RYGRASS OR APPROVED SUBSTITUTE. SEED SHALL BE COVERED WITH STRAW MULCH AT A RATE OF 2 TONS/ACRE.
6. ROCKED CONSTRUCTION ENTRANCE SHALL BE 50 FEET LONG BY 24 FEET WIDE AND CONFORM TO THE FOLLOWING:
 - A. THE MATERIAL FOR THE PAD SHALL BE 3 TO 6 INCH STONE.
 - B. PAD SHALL BE NOT LESS THAN 12" THICK.
 - C. THE PAD SHALL BE CONFORM TO THE FOLLOWING:
 1. PERIODIC TOP DRESSING WITH ADDITIONAL STONE AS CONDITIONS DEMAND AND REPAIR AND/OR CLEANOUT OF ANY MEASURES USED TO TRAP SEDIMENT. ALL SEDIMENT SPILLED, DROPPED, WASHED OR TRACKED ONTO PUBLIC RIGHT-OF-WAY SHALL BE REMOVED IMMEDIATELY.
 2. WHEN NECESSARY, WHEELS SHALL BE CLEANED TO REMOVE SEDIMENT PRIOR TO ENTRANCE ONTO PUBLIC RIGHT-OF-WAY. WHEN WASHING IS REQUIRED, IT SHALL BE DONE ON AN AREA THAT DRAINS TO THE CONCRETE WASHOUT AREA.
 3. CONCRETE WASHOUT AREA SHALL BE SURROUNDED BY A SINGLE LAYER OF SAND BAGS TO CONTAIN FLODS, CHANNEL INTO AREA SHALL BE CLEANED TO ALLOW THE DEBRIS (SEE NOTE 6D, ABOVE).

FIBER ROLLS SE-5



GENERAL EROSION AND SEDIMENT CONTROL NOTES

- Perform clearing and earth-moving activities only during dry weather. Measures to ensure adequate erosion and sediment control shall be installed prior to earth-moving activities and construction.
- Measures to ensure adequate erosion and sediment control are required year-round. Stabilize all denuded areas and maintain erosion control measures continuously between October 1 and April 30.
- Store, handle, and dispose of construction materials and wastes properly, so as to prevent their contact with stormwater.
- Control and prevent the discharge of all potential pollutants, including pavement cutting wastes, paints, concrete, petroleum products, chemicals, wash water or sediments, and non-stormwater discharges to storm drains and watercourses.
- Use sediment controls or filtration to remove sediment when dewatering site and obtain Regional Water Quality Control Board (RWQCB) permit(s) as necessary.
- Avoid cleaning, fueling, or maintaining vehicles on-site, except in a designated area where wash water is contained and treated.
- Limit and time applications of pesticides and fertilizers to prevent polluted runoff.
- Limit construction access routes to stabilized, designated access points
- Avoid tracking dirt or other materials off-site; clean off-site paved areas and sidewalks using dry sweeping methods.
- Train and provide instruction to all employees and subcontractors regarding the Watershed Protection Maintenance Standards and construction Best Management Practices.
- Placement of erosion materials is required on weekends and during rain events.
- The areas delineated on the plans for parking, grubbing, storage etc., shall not be enlarged or "run over."
- Dust control is required year-round.
- Erosion control materials shall be stored on-site

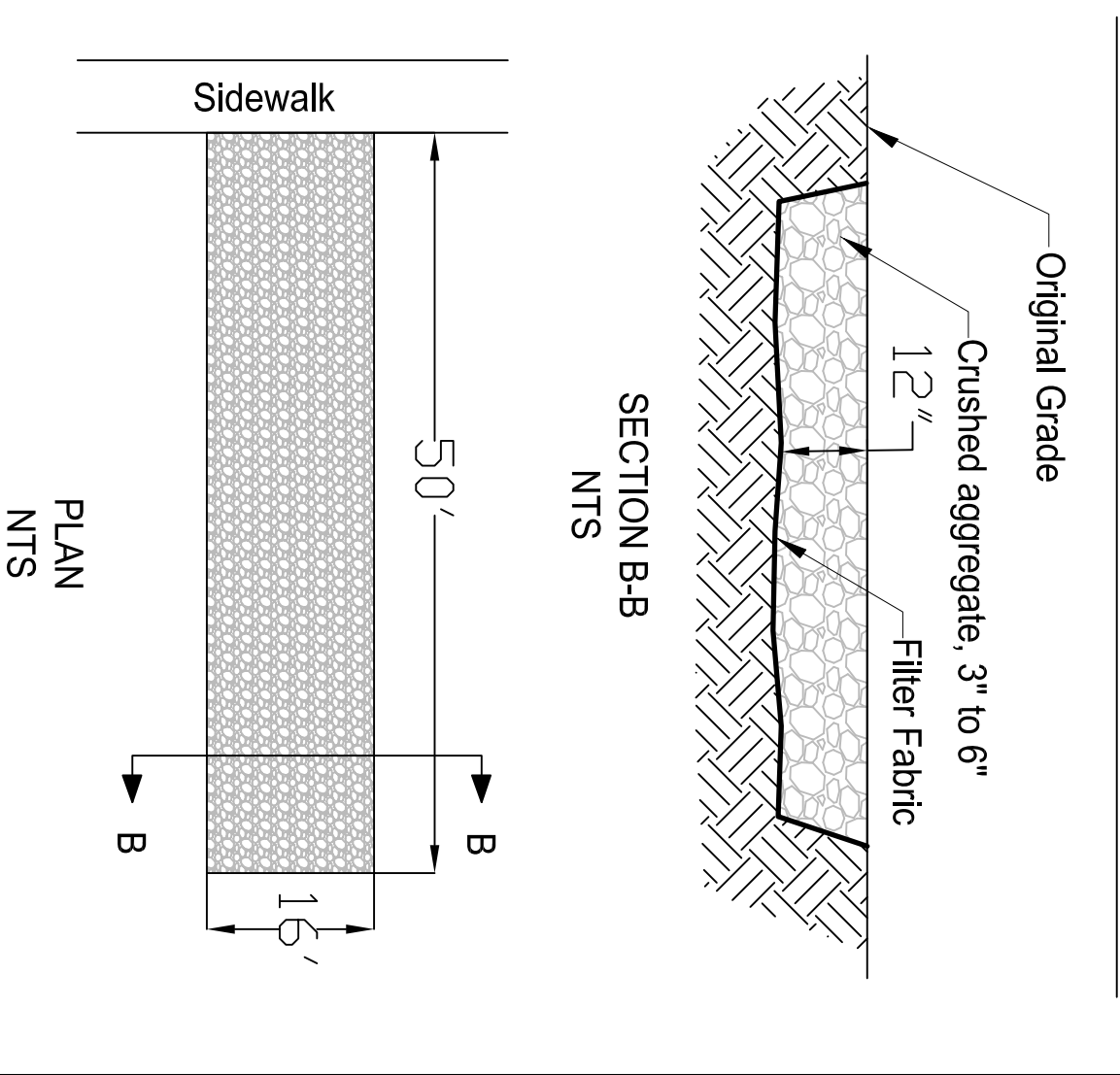
EROSION CONTROL POINT OF CONTACT

THIS PERSON WILL BE RESPONSIBLE FOR EROSION CONTROL AT THE SITE AND WILL BE THE COUNTY'S MAIN POINT OF CONTACT IF CORRECTIONS ARE REQUIRED.

NAME: TRIPANDER SINGH
 TITLE/QUALIFICATION: OWNER/BUILDER
 PHONE: 650-281-5171
 PHONE: _____
 E-MAIL: tripandersingh@yahoo.com

- USE OF PLASTIC SHEETING BETWEEN OCTOBER 1ST AND APRIL 30TH IS NOT ACCEPTABLE.
- UNLESS FOR USE ON STOCKPILES WHERE THE STOCKPILE IS ALSO PROTECTED WITH FIBER ROLLS CONTAINING THE BASE OF THE STOCKPILE.

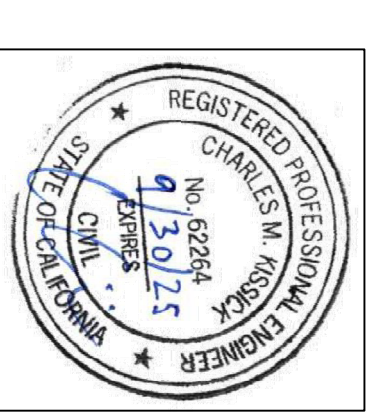
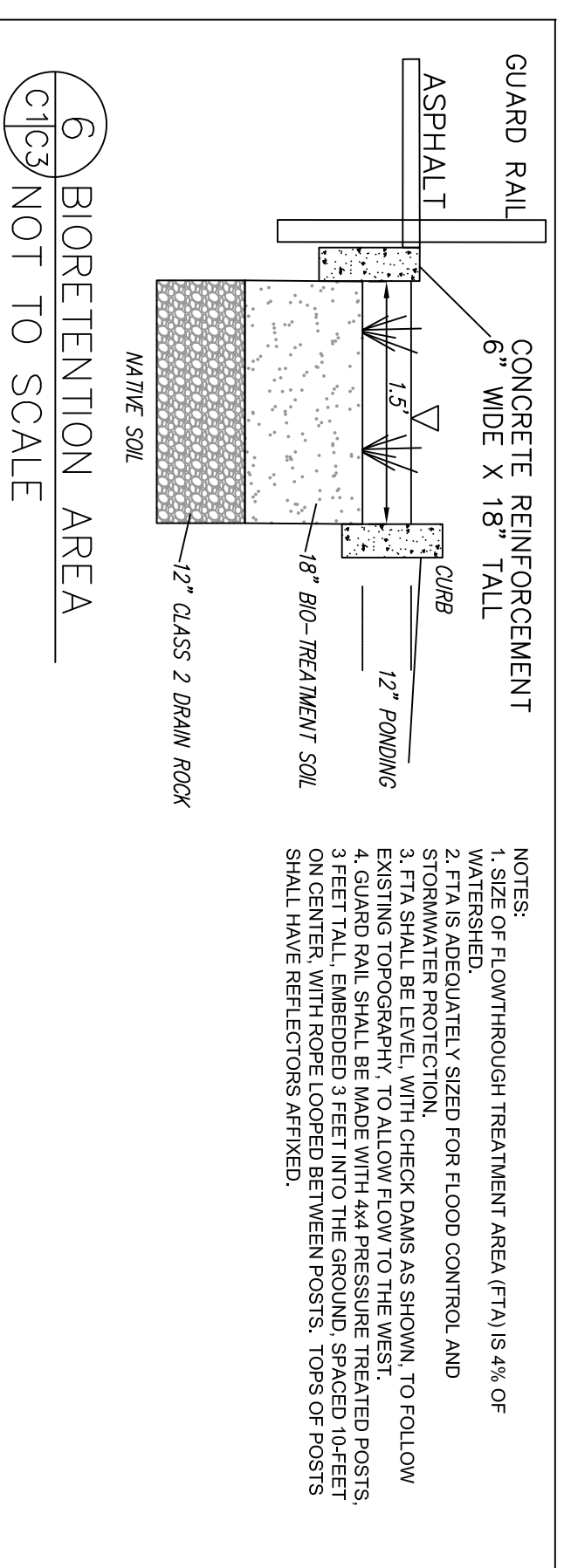
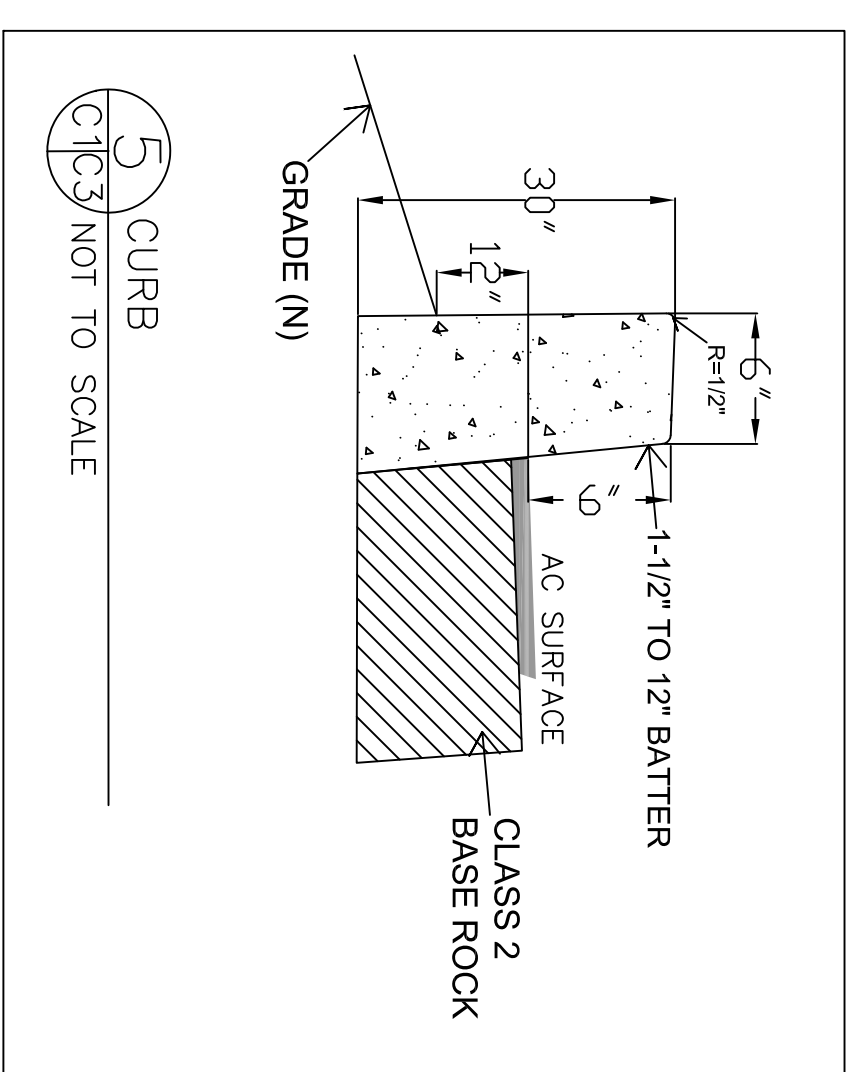
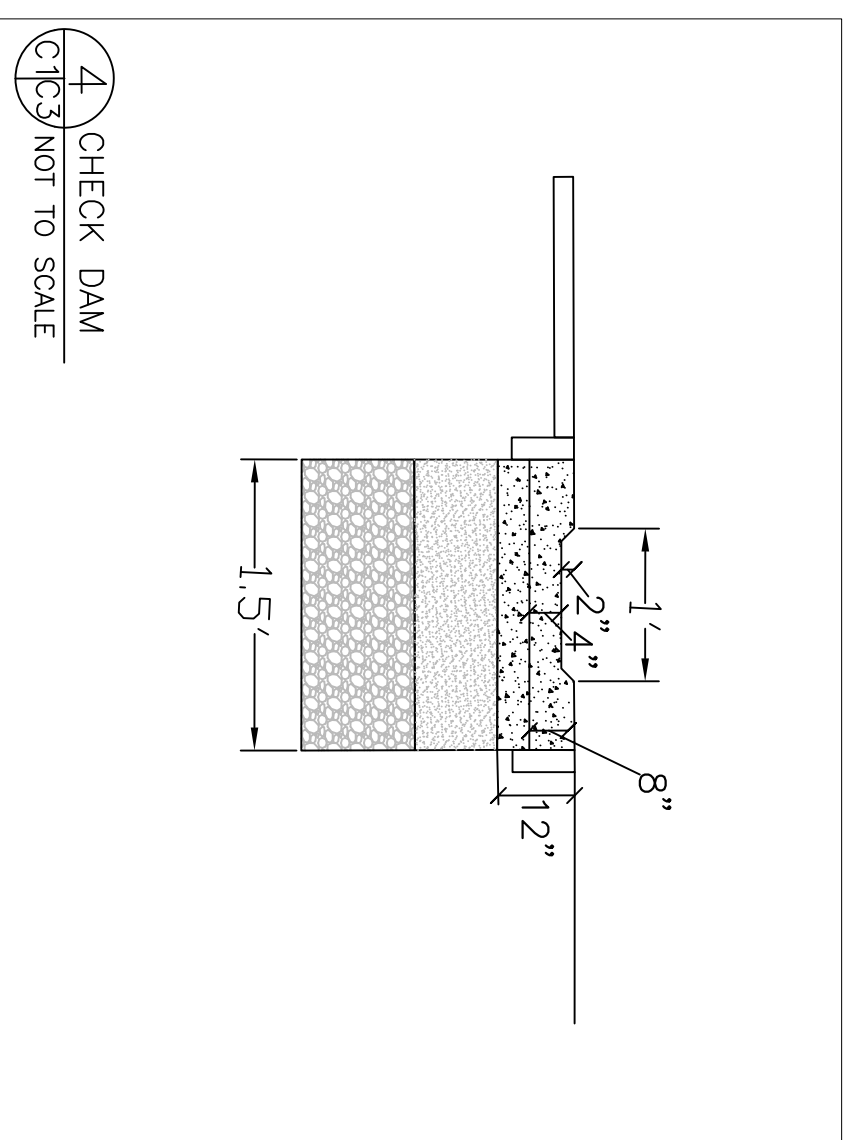
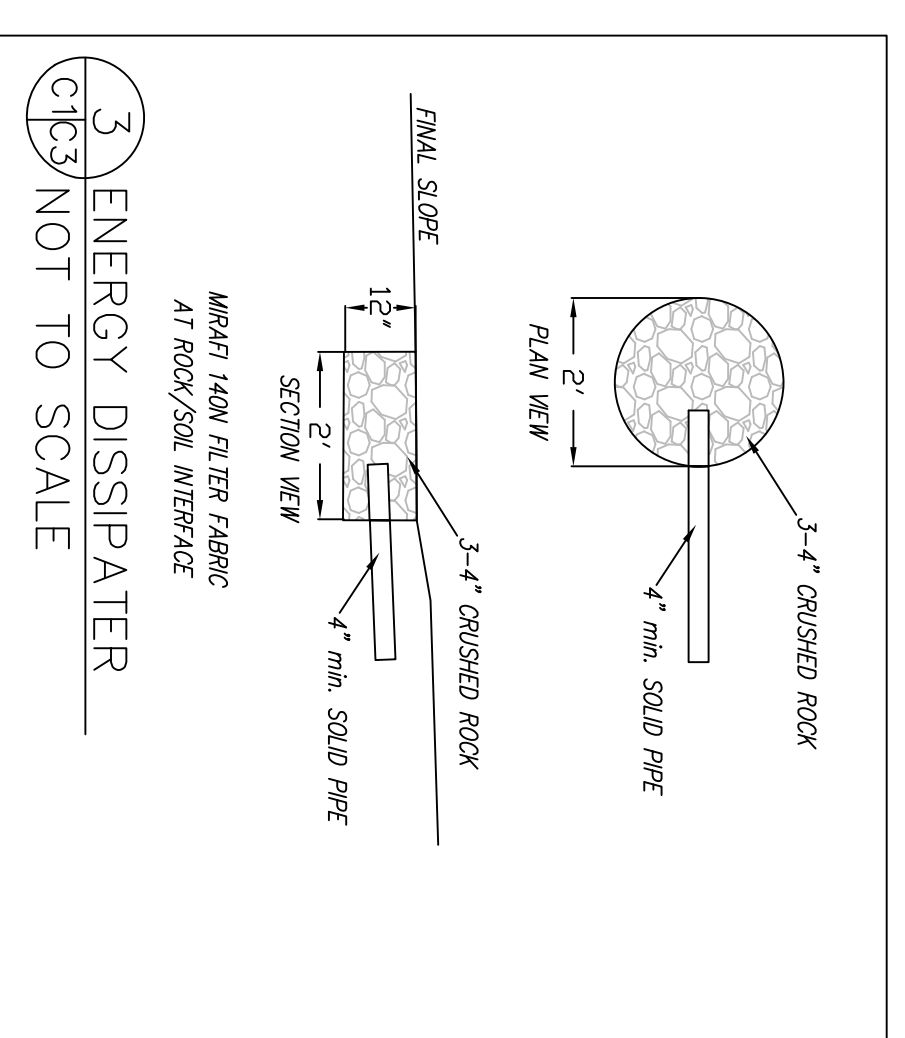
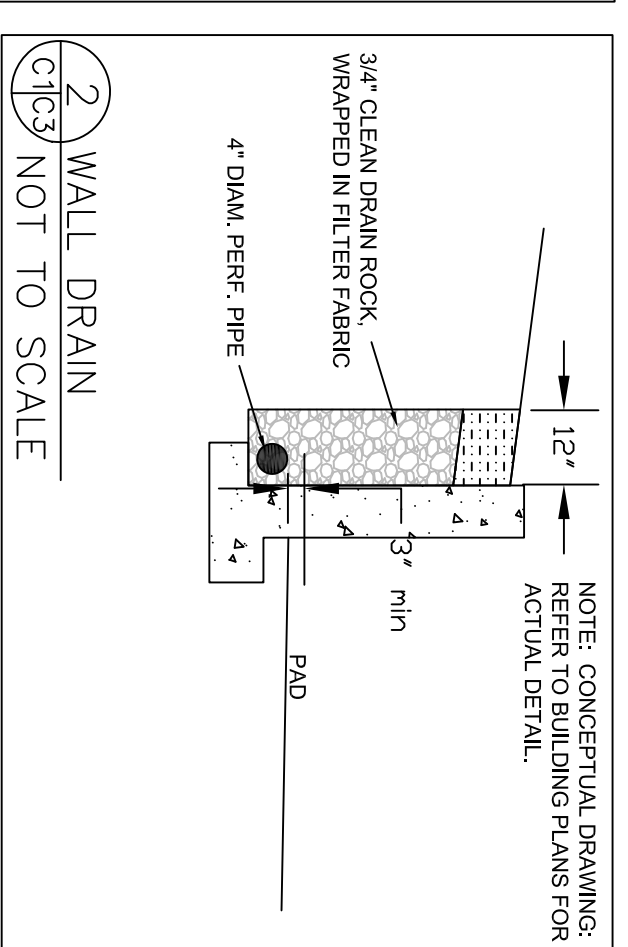
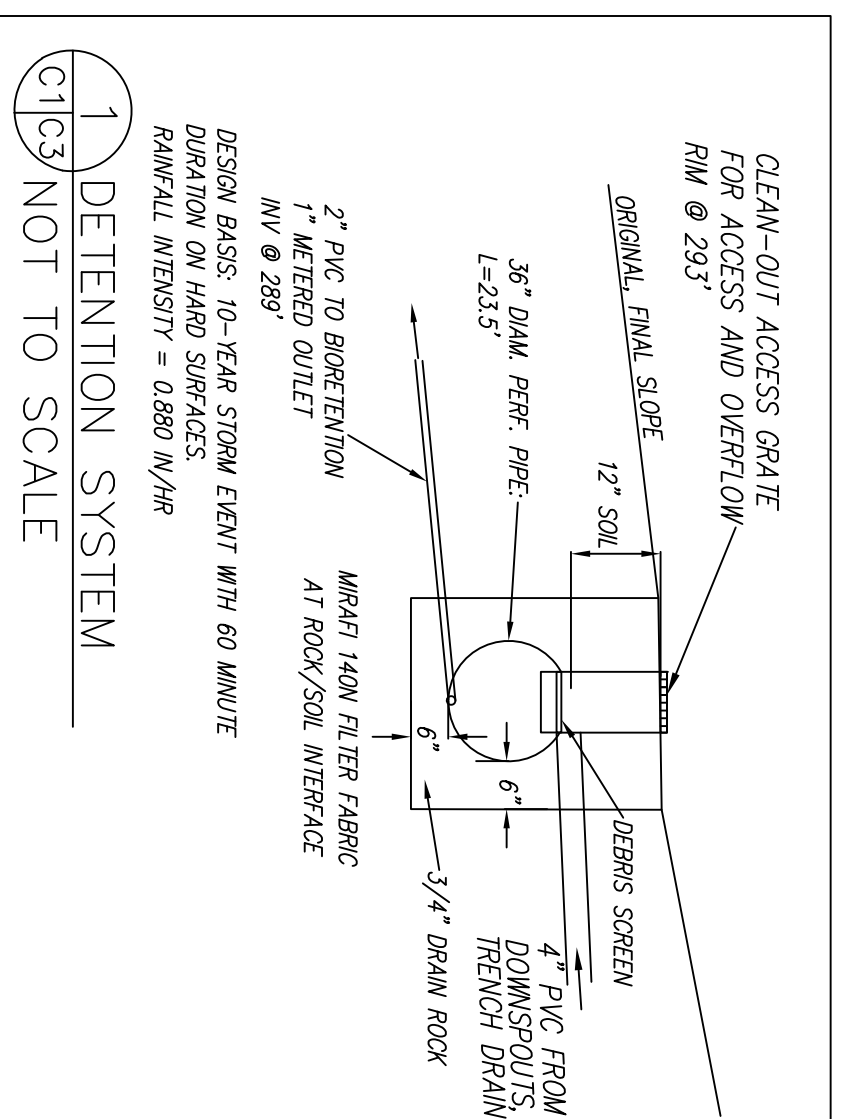
STABILIZED CONSTRUCTION ENTRANCE/EXIT TC-1



Sigma Prime Geosciences, Inc.
 SIGMA PRIME GEOSCIENCES, INC.
 332 PRINCETON AVENUE
 HALF MOON BAY, CA 94019
 (650) 728-3590
 FAX 728-3593

DATE: 1-30-24
 DRAWN BY: CMK
 CHECKED BY: AZG
 REV. DATE:
 REV. DATE:
 REV. DATE:

EROSION AND SEDIMENTARY CONTROL PLAN, TREE PROTECTION PLAN
 SINGH PROPERTY
 MIRAMAR, CA
 APN 048-076-120



Sigma Prime Geosciences, Inc.
SIGMA PRIME GEOSCIENCES, INC.
332 PRINCETON AVENUE
HALF MOON BAY, CA 94019
(650) 728-3590
FAX: 728-3593

DATE: 1-30-24
DRAWN BY: CMK
CHECKED BY: AZG
REV. DATE:
REV. DATE:
REV. DATE:

DETAILS
SINGH PROPERTY
MIRAMAR, CA
APN 048-076-120