



Voter Engagement in San Mateo County

Presented by Yajaira Ortega, Senior
Manager of Policy and Equity





Thrive™

The Alliance of Nonprofits
for San Mateo County

STRATEGIES

Strengthening People

Strengthening Organizations

Strengthening Communities

THEMES

Capacity Building

Cross-Sector Collaboration

Policy & Advocacy



Thrive's Past Participation



CANDIDATE FORUM
SAN MATEO COUNTY BOARD OF SUPERVISORS, DISTRICT 4
Tuesday, January 30, 2024
6:00 - 8:00 pm

Paul Bocanegra Celeste Brevard
Maggie Cornejo Lisa Gauthier Antonio Lopez

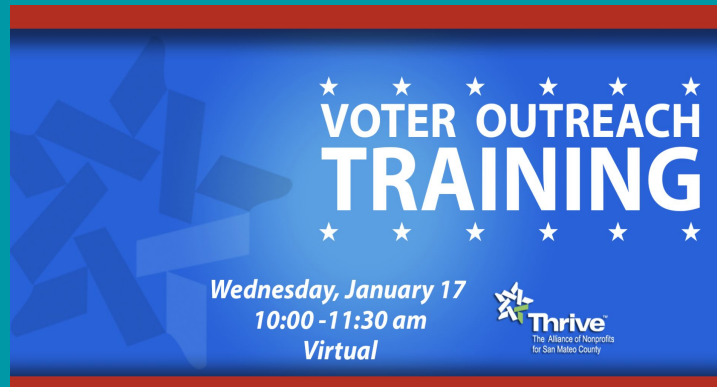
Thrive The Alliance of Nonprofits for San Mateo County
LEADERSHIP COUNCIL SAN MATEO COUNTY



CANDIDATE CONVERSATION ON CHILDREN
SAN MATEO COUNTY BOARD OF SUPERVISORS RACES
Monday, February 5, 2024
5:30 - 7:00 pm
San Mateo Public Library
Childcare Available

Register at thrivealliance.org

Thrive The Alliance of Nonprofits for San Mateo County
CHOOSE CHILDREN
SVCF
SILICON VALLEY COMMUNITY FOUNDATION



VOTER OUTREACH TRAINING

Wednesday, January 17
10:00 - 11:30 am
Virtual

Thrive The Alliance of Nonprofits for San Mateo County

Election Education Toolkit



What is an Election Education Toolkit?

- Outreach material to help nonprofit organizations educate their community on the General election.

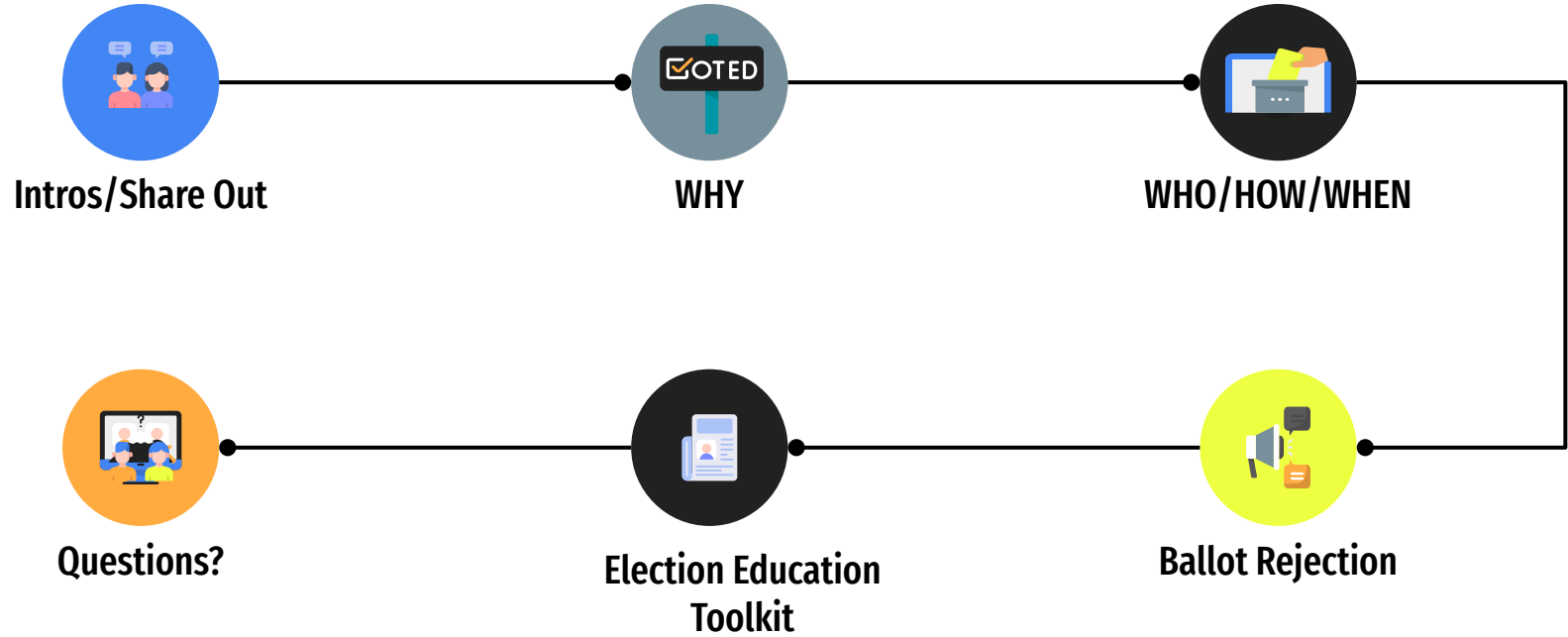
Who is it from?

- This toolkit was sponsored by Silicon Valley Community Foundation & created by us.

What kind of support do we offer?

- All outreach materials + \$1,500 stipend

Agenda



WHY is it important to vote?



- Elections may be decided on small margins, so every vote counts!
 - Examples: Woodside 5 votes (!), EPA 15 votes, some City Council fewer than 25 votes
 - Congressional District 16 was decided by 5 votes

In San Mateo County (and across California) Latinx, Asian, and youth vote at significantly lower rates than white and older voters.

WHO is eligible to vote?

- A United States citizen and a resident of California
- 18 years old or older on Election Day
- Not currently serving a state or federal prison term for the conviction of a felony
- Not currently found mentally incompetent to vote by a court



HOW to vote

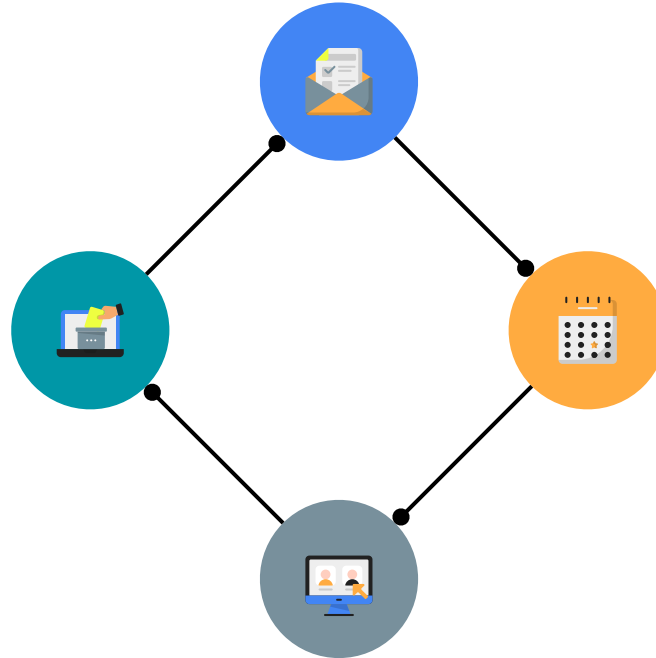
MAIL YOUR BALLOT BACK

No stamp? No problem. Mail your ballot back early as it must be postmarked by Tuesday, November 5, 2024.

**Track your ballot*
smcvote.org

DROP OFF YOUR BALLOT

You can drop off your voted ballot at any secure Dropbox or Vote Center. For locations check www.smcvote.org.



VOTE IN PERSON

You can vote in person at any Vote Center. In addition you can do the following:

- Register to vote
- Vote with an accessible voting machine
- Get language and disability assistance

REMOTE ACCESSIBLE VOTE BY MAIL (RAVBM) SYSTEM

Mark your ballot and print it from your computer. Mail or take your voted ballot to a Ballot Drop Box or Vote Center.

WHEN to vote?



Tuesday, October 8

Three Vote Centers will open.



Tuesday, November 5

All Vote Centers will be open from
7 am - 8 pm. Last day to vote.
Vote-by-mail ballots must be
postmarked by this day.

**Saturday, November 2 –
Monday, November 4**

All vote centers will be open 9 am
to 5 pm.





Common Reasons Ballots Are Rejected



1. Ballots are received after the deadline. All ballots must be postmarked by November 5, 2024 and must be received no later than seven days after Election Day.
2. Signature does not match your registration card.
3. Ballot is not signed.

Voter's Declaration

- I am a resident of and a voter in the precinct, and I am the person whose name appears on this envelope.
- I have not applied, and do not intend to apply for a Vote By Mail ballot from any other jurisdiction for this same election.
- I declare under penalty of perjury that this is true to the best of my knowledge and belief.

If a voter is unable to sign, the voter can make a mark witnessed by one person.

Witness,
sign here _____

Voter: Sign here. Do not print.
You must sign in your own handwriting for the ballot to count.
Signature must match voter registration record.

Signature of voter (Power of Attorney not acceptable) (Print Name)

Date | M | M | D | D | Y | Y | Y | Y |

Address as registered in Los Angeles County
(Mailing/P.O. Box not acceptable)

EN 9/14/2021

Election Education Toolkit

WHY vote?

YOUR VOTE COUNTS

Voting is a way to have your voice heard.

All votes matter. In 1983 East Palo Alto was incorporated as a city with just 15 voters. In 2005, San Mateo Measure Y passed by 43 votes. Some city council races have been decided by just 20 votes! Your vote can sway an election.

HOW will I vote: mail or in person?

MAIL YOUR POSTAGE-PAID BALLOT BACK
No ballot? No problem. Mail your ballot back with a return receipt to be postmarked by Election Day, Tuesday, June 7.

DROP OFF YOUR BALLOT
You can drop off your mail ballot at any Drive-Through or Vote Center.


VOTE IN PERSON
You can vote in person at any Vote Center. In addition, you can do the following:
- Drop off your completed ballot
- Use an in-person voting machine
- Register to vote
- Get language assistance

REMOTE ACCESSIBLE VOTE BY MAIL (RAVBM)
Place your mail ballot in a Ballot Drop Box or Vote Center.

For locations, dates & times go to smcvote.org




Do you have a voting plan?



WHEN will I vote?

HOW will I vote?

WHERE will I go to vote or drop off my ballot?



WHEN to vote?

Important Dates

Mon, May 9
You can begin voting at any Vote Center or mail your ballot.

Mon, May 9
Three vote centers will open.

Sat, May 28
Nine vote centers will open.



Sat, June 4 – Tues, June 7
All forty-five vote centers will be open.

Tues, June 7
Last day to vote. If a vote by mail ballot is postmarked on or before Tues, June 7 and is received by the County Elections officials by Tues, June 7, it will be counted.


For more information visit: thrivealliance.org

Track your ballot & find additional language resources by visiting smcvote.org

To register to vote or check registration status visit register tovote.ca.gov





WHO is eligible to vote?




- A United States citizen and a resident of California
- 18 years old or older on Election Day
- Not currently serving a state or federal prison term for the conviction of a felony
- Not currently found mentally incompetent to vote by a court

WHAT will be on my ballot?



A Ballot Will Be Mailed to All Registered Voters.

For non-partisan information about candidates, ballot measures, and propositions visit votersedge.org




- 3-fold with Basics
- Stickers
- FAQs
- Bookmarks
- Voter Registration Forms
- One Pager
- Poster

Healthy Democracy

Voter Engagement Brainstorm



Wednesday, September 18, 10:00 - 12:30 pm

In-Person

CANDIDATE FORUM

SAN MATEO COUNTY BOARD OF SUPERVISORS, DISTRICT 4



Antonio Lopez



Lisa Gauthier

Monday, September 23, 6:00 - 7:30 pm, In-Person

Register: thrivealliance.org





VOTER EDUCATION & OUTREACH ADVISORY COMMITTEE

VEOAC

Wed, October 16, 10:00 - 11:00 am
In-Person



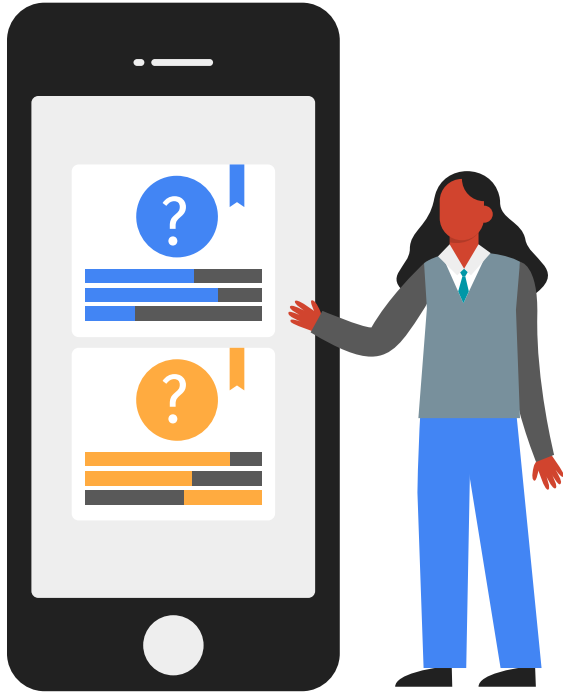
OFFICE OF MARK CHURCH
ASSESSOR-COUNTY CLERK-RECORDER &
CHIEF ELECTIONS OFFICER
COUNTY OF SAN MATEO



Thrive[®] Policy & Advocacy

SAN FRANCISCO
PENINSULA | PEOPLE
POWER

Thank You



Questions?

Email me: yajaira@thrivealliance.org

Website: thrivealliance.org

Learn More:

vote411.org

&

smcvote.gov