



Kimley»»Horn

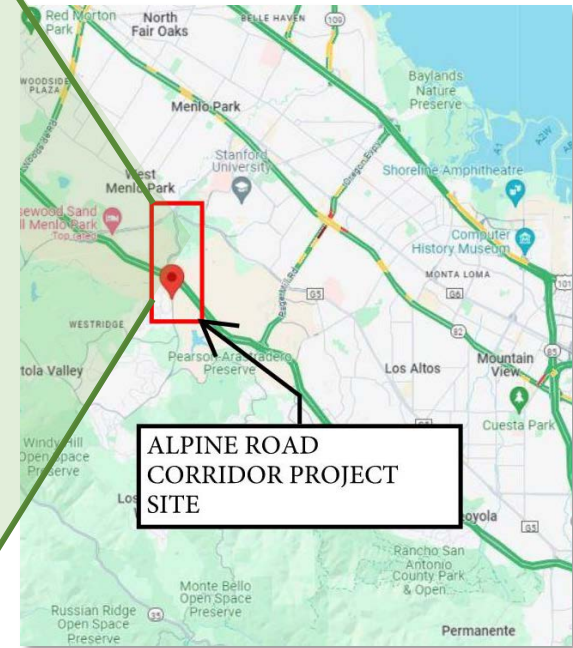
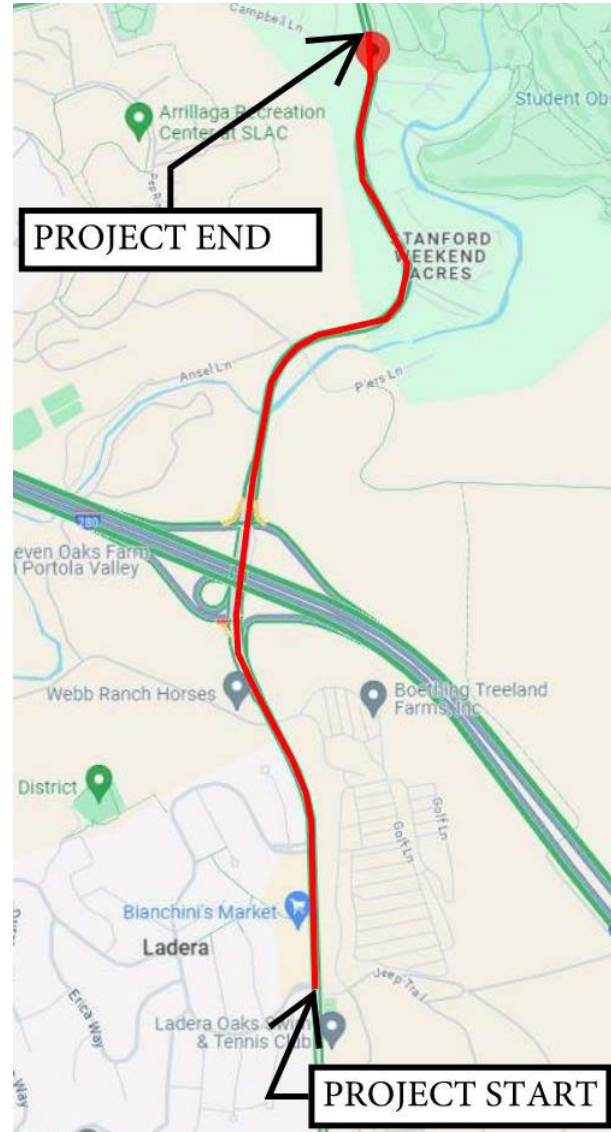
# Alpine Road Corridor Project San Mateo County

- Public Outreach Meeting # 1
- Caltrans EA 1Q710

October 16, 2024

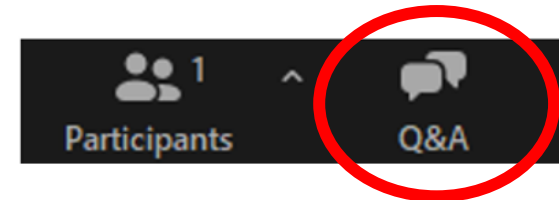
# 2. Agenda

-  Meeting Guidelines
-  Introduction
-  Project Overview and Timeline
-  Proposed Improvements
-  Questions
-  Open House & Talk with Team







## 3. Meeting Guidelines

- **This meeting is being recorded** and will be posted on the County's website for future viewing. Please be respectful and refrain from the use of profanity.
- Time for questions and comments at the end of the presentation. Please speak into the microphone for the recording. You will have **up to two minutes to speak** so that everyone who wants to speak gets the opportunity.
- Online attendees can use the Q&A feature, located at the bottom of your Zoom screen.
- If calling from a phone line, dial \*9 to raise your hand and the moderator will allow you to come off mute to ask your question or share your comment.
- Can also submit via comment cards, the project website, and the online survey.



## 4. Partner Key Roles

AGENCY/CONSULTANT	ROLE	KEY STAFF
 <p><b>San Mateo County</b></p>	Project Sponsor	<b>Tim Cheng</b> – Project Manager
 <p><b>San Mateo County Transportation Authority</b></p>	Project Funding and Implementation Agency	<b>Liliana Price</b> – Agency Project Manager
 <p><b>Caltrans</b></p>	State Highway Owner, Project Oversight, CEQA &NEPA Lead	<b>Fitsum Worrede</b> – Project Manager
 <p><b>Kimley»Horn</b></p>	Prime Consultant	<b>Prasanna Muthireddy</b> – Project Manager <b>Brandi Childress</b> - Outreach Lead and Meeting Facilitator

## 5. Meeting Purpose



Solicit input from the community at an early stage

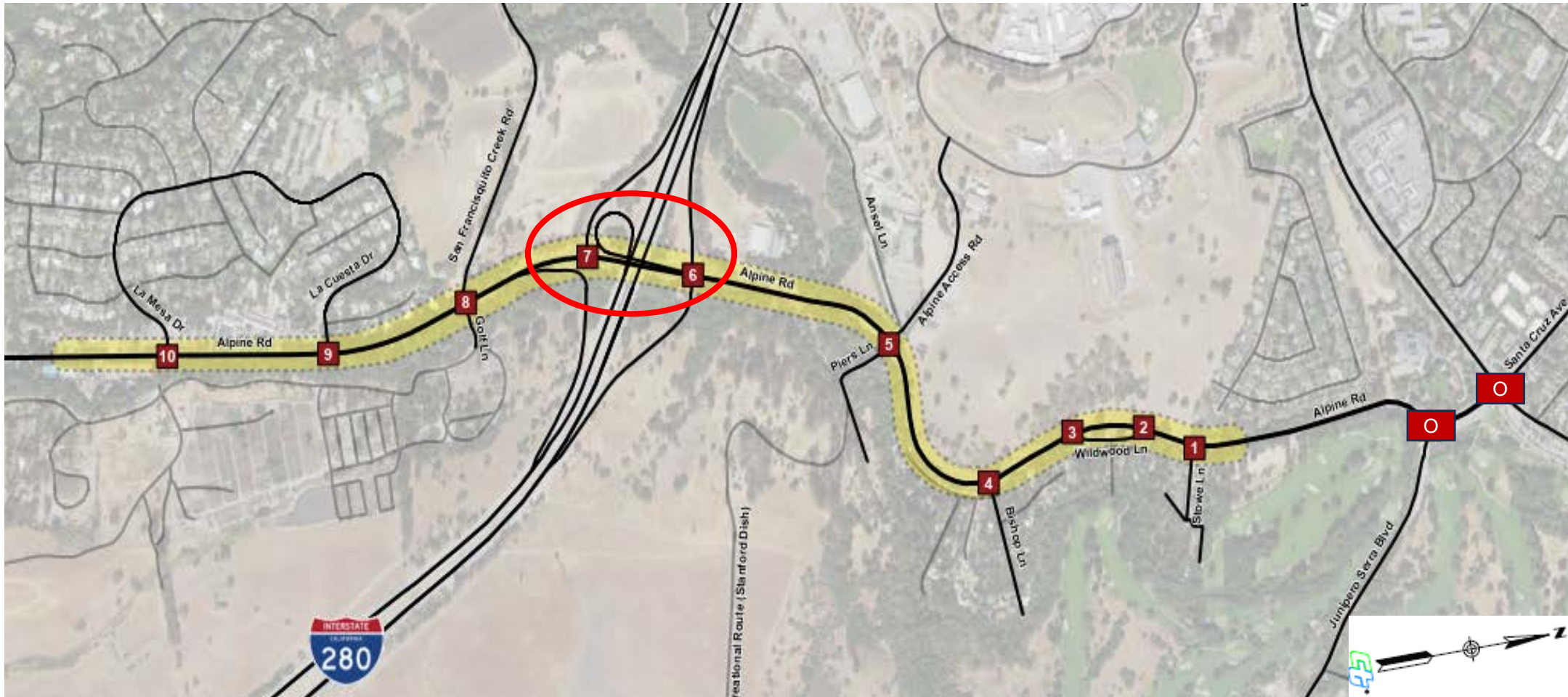


Gain current perspectives on project issues and proposed solutions



Explain project delivery process and how community input will inform project development

# 6. Project Overview



○ = IN CALTRANS RIGHT OF WAY    **XX** = STUDY INTERSECTIONS    **○** = INTERSECTIONS INCLUDED IN TRAFFIC MODEL

## 7. Project Overview: Existing Conditions

- Congestion due to regional and local traffic.
- Congestion adversely affects local circulation, access to Alpine Road
- Need for improved bicycle, pedestrian and transit facilities



*Congestion at I-280 Ramps : Regional and Local Traffic*






*Access issues to Alpine Road from Side Streets (corner sight distance and no gaps in traffic)*



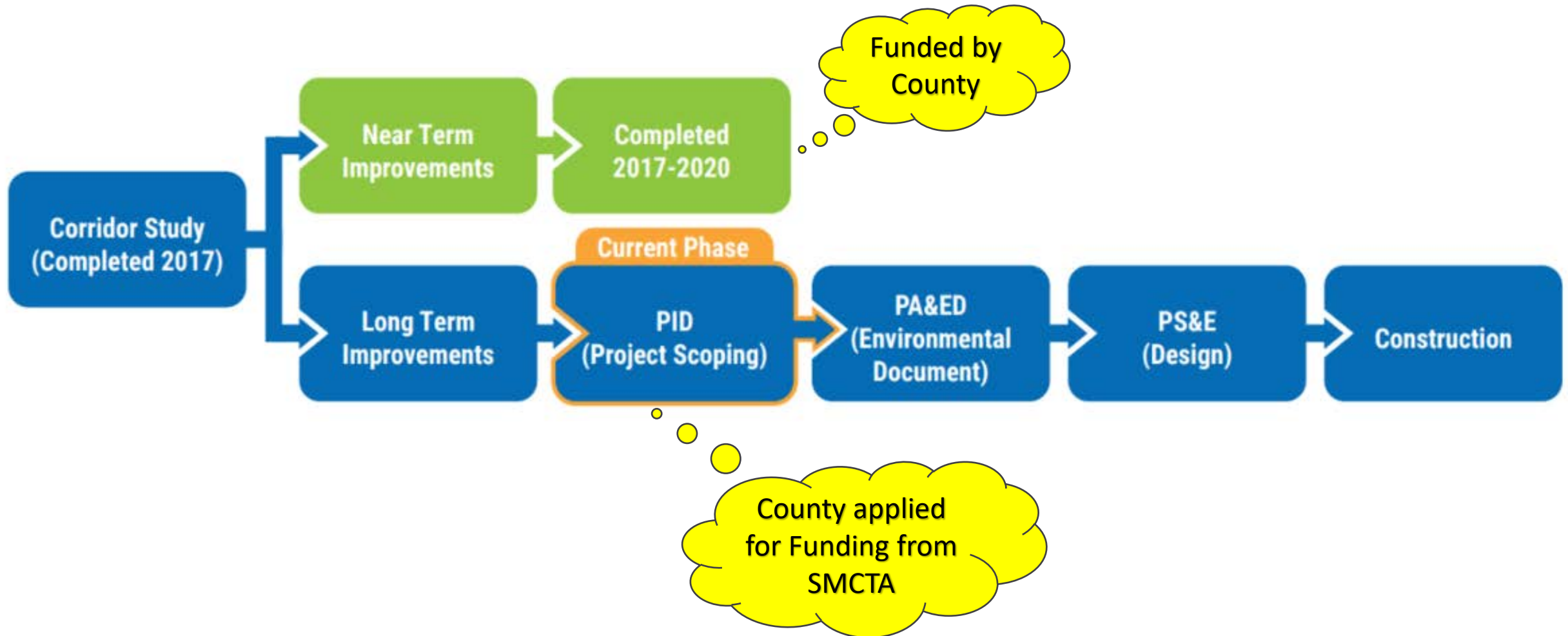
*Upgrade and enhance ADA crossings for bicycle, pedestrian and transit users*

## 8. Project Overview: Goals

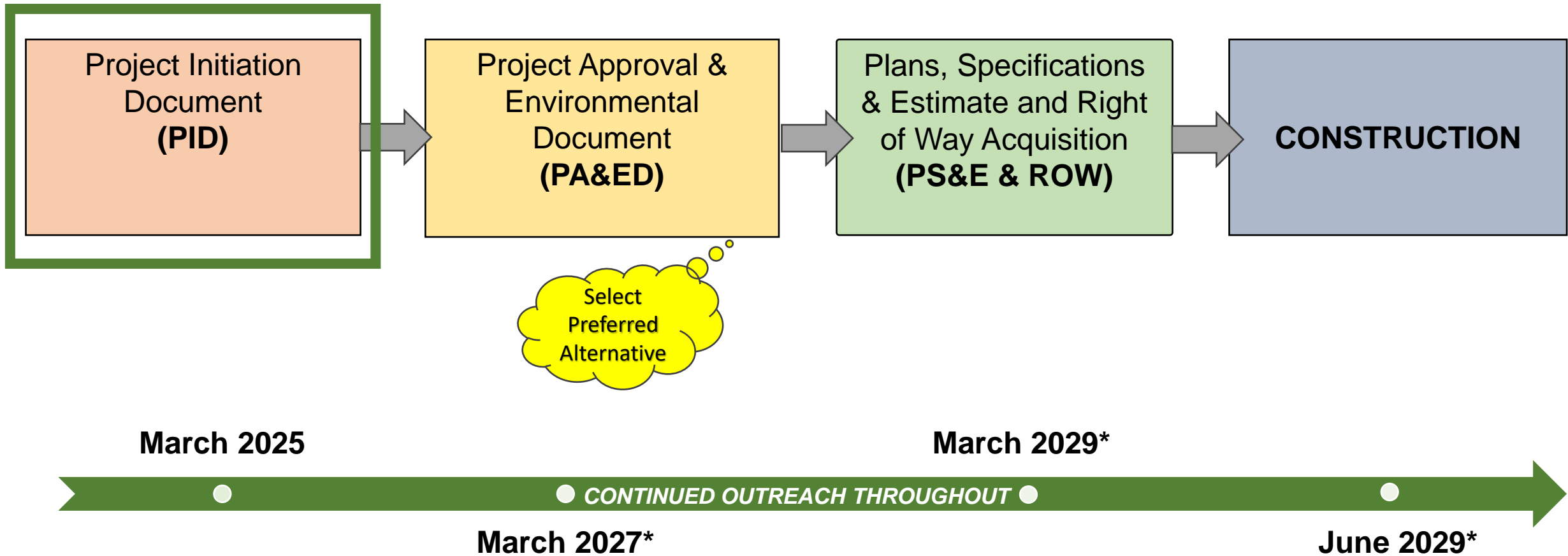
-  Improve bicycle and pedestrian access, safety and connectivity to transit, housing, commercial center, and other destinations within project limits
-  Improve intersection operations along Alpine Road within the project limits
-  Improve access to Alpine Road from the side streets.



# 9. Project Overview: History



# 10. Caltrans Project Approval Process: Milestones and Timeline



\* SUBJECT TO COMPLETION OF PREVIOUS PHASE AND FUNDING

# 11. Project Alternatives: Common Improvements

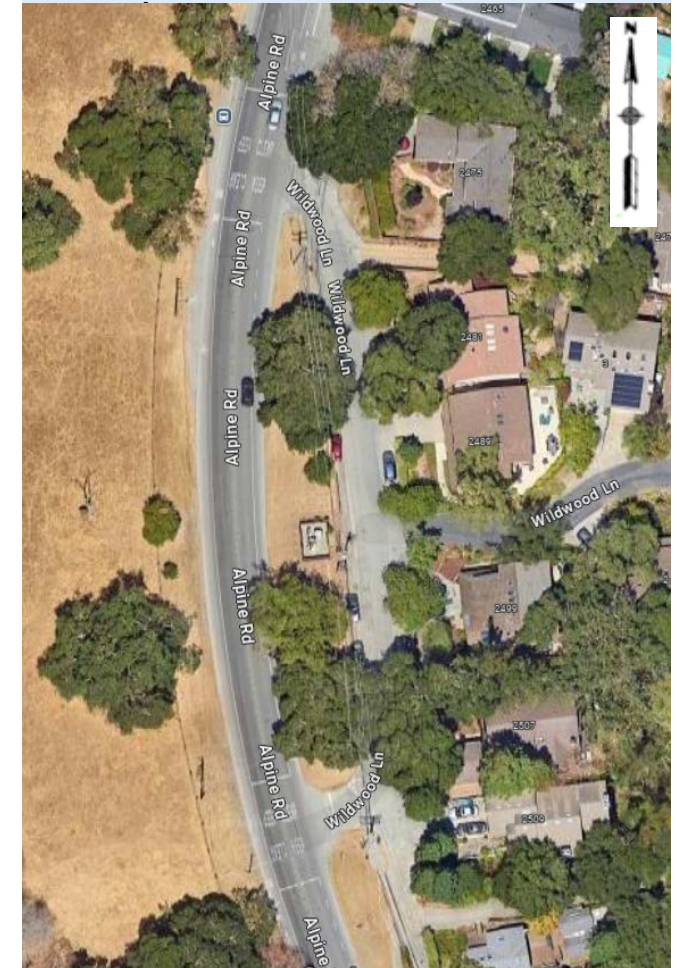
## CURRENTLY IN CONSIDERATION:

- Safer pedestrian, bicycle and transit crossings
- ADA Compliance
- Center - Receiving lanes
- Traffic Calming Measures
- Buffer Separated Bike Lanes where Feasible
- Improve Bike/Trail crossing at SB On-Ramp

ADA Compliance



Center receiving lanes at Wildwood



Bike/Trail Crossing at SB On-Ramp



Pedestrian activated HAWK  
(High-Intensity Activated crosswalk)



Improved Ped/Bike/Transit  
Crossings



# 12. Project Alternatives: Common Improvements

## TO BE DETERMINED / NEED INPUT:

- *Parking at Stanford Dish Trail?*
- *Improvements to Alpine Trail?*
- *Bus Stops?*
- *Wildwood Lane Cul-De-Sac?*

*Improvements to Alpine Trail?*



*Bus Stop and Crossing ; Cul-de-sac at Wildwood*



*Parking Improvements at Dish Trail*



*Northbound Bus Stop at Stowe Lane?*

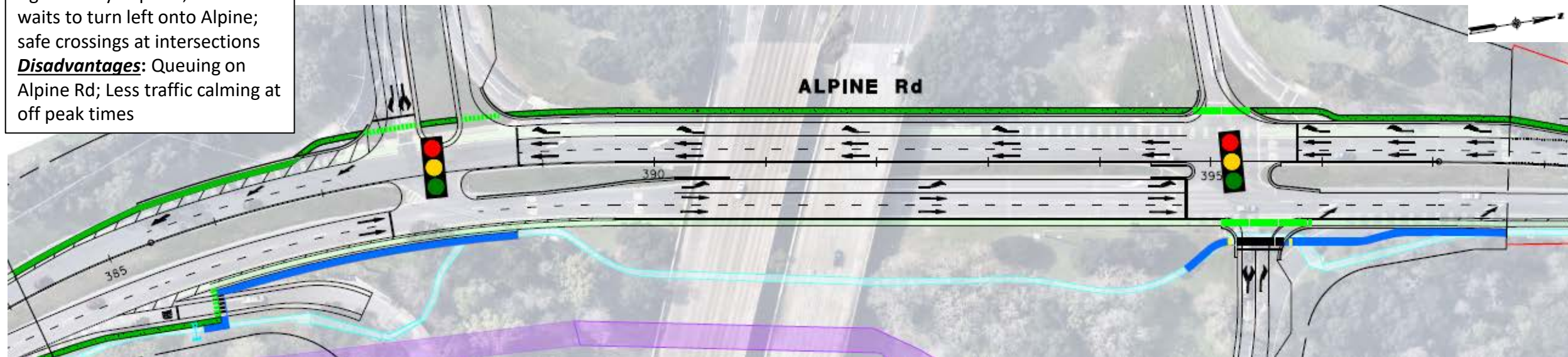


# 13. Alternative 1: Signalized Intersection Control

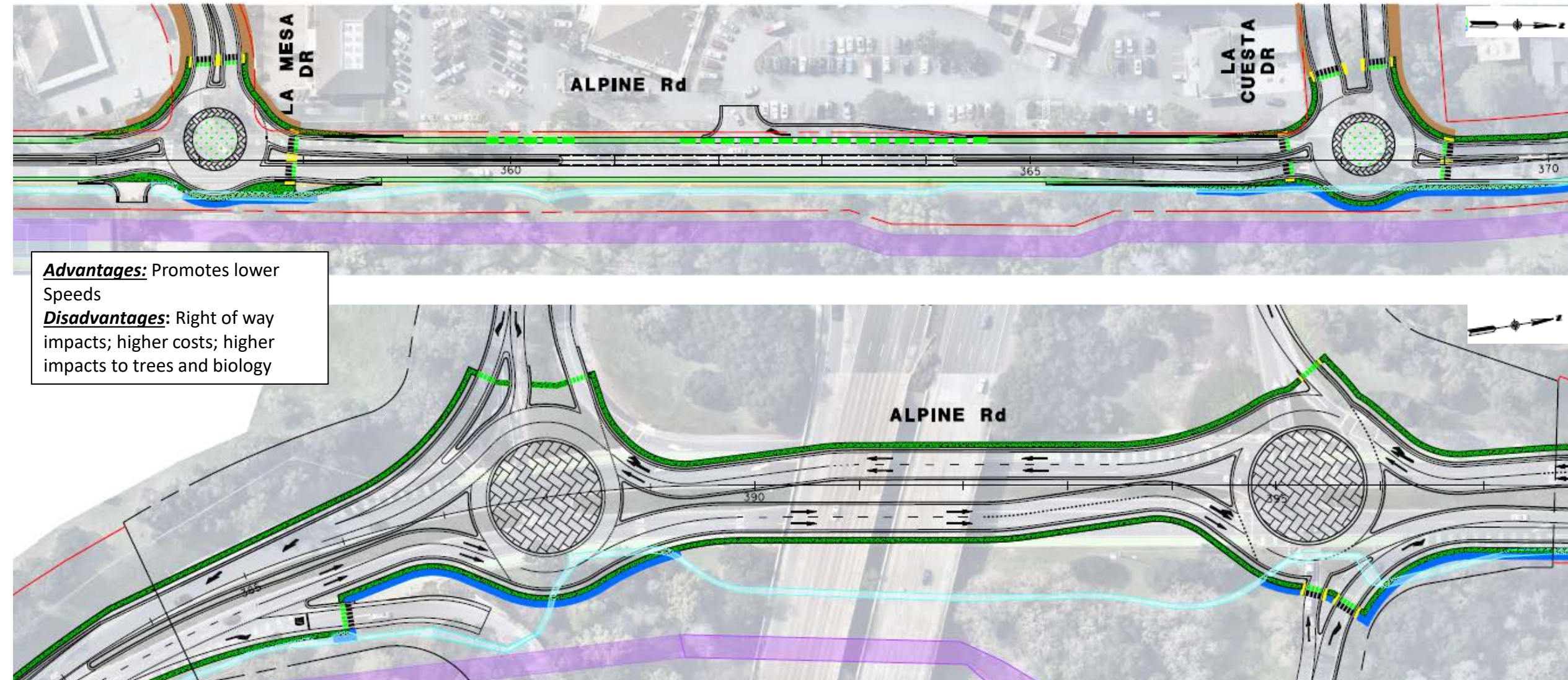


**Advantages:** Lower cost; Lower right of way impacts; Shorter waits to turn left onto Alpine; safe crossings at intersections

**Disadvantages:** Queuing on Alpine Rd; Less traffic calming at off peak times

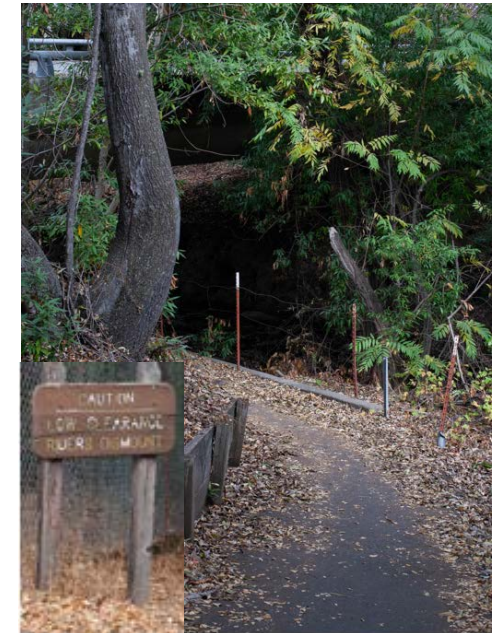


## 14. Alternative 2: Roundabout Intersection Control



## 15a. Current Traffic Analysis Scope

- ❖ Collect New Traffic Data
- ❖ Identify Scope (limits, forecast data, time windows, software, model, land use data, etc.) of traffic analysis in next phase.
- ❖ Perform Preliminary Operational Analysis with 2024 data to confirm viability of the proposed improvements.



## 15b. Current Environmental Scope

- ❖ A Preliminary Environmental Scoping Memo (PEAR) will be prepared
- ❖ PEAR will identify the level of environmental document required for CEQA/NEPA process and approval.
- ❖ PEAR will also identify scope of environmental technical studies in next Phase

# Providing Input

**COMMUNITY MEETINGS!**

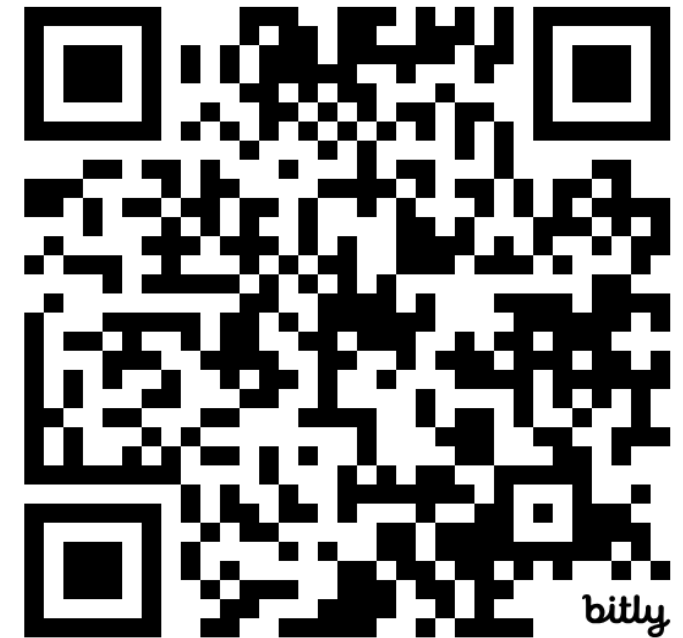
**Wednesday, Oct. 16, 2024 @ 6 p.m.**

**Wednesday, Nov. 13, 2024 @ 6 p.m.**

**EMAIL:** [DPW\\_AlpineCorridorProject@smcgov.org](mailto:DPW_AlpineCorridorProject@smcgov.org)

**WEBSITE:** <https://bit.ly/AlpineRoadPID>

**Survey will close on November 30, 2024.**





**THANK YOU**

