



# Belmont Creek Flood Management Plan

## WHAT IS THE FLOOD MANAGEMENT PLAN?

San Mateo County and the Cities of Belmont and San Carlos are collaborating on the Belmont Creek Flood Management Plan. The plan will provide a framework to restore the natural function of the watershed and protect people and places from flooding. The plan will also identify and discuss flood-resilient solutions, funding, and additional public benefits such as:



Water Quality Enhancements



Green Infrastructure



Potential for Groundwater Recharge

## WHY CREATE A FLOOD MANAGEMENT PLAN FOR BELMONT CREEK?

Flooding occurs between Old County Road and Industrial Road and continually impacts residents and businesses. The creek has been studied and analyzed for capacity deficits, erosion, and bank stability.

Today's system has capacity for the 10 year storm, which has a 10% probability of occurring any year. With community input, the Flood Management Plan is looking to protect for larger storm events.

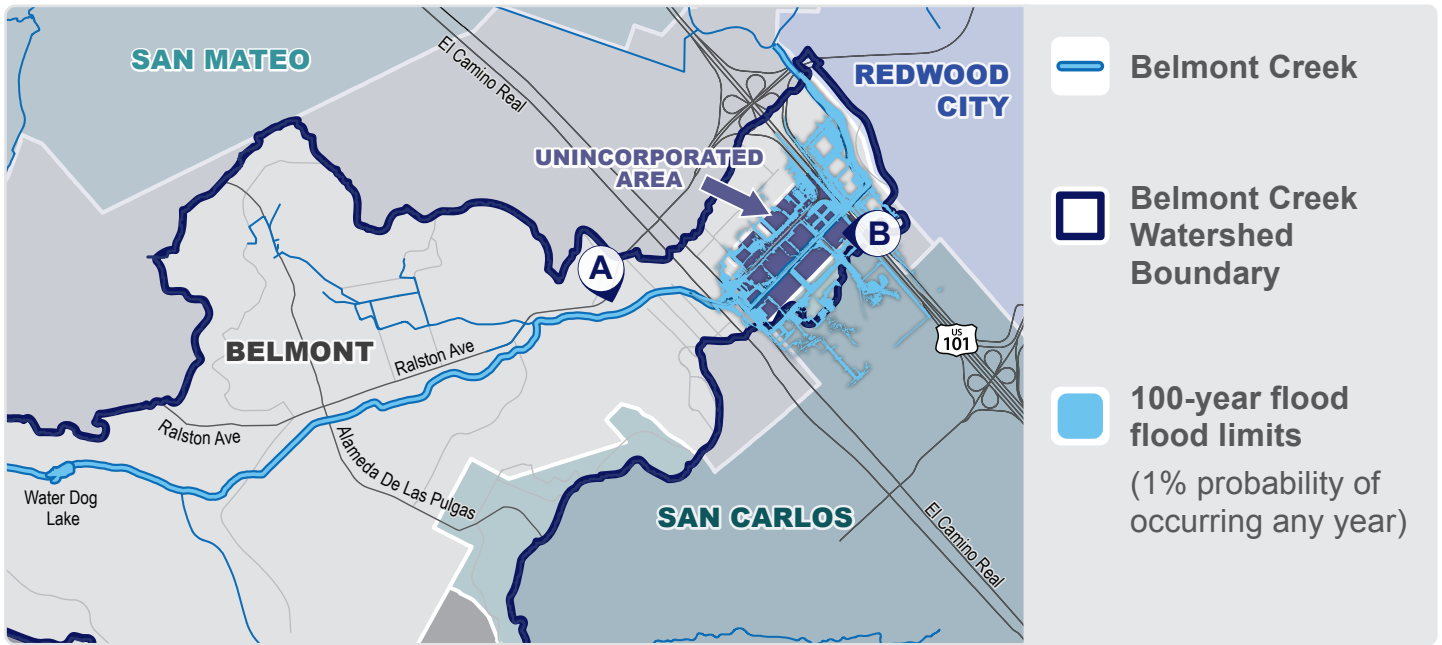
**“Each \$1 spent on mitigation saves an average of \$6 in future disaster costs”**

– Natural Hazard Mitigation Saves: 2017 Interim Report, <http://www.nibs.org/page/mitigationsaves>

Implementing multi-beneficial flood resilient solutions for larger flood events will save community millions in future storm recovery costs.



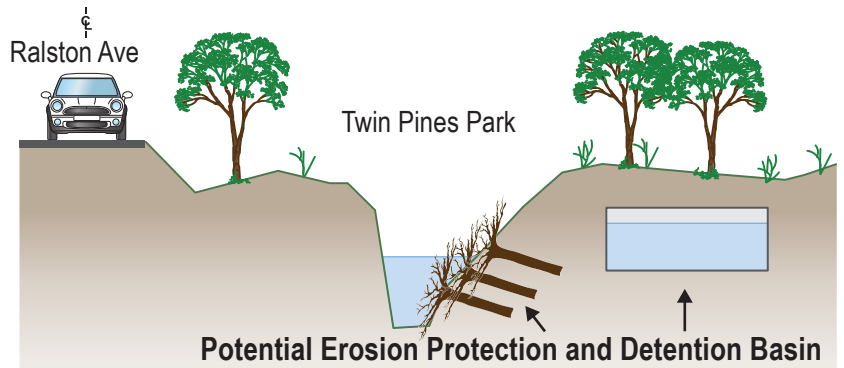
# WATERSHED AND WHERE WE FLOOD




## WHAT ARE POTENTIAL IMPROVEMENTS?

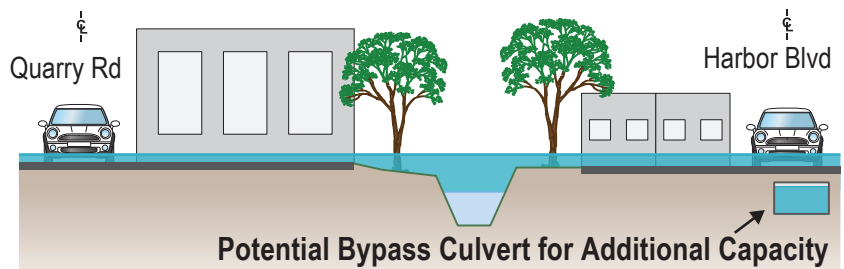


### Upper creek cross-section example



### Lower creek cross-section example

 100-year storm, which has a 1% probability of occurring any year



## PROJECT PARTNERS:



County of San Mateo



City of Belmont



City of San Carlos

## GET INVOLVED:



Attend a community meeting



Participate in a business meeting



Send comments or questions to:  
epowell@smcgov.org or (650) 599-1488

For more information visit: <https://publicworks.smcgov.org/belmont-creek-watershed-management-plan>

