

2006 ANNUAL STATISTICS

General Center Statistics:

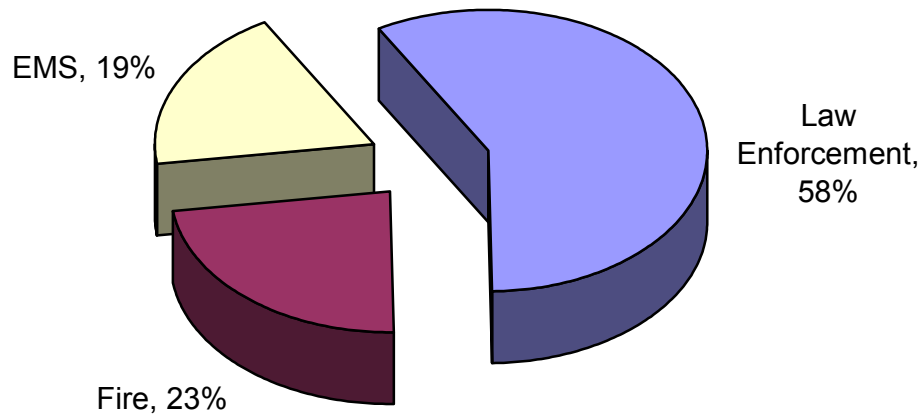
Total Messages Processed		
System	Input	Output
CAD	48,247,608	151,502,667
DBS	67,567,293	36,036,334
MSS	41,747,514	76,936,868
Total	157,562,415	264,475,869



System Statistics	
System	Total
MST Button Pushes	874,773
Sunpro/FireHouse Messages	58,717
Alpha Paging Messages	1,873,373
Web Paging Messages	76,644
CAD Faxes	11,279
HART Messages	60,779
CAD Email Messages	33,515
Zetron 25 Alerts	66,882
Zetron 26 Messages	5,099,869
ProQA Messages	132,583
RIMS Messages	657,221
Trunking Messages	2,000,594
Total Messages Processed	10,946,229

CAD Availability	99.97
MSS Availability	99.97

Incident Breakdown by Class



2006 ANNUAL STATISTICS

Incoming Telephone Statistics

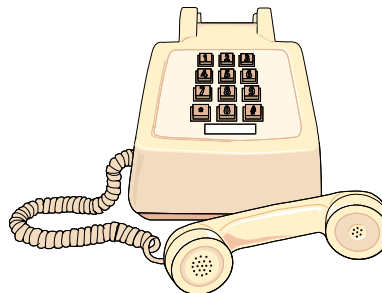
<u>Month</u>	<u>Number of Calls Fire/EMS Dispatchers</u>	<u>Number of Calls Law Dispatchers</u>	<u>Total Calls</u>
January	18624	13846	32,470
February	16135	14489	30,624
March	17523	15907	33,430
April	16819	16155	32,974
May	17925	17168	35,093
June	17857	17412	35,269
July	17255	19158	36,413
August	18704	16186	34,890
September	17537	14918	32,455
October	17869	15019	32,888
November	16691	14014	30,705
December	18783	15593	34,376
Totals	211,722	189,865	401,587

911 Calls Received:

Law Enforcement: 24,315

Fire: 5,304

EMS: 24,136



Telephone Call Summary:

Busiest day of week: Tuesday (Law)
Wednesday (Fire/EMS)

Busiest hour of day: 17:00 (Law)
18:00 (Fire/EMS)

2006 ANNUAL STATISTICS

Number of Incidents by Jurisdiction

Agency	Jan	Feb	Mar	Apr	May	Jun	Jul	Aug	Sep	Oct	Nov	Dec	Totals
DPW	423	351	416	499	593	547	679	552	537	502	401	405	1,101
EMS	3,748	3,533	3,889	3,725	3,801	3,679	3,802	3,779	3,584	3,742	3,688	4,167	40,882
ESF	322	361	356	320	336	332	400	335	340	356	352	375	4,185
PHS	273	273	307	395	512	488	584	484	467	414	322	286	4,805
SubTotal	4,171	3,884	4,305	4,224	4,394	4,226	4,481	4,331	4,121	4,244	4,089	4,572	51,042
BIF	44	53	51	35	49	70	66	76	44	53	41	49	631
CCF	386	335	333	327	369	389	331	398	297	320	342	370	4,197
CLF	68	62	58	49	61	44	60	54	49	52	54	65	676
COF	147	148	167	146	134	127	179	142	143	138	132	152	1,755
DCF	575	468	542	484	524	469	514	473	517	463	509	579	6,117
FCF	160	155	165	145	160	209	207	167	147	140	150	177	1,982
FMA	129	112	140	124	140	156	192	131	155	156	123	176	1,734
HMF	185	163	182	160	183	185	162	162	155	199	152	237	2,125
MLF	173	181	211	170	156	159	162	183	172	193	149	187	2,096
MNF	667	553	603	596	666	703	632	648	660	630	642	730	7,730
PIF	238	203	225	190	220	171	181	206	195	229	211	239	2,508
RCF	668	573	671	645	714	648	685	705	604	671	642	745	7,971
SBF	235	262	292	239	235	259	279	264	279	297	261	261	3,163
SCF	349	350	351	337	341	364	334	352	342	348	412	422	4,302
SMF	652	648	702	666	718	647	709	734	654	681	655	836	8,302
SOF	399	449	449	405	436	422	503	452	413	423	438	523	5,312
WOF	166	137	129	129	138	135	156	152	144	126	122	148	1,682
SubTotal	5,241	4,852	5,271	4,847	5,244	5,157	5,352	5,299	4,970	5,119	5,035	5,896	62,283
BRD	483	505	523	542	617	571	568	588	588	648	599	560	6,792
EPA	2,912	2,616	2,751	2,812	3,313	3,508	3,601	3,253	2,936	3,055	2,600	2,898	36,255
HMB	1,053	1,019	1,105	1,233	1,235	1,159	1,123	1,029	921	1,060	810	850	12,597
LMA	1,251	1,062	1,163	1,067	1,217	1,293	990	1,059	968	1,011	882	986	12,949
MLB	43	1,755	1,757	1,689	1,829	1,734	1,975	1,938	1,754	1,775	1,621	1,663	19,533
SOS	4,730	4,767	4,789	4,834	5,017	4,539	5,147	4,749	4,621	4,785	4,547	4,479	57,004
SPL	327	143	165	238	335	818	928	1,182	457	325	325	971	6,214
TRA	452	445	453	419	659	609	450	586	496	565	523	512	6,169
SubTotal	11,251	12,312	12,706	12,834	14,222	14,231	14,782	14,384	12,741	13,224	11,907	12,919	157,513
Totals	20,663	21,048	22,282	21,905	23,860	23,614	24,615	24,014	21,832	22,587	21,031	23,387	270,838

2006 ANNUAL STATISTICS

EMS Specific Statistics:

Number of Hospital Transports	
Peninsula	6,388
Kaiser South City	3,931
Stanford	3,537
Seton	3,510
Kaiser Redwood City	2,751
County General	2,746
Sequoia	2,398
San Francisco General	553
VA Palo Alto	279
Mills	273
Out of County	103
County General Psychiatric	647
Seton Coastside	40
First Chance North	1
Peninsula Psychiatric	346
Total	27,503

Number of Helicopter Dispatches	
LifeFlight	79
Calstar	27

Number of MCI's	
Level 1	15
Level 2	3



EMD Pre-Arrival Statistics:	
Sequence	Count
Airway / Arrest - Infant	24
Airway / Arrest - Child	51
Airway / Arrest - Adult	1,810
Choking – Infant, Child, Adult	192
Childbirth	31
Tracheotomy Airway / Arrest	0
AED Support	2
Total sequences provided	2,110

2006 ANNUAL STATISTICS

24 Hour Unit Responses	
Unit	Total Runs
301	4,085
107	3,996
R63	2,194
403	2,882
R61	1,940
440	1,572

Top 20 VSU Responses	
Unit	Total Runs
263	1,677
265	1,588
440	1,572
160	1,568
262	1,529
264	1,470
108	1,466
261	1,443
368	1,438
114	1,308
112	1,299
166	1,271
367	1,261
370	1,239
111	1,191
284	1,163
281	1,071
189	1,058
285	1,009
266	998

Special Unit Responses	
Unit	Total Runs
510	1,594
511	34
512	1,580



Chute Times	
Unit	Avg. Time
189	0:36
111	0:40
166	0:40
187	0:40
266	0:40
281	0:40
284	0:40
283	0:41
287	0:41
114	0:42
282	0:42
285	0:42
368	0:42
369	0:42
370	0:42
186	0:43
261	0:43
286	0:43
160	0:44
214	0:44
264	0:44
112	0:45
208	0:45
212	0:45
265	0:45
301	0:45
511	0:45
188	0:46
211	0:47
262	0:47
263	0:47
367	0:48
108	0:49
165	0:51
107	0:52
510	0:53
512	0:55
403	0:57
440	1:03
R63	1:10
R61	1:11

2006 ANNUAL STATISTICS

Fire Specific Statistics:

Battalion Chief Responses	
Unit	Total Runs
BC3	1,077
BC1	912
BC4	843
BC17	651
BC5	573
BC6	528
BC8	511
BC2	485
BC9	472
BC16	357
BC20	339
BC10	302
BC18	265
BC11	143
BC19	97
BC15	71
BC13	51
BC12	6
BC106	3
BC10A	3
BC120	2
BC103	1
BC118	1
BC17A	1
BC1C	1
BC20B	1
BC5A	1
BC9A	1

Truck Responses	
Unit	Total Runs
PT9	1,651
PT13	1,445
PQ62	1,084
PT1	1,040
PT51	976
T95	850
PT21	796
PT34	767
PQ65	728
T28	709
T21	200
PT14	136
T85	108
Q65	76
T9	44
T51	17
Q62	5
PT28	4
T14	3
T128	2

Fire Buffs Responses	
Unit	Total Runs
SUP14	17
SUP20	17
SUP23	7
SUP65	3
SUP17	1

Top 10 Fire Chief Responses	
Unit	Total Runs
CH20B	18
CH17A	15
CH1A	15
CH20C	15
CH20A	8
CH3	8
CH5A	7
CH16	6
CH6	6
CH8	6

IDT Responses	
Unit	Total Runs
COM32	18
COM47	12
COM1	10
COM59	10
COM81	8
COM80	5
COM61	1

2006 ANNUAL STATISTICS

Miscellaneous Units	
Unit	Total Runs
R57	207
RS7	197
R56	78
HM30	48
WT57	27
BS9	22
FMC	21
BS61	18
BS17	16
WT8	12
AB1	11
WT56	9
HM31	5
WT58	3
BOAT28	2
BOAT11	1

Prevention Responses	
Unit	Total Runs
PR3A	50
PR3	44
PR3B	33
PR4	33
PR5B	28
PR8D	26
PR5D	25
PR8E	25

EMS Coordinator Responses	
Unit	Total Runs
MED2	59
MED19	49
MED20	34
MED11	16
MED17	10
MED8	10

Training Coordinator	
Unit	Total Runs
TO3	25
TO20	9
TO20A	8
TO5	8
TO17	5
TO9	5
TO11	3



2006 ANNUAL STATISTICS

Total Engine Response	
Unit	Total Runs
E10	2,225
E2	2,150
E51	1,967
E9	1,920
E37	1,906
E24	1,860
E92	1,818
E63	1,760
E34	1,632
E94	1,613
E14	1,606
E26	1,569
E1	1,560
E23	1,529
E95	1,508
E61	1,494
E91	1,411
E71	1,384
E21	1,371
E11	1,269
E40	1,268
E15	1,223
E77	1,211
E52	1,207
E6	1,204
E72	1,184
E4	1,097
E25	1,080
E29	1,070
E36	1,061
E64	1,046
E12	921
E5	889
E3	884
E28	820
E7	775
E20	763
E32	747
E41	734
E38	711
E35	691
E16	683

Total Engine Response	
Unit	Total Runs
E8	675
E81	657
E86	642
E18	603
E17	596
E93	568
E27	551
E44	508
E33	469
E19	405
E58	381
E217	340
E59	308
BE16	261
BE57	201
E13	180
BE64	144
BE56	120
BE55	65
E62	64
E65	64
BE85	61
BE357	60
BE217	56
BE63	50
BE14	44
BE15	42
BE356	39
BE285	25
BE17	23
E85	21

2006 ANNUAL STATISTICS

Responses by District	
District	Count
FS09	2,707
FS10	2,592
FS02	2,466
FS51	2,067
FS37	1,880
FS92	1,866
FS24	1,786
FS26	1,770
FS63	1,697
FS21	1,631
FS23	1,576
FS34	1,539
FS01	1,380
FS94	1,377
FS11	1,375
FS61	1,368
FS14	1,346
FS13	1,328
FS40	1,278
FS91	1,239
FS95	1,238
FS71	1,235
FS72	1,150
FS15	1,131
FS06	1,109
FS28	1,070
FS52	1,017
FS36	963
FS62	925
FS29	907
FS64	871
FS77	864
FS04	850
FS25	815
FS20	802
FS35	693
FS07	680
FS08	674
FS86	674
FS32	645
FS81	626
FS05	587
FS12	566

Responses by District	
District	Count
FS65	536
FS03	524
FS41	506
FS18	484
FS16	472
FS93	471
FS27	444
FS38	389
FS44	383
FS17	352
FS33	332
FS58	243
FS59	227
FS31	172
FS57	167
FS19	160
FS56	92
FS55	74



2006 ANNUAL STATISTICS

Best Chute Times	
Unit	Avg. Time
E41	00:59
PQ62	01:00
E40	01:03
BC3	01:04
E81	01:06
E10	01:08
E63	01:08
E8	01:11
BC5	01:12
E18	01:12
E61	01:12
E34	01:15
E35	01:16
E72	01:16
E94	01:16
E36	01:17
E44	01:17
E91	01:17
BC20	01:18
E7	01:18
BC17	01:19
E64	01:19
E2	01:21
E92	01:21
E19	01:22
E95	01:22
E16	01:23
E23	01:23
E24	01:23
E28	01:23
E33	01:23
E9	01:23
PT9	01:23
E12	01:24
BC1	01:25
BC9	01:25
E77	01:25
BE16	01:26
E21	01:26
E37	01:26

Average County-wide chute time is 1:21

Worst Chute Times	
Unit	Avg. Time
T85	03:32
R57	02:58
BE85	02:51
E58	02:51
E86	02:45
PR4	02:38
PAF	02:27
BC11	02:17
E59	02:13
T21	02:07
SFE33	02:00
BE57	01:58
BE217	01:53
PT51	01:52
E93	01:51
E52	01:49
E27	01:44
E65	01:44
BC18	01:43
E51	01:42
T28	01:42
BC10	01:40
E17	01:40
BE14	01:39
E15	01:39
Q65	01:39
E25	01:37
E5	01:37
PT1	01:37
E4	01:36
PT21	01:36
PQ65	01:34
E14	01:33
PT34	01:33
E1	01:32
BC6	01:31
RS7	01:31
E217	01:30
E29	01:30
E3	01:30

Average County-wide chute time is 1:21

2006 ANNUAL STATISTICS

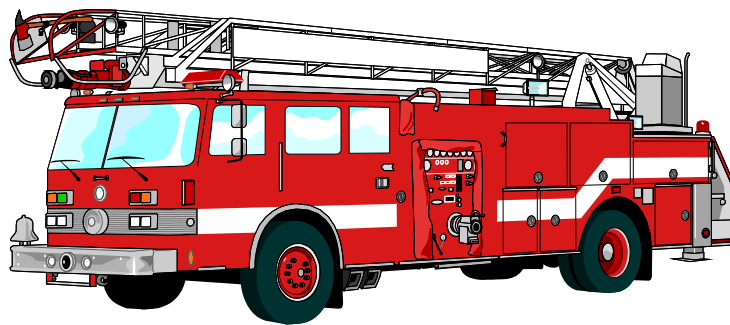
Most Runs after 2200 hrs	
Unit	Total Dispatches
510	1,044
301	750
107	596
189	580
283	547
281	508
282	500
188	464
285	437
E10	431
369	425
187	422
E2	415
R63	410
284	391
403	386
512	376
186	370
E24	367
E92	362
E51	324
E37	313
R61	297
E63	297
E26	293
E9	286
ADV	279
E94	264
E91	263
E14	262
E11	247
E95	245
E34	239
E61	235
E23	230
E71	225
440	222
E1	221
E52	220
E15	205
PT13	204
E72	201



2006 ANNUAL STATISTICS

Number of Incidents By Alarm Level By Group

GROUP	1st	2nd	3rd	4th	5th	6th	7th	8th	9th	Total
BIF	641		1							642
CCF	4,188	1	1							4,190
CLF	674									674
COF	1,726									1,726
DCF	6,077	10								6,087
FCF	1,975									1,975
HMF	2,125	2								2,127
IAF	70									70
MLF	2,084	1								2,085
MNF	7,702	4								7,706
PAF	6									6
PIF	2,502	2								2,504
RCF	7,966	10	1							7,977
SBF	3,159	3								3,162
SCC	2									2
SCF	4,287	3	1							4,291
SFF	5									5
SMF	8,295	6	3							8,304
SOF	5,295	4								5,299
UNK	1,777									1,777
WOF	1,673	1								1,674
TOTAL	62,229	47	7							62,283

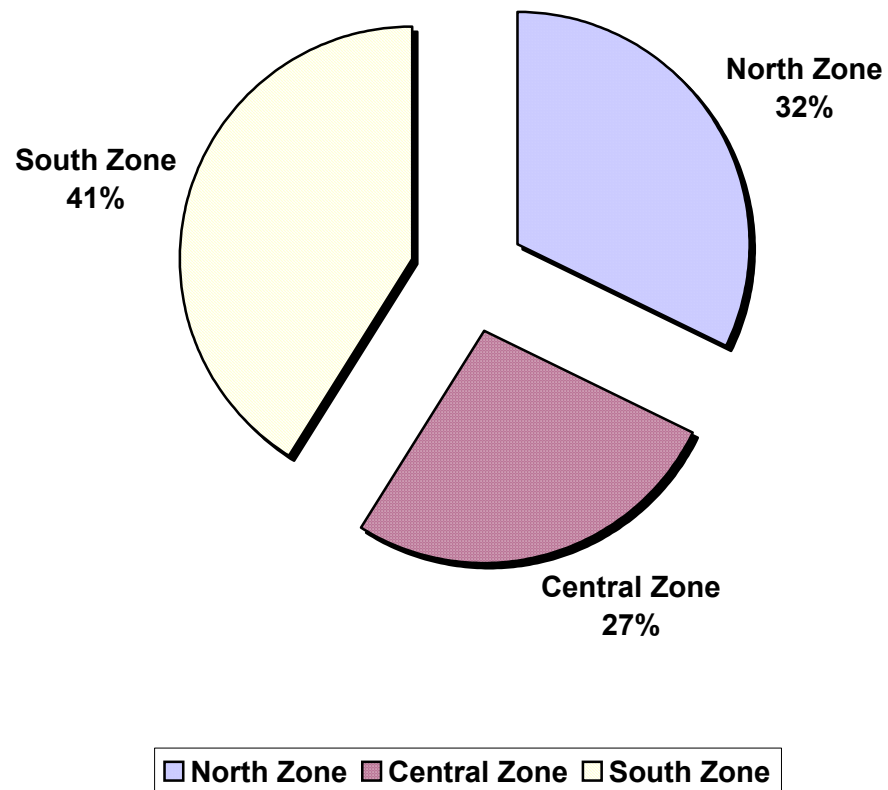


2006 ANNUAL STATISTICS

Number of Incidents by Fire Jurisdiction													
Agency	Jan	Feb	Mar	Apr	May	Jun	Jul	Aug	Sep	Oct	Nov	Dec	Totals
BIF	44	53	51	35	49	70	66	76	44	53	41	49	631
CCF	386	335	333	327	369	389	331	398	297	320	342	370	4,197
CLF	68	62	58	49	61	44	60	54	49	52	54	65	676
COF	147	148	167	146	134	127	179	142	143	138	132	152	1,755
DCF	575	468	542	484	524	469	514	473	517	463	509	579	6,117
FCF	160	155	165	145	160	209	207	167	147	140	150	177	1,982
FMA	129	112	140	124	140	156	192	131	155	156	123	176	1,734
HMF	185	163	182	160	183	185	162	162	155	199	152	237	2,125
MLF	173	181	211	170	156	159	162	183	172	193	149	187	2,096
MNF	667	553	603	596	666	703	632	648	660	630	642	730	7,730
PIF	238	203	225	190	220	171	181	206	195	229	211	239	2,508
RCF	668	573	671	645	714	648	685	705	604	671	642	745	7,971
SBF	235	262	292	239	235	259	279	264	279	297	261	261	3,163
SCF	349	350	351	337	341	364	334	352	342	348	412	422	4,302
SMF	652	648	702	666	718	647	709	734	654	681	655	836	8,302
SOF	399	449	449	405	436	422	503	452	413	423	438	523	5,312
WOF	166	137	129	129	138	135	156	152	144	126	122	148	1,682
SubTotal	5,241	4,852	5,271	4,847	5,244	5,157	5,352	5,299	4,970	5,119	5,035	5,896	62,283
Totals	5,241	4,852	5,271	4,847	5,244	5,157	5,352	5,299	4,970	5,119	5,035	5,896	62,283

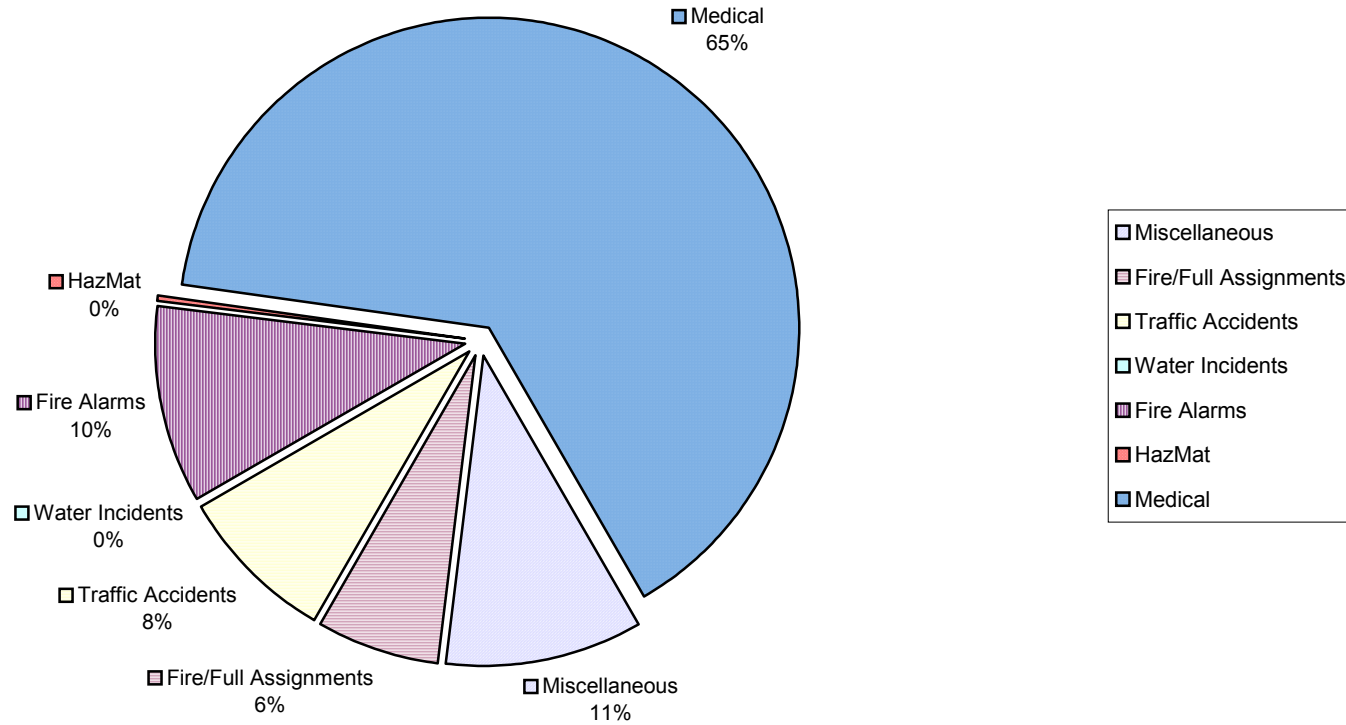
2006 ANNUAL STATISTICS

Fire Incidents by Zone for Year 2006



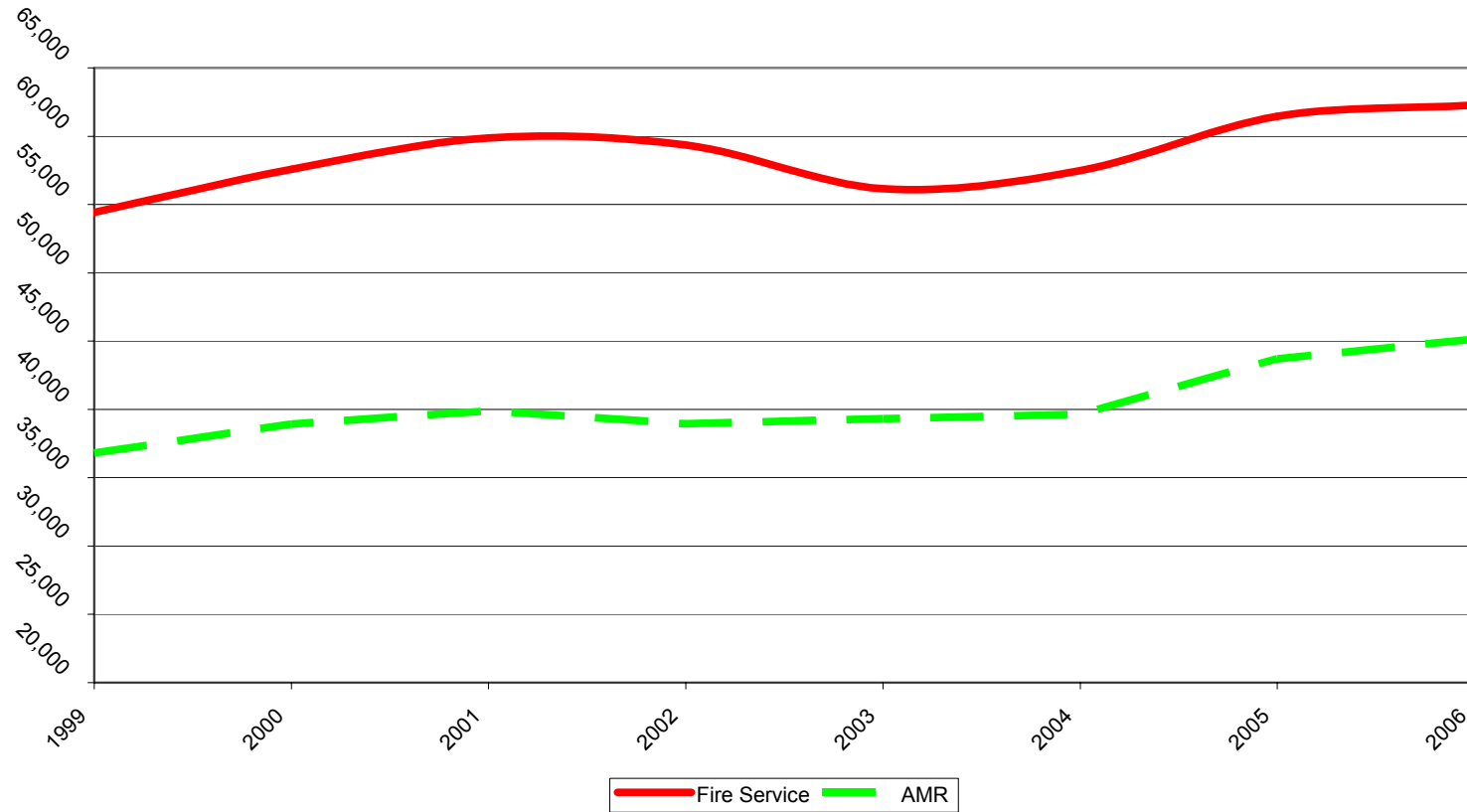
2006 ANNUAL STATISTICS

Fire Incident Type Breakdown



2006 ANNUAL STATISTICS

Fire/EMS Call Volume Comparison



2006 ANNUAL STATISTICS

Law Enforcement Specific Statistics:

Number of CLETS/AWS Inquiries by agency:	
Agency	Count
Broadmoor Police:	14,905
East Palo Alto Police:	45,220
Half Moon Bay Police:	12,249
Law Mutual Aid:	38,184
Millbrae Police:	32,844
Sheriff's Office:	193,946
Special:	23,117
Transit:	7,141
Total	367,606



CLETS SVS Statistics by Agency for 2006											
Agency	Felony Vehicle	Found Evidence Plate	Impound Vehicle	Lost Vehicle	Missing Person Vehicle	Lost Stolen Plate	Repo Vehicle	Stolen Vehicle	Towed Stored Vehicle	Two Stolen Plates	Total
Broadmoor	0	0	0	0	0	0	2	1	4	0	7
East Palo Alto	1	0	52	0	0	62	121	382	1050	0	1,668
Half Moon Bay	0	0	6	0	0	1	14	7	104	0	132
Millbrae	1	0	29	0	0	7	26	54	282	0	399
Sheriff's Office	2	0	151	1	0	86	222	695	2319	0	3,476
Totals	4	0	238	1	0	156	385	1,139	3,759	0	5,682

Total SVS Entries for year 2006: 2,601

2006 ANNUAL STATISTICS

Sheriff Beat Activity	
Beat	Total
10	873
11	15,456
20	7,697
31	5,001
32	2,494
40	1,439
60	2,007
70	9,523
80	3,947
OJ	8,567
Total	57,004

East Palo Alto Beat Activity	
Beat	Total
1	11,701
2	6,181
3	10,747
4	6,025
OJ	1,601
Total	36,255

Millbrae Beat Activity	
Beat	Total
1	4,035
2	5,395
3	4,141
4	4,124
OJ	1,838
Total	19,533

Half Moon Bay Beat Activity	
Beat	Total
1	7,087
2	4,840
OJ	670
Total	12,597

Broadmoor Police Activity	
Beat	Total
1	2,813
2	829
OJ	3,150
Total	6,792

Activity Breakdown by Source of Incident		
Agency	Citizen	Field
Sheriff's Office	30,555	26,449
East Palo Alto Police	25,319	10,936
Millbrae Police	10,920	8,613
Half Moon Bay Police	7,066	5,531
Broadmoor Police	2,613	4,179
Transit	2,556	3,613

Law Mutual Aid Incidents	
Incident Type	Total
Amber Alerts	0
Code 2000	2
Code 30	0
Code 666	68
Probation Hold Teletypes	178
Tactical Alert Phase I	48
Tactical Alert Phase II	6
Special Details	1,318

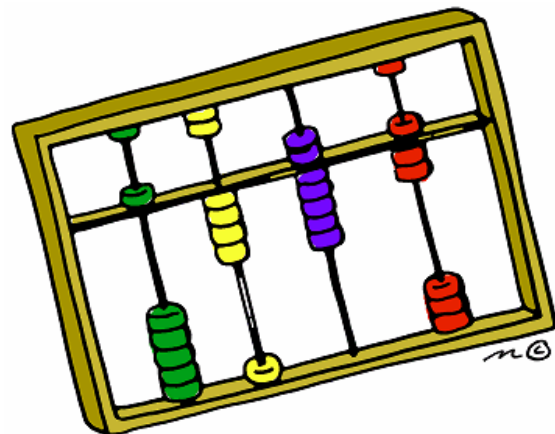
ETS Incidents	
Type	Total
Signals Received	58
Captures	1
Robberies where no signal received	0



2006 ANNUAL STATISTICS

On Call Statistics:

Agency	Number of Calls
ISD Radio Shop	46
Coroners Office	86
Probation	1650
D.A.'s Office	182
Environmental Health	81
Judges	780
County Parks	148
County Roads Department	186
County Sewer Department	320
County Water Department	84
Palo Alto Municipal Water	0
Coastside County Water	78
NTF	65
VTTF	34
Sheriff O.E.S.	107
Sheriff's Office Bomb Unit	94
Sheriff's Office Crime Lab	54
Sheriff's Office Major Crimes Unit	104
Sheriff's Office SHOP	50
Sheriff's Office Property Unit	4
Sheriff's Office SFIA	156
Millbrae Detectives	1
Millbrae Public Works	158
East Palo Alto CID	47
East Palo Alto Public Works	31
Millbrae Treatment Plant	39
Millbrae SCADA	2
Woodside Public Works	6



2006 ANNUAL STATISTICS

Glossary of abbreviations:

BIF	Brisbane Fire	MLF	Millbrae Fire
BRD	Broadmoor Police	MSS	Message Switch System
BRS	Brisbane Police	MST	Mobile Status Terminals
CAD	Computer Aided Dispatch	PAF	Palo Alto Fire
CCF	Central County Fire	PHS	Peninsula Humane Society
CLF	Colma Fire	PIF	Pacifica Fire
COF	County Fire	RCF	Redwood City Fire
DBS	Database System	SBF	San Bruno Fire
DCF	Daly City Fire	SCC	Santa Clara County
DPW	Public Works	SCF	South County Fire Authority
EMD	Emergency Medical Dispatch	SMF	San Mateo Fire (City of)
EMS	County Emergency Medical System	SOF	South San Francisco Fire
EPA	East Palo Alto Police	SOS	Sheriff's Office
ESF	South San Francisco EMS	SPL	Special Details
FCF	Foster City Fire	TRA	Transit Police
FMA	Fire Mutual Aid	UNK	Unknown
HMB	Half Moon Bay Police	WOF	Woodside Fire
HMF	Half Moon Bay Fire		
IAF	San Francisco International Airport		
LMA	Law Mutual Aid		
MCI	Mass Causality Incident		
MLB	Millbrae Police *		

* MLB PD began service with PSC on January 31, 2006

