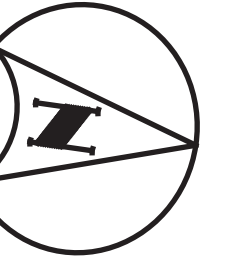


Alpine Road Corridor Study Improvement Concept Alternatives

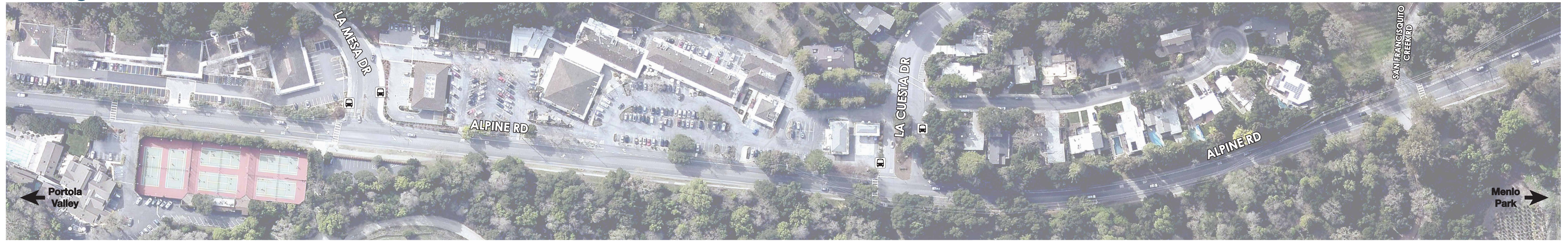
Safety Lighting
 Speed Feedback Sign
 Rapid Rectangular Flashing Beacon (RRFB)
 Bus Stop

Place colored dots in the green boxes or next to the blue callouts to provide feedback on proposed improvements according to the guidelines outlined below:

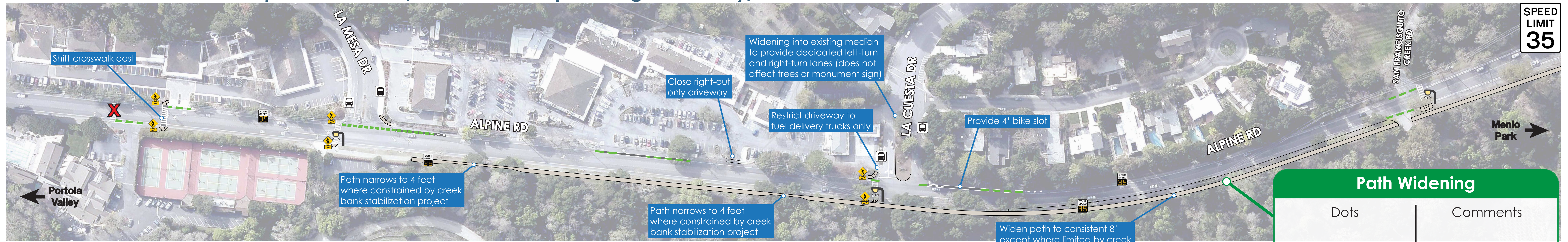
Green Dots: If you like the proposed improvement
Red Dots: If you don't like the proposed improvement
Yellow Dots: If you are unsure or need more information



Existing Conditions

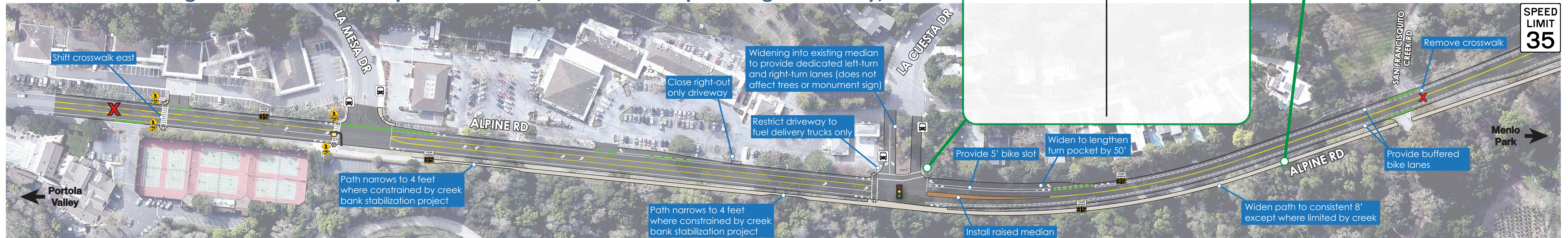


Alternative 1 - Minor Improvements (Does Not Require Right-of-Way)



Path Widening	
Dots	Comments





Alternative 2 - Signals and Minor Improvements (Does Not Require Right-of-Way)



Signal at La Cuesta Drive	
Dots	Comments

Remove crosswalk	
Dots	Comments

Alpine Road Corridor Study Improvement Concept Alternatives

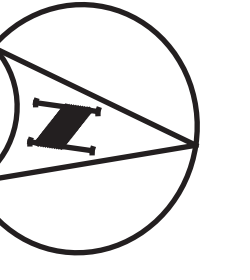
-  Safety Lighting
-  Rapid Rectangular Flashing Beacon (RRFB)
-  Speed Feedback Sign
-  Bus Stop

Place colored dots in the green boxes or next to the blue callouts to provide feedback on proposed improvements according to the guidelines outlined below:

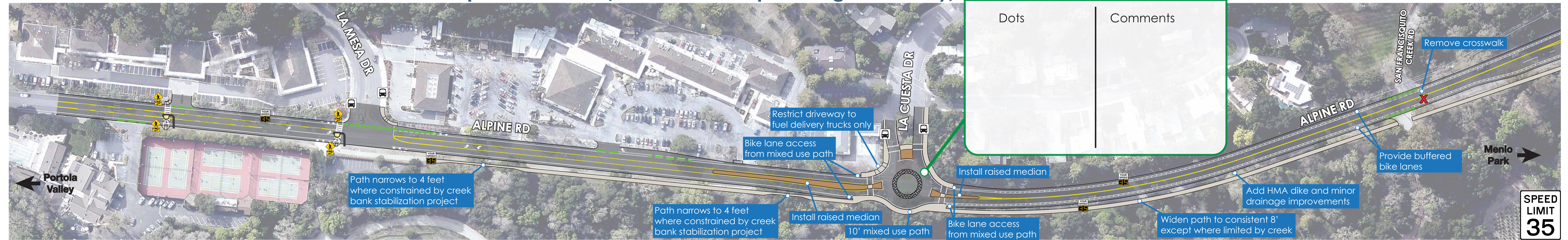
Green Dots: If you like the proposed improvement

Red Dots: If you don't like the proposed improvement

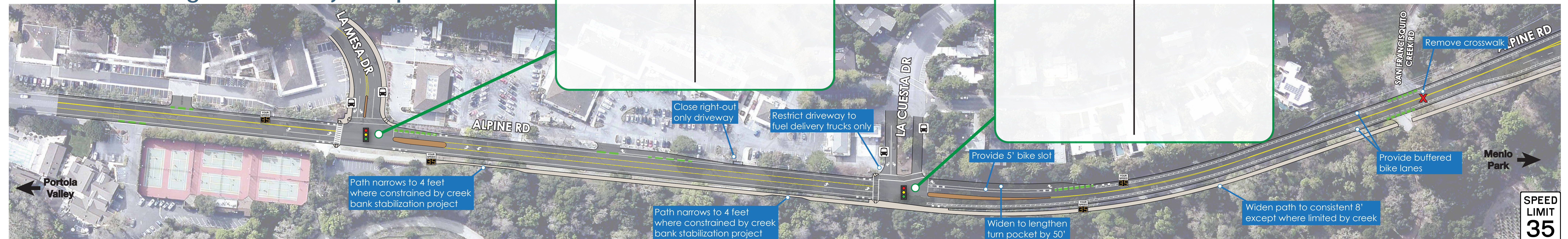
Yellow Dots: If you are unsure or need more information



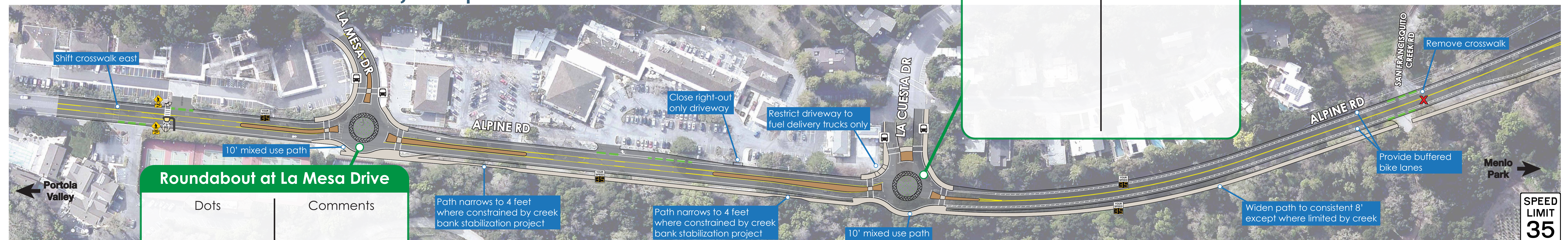
Alternative 3 - Roundabouts and Minor Improvements (Does Not Require Right-of-Way)







Alternative 4 - Signals and Major Improvements



Alternative 5 - Roundabouts and Major Improvements



Alpine Road Corridor Study Improvement Concept Alternatives

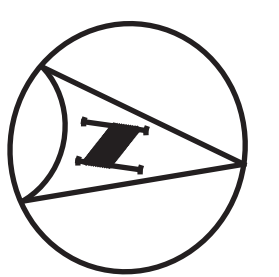
-  Safety Lighting
-  Rapid Rectangular Flashing Beacon (RRFB)
-  Speed Feedback Sign
-  Bus Stop

Place colored dots in the green boxes or next to the blue callouts to provide feedback on proposed improvements according to the guidelines outlined below:

Green Dots: If you like the proposed improvement

Red Dots: If you don't like the proposed improvement

Yellow Dots: If you are unsure or need more information



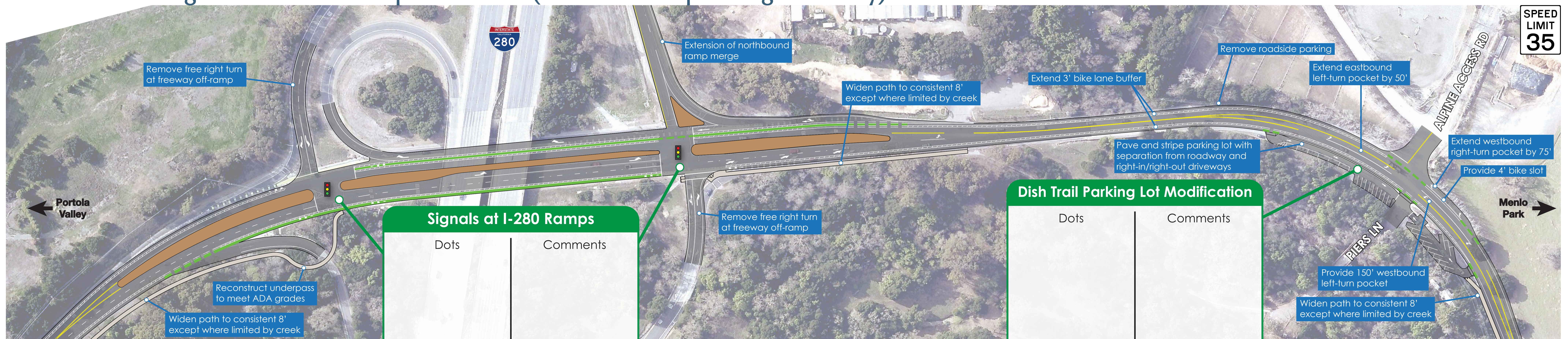
Existing Conditions



Alternative 1 - Minor Improvements (Does Not Require Right-of-Way)



Alternative 2 - Signals and Minor Improvements (Does Not Require Right-of-Way)



Signals at I-280 Ramps	
Dots	Comments

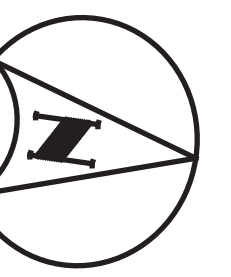
Dish Trail Parking Lot Modification	
Dots	Comments

Alpine Road Corridor Study Improvement Concept Alternatives

Safety Lighting Speed Feedback Sign
 Rapid Rectangular Flashing Beacon (RRFB) Bus Stop

Place colored dots in the green boxes or next to the blue callouts to provide feedback on proposed improvements according to the guidelines outlined below:

- Green Dots:** If you like the proposed improvement
- Red Dots:** If you don't like the proposed improvement
- Yellow Dots:** If you are unsure or need more information



Alternative 3 - Roundabouts and Minor Improvements (Does Not Require Right-of-Way)

Roundabouts at I-280 Ramps

Dots	Comments

Dish Trail Parking Lot Modification

Dots	Comments

Alternative 4 - Signals and Major Improvements

Removal of Free On-Ramp

Dots	Comments

Signals at I-280 Ramps

Dots	Comments

Dish Trail Parking Lot Modification

Dots	Comments

Alternative 5 - Roundabouts and Major Improvements





Roundabouts at I-280 Ramps

Dots	Comments

Dish Trail Parking Lot Modification

Dots	Comments

Alpine Road Corridor Study Improvement Concept Alternatives

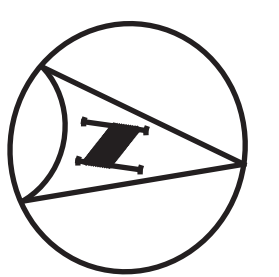
-  Safety Lighting
-  Rapid Rectangular Flashing Beacon (RRFB)
-  Speed Feedback Sign
-  Bus Stop

Place colored dots in the green boxes or next to the blue callouts to provide feedback on proposed improvements according to the guidelines outlined below:

Green Dots: If you like the proposed improvement

Red Dots: If you don't like the proposed improvement

Yellow Dots: If you are unsure or need more information



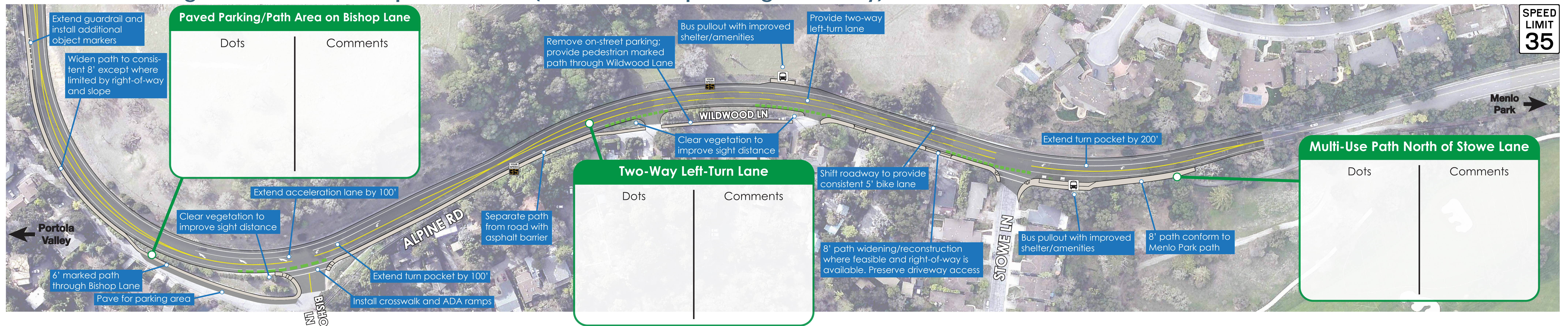
Existing Conditions



Alternative 1 - Minor Improvements (Does Not Require Right-of-Way)



Alternative 2 - Signals and Minor Improvements (Does Not Require Right-of-Way)



Alpine Road Corridor Study Improvement Concept Alternatives

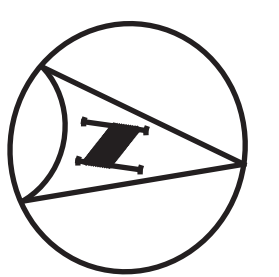
	Safety Lighting		Speed Feedback Sign
	Rapid Rectangular Flashing Beacon (RRFB)		Bus Stop

Place colored dots in the green boxes or next to the blue callouts to provide feedback on proposed improvements according to the guidelines outlined below:

Green Dots: If you like the proposed improvement

Red Dots: If you don't like the proposed improvement

Yellow Dots: If you are unsure or need more information



Alternative 3 - Roundabouts and Minor Improvements (Does Not Require Right-of-Way)

Alternative 4 - Signals and Major Improvements

Alternative 5 - Roundabouts and Major Improvements