

Routine Maintenance Program

County of San Mateo: Department of Public Works Parks Department



CEQA Scoping Meeting: January 29, 2019



Meeting Agenda

County of San Mateo Routine Maintenance Program
CEQA Scoping Meeting: January 29, 2019



1. Introductions
2. Meeting Purpose
3. Environmental Impact Report – Purpose and Process
4. Project Overview
5. Public Comments

Environmental Impact Report (EIR)

County of San Mateo Routine Maintenance Program
CEQA Scoping Meeting: January 29, 2019



- EIR - Informational document to provide public agencies and the public with information regarding:
 - The effect of the proposed project on the environment
 - Ways in which the significant effects may be avoided, minimized, or mitigated
 - Alternatives to the proposed project that could reduce or eliminate significant effects

Purpose of CEQA Scoping Meeting



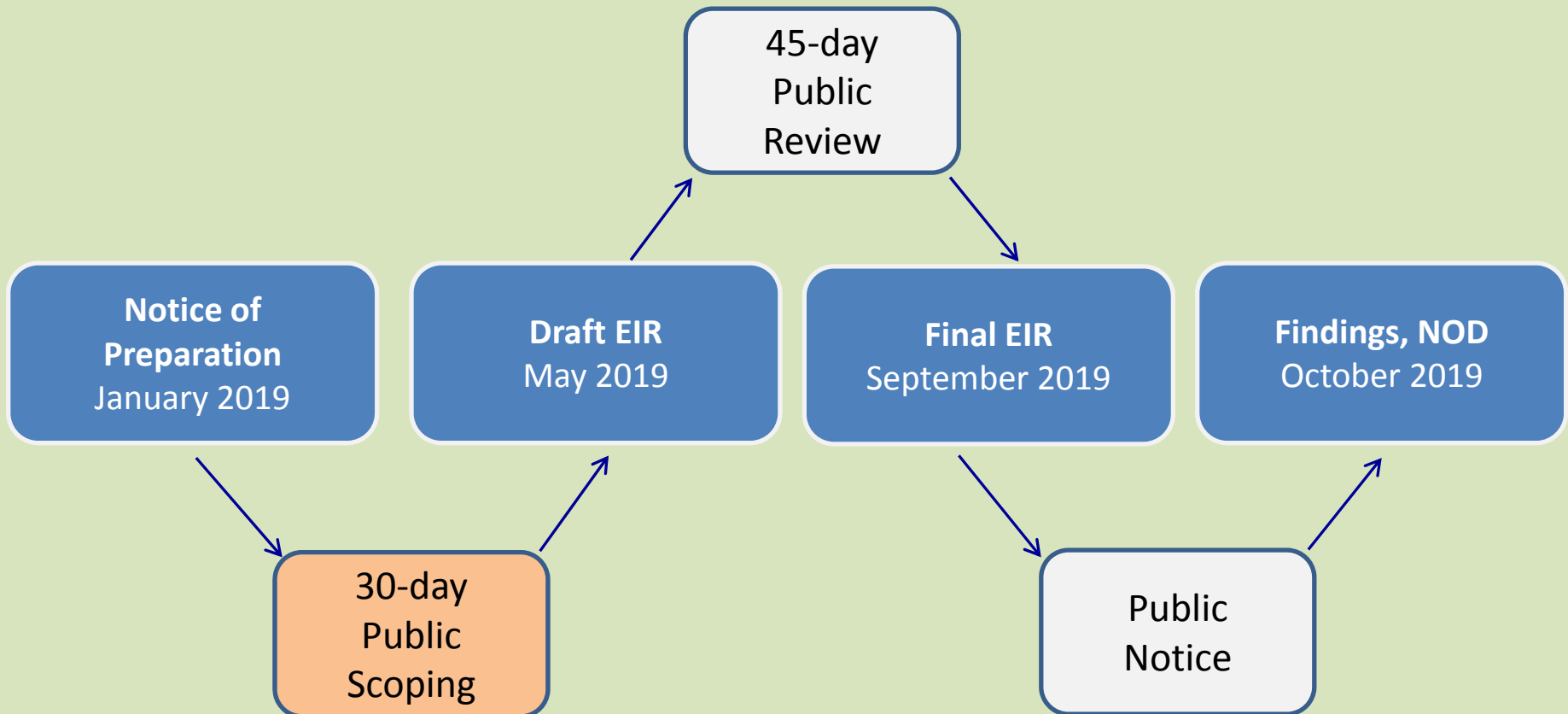
County of San Mateo
CEQA Scoping Meeting: January 29, 2019

EIR Scoping Process:

- To allow the public and agencies to provide input on the scope and content of the project's environmental impact analysis.
- Scoping comments inform the scope (breadth and range) and nature of the CEQA environmental analysis.

EIR Process Overview

County of San Mateo Routine Maintenance Program
CEQA Scoping Meeting – January 29, 2019



County Maintenance Needs



The County's Department of Public Works (DPW) and Parks Department (Parks) conduct routine maintenance activities to ensure County facilities are properly functioning and operational.

- Maintenance occurs in unincorporated County areas, established flood zones, County parks which may be in unincorporated areas or in cities, and at County facilities which may be located in cities.
- **DPW:** Responsible for 300 miles of County roads, roadside ditches, culverts, bridges, low impact development stormwater facilities, flood control facilities, Half Moon Bay Airport, San Carlos Airport, and closed landfills.
- **Parks Department:** Responsible for County park and recreational facilities including trails, campgrounds, fire access roads, and Coyote Point Marina.

Maintenance Program Purpose



The purpose of the Routine Maintenance Program is to:

- Provide a comprehensive and consistent approach to conducting routine maintenance activities.
- Establish consistent/approved methods, BMPs, and impact avoidance and mitigation approaches.
- Streamline permitting process and provide longer-term regulatory approvals.
- Improve scheduling certainty to conduct maintenance.
- Protect and enhance natural resources.

Maintenance Program Objectives

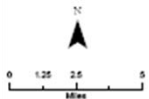
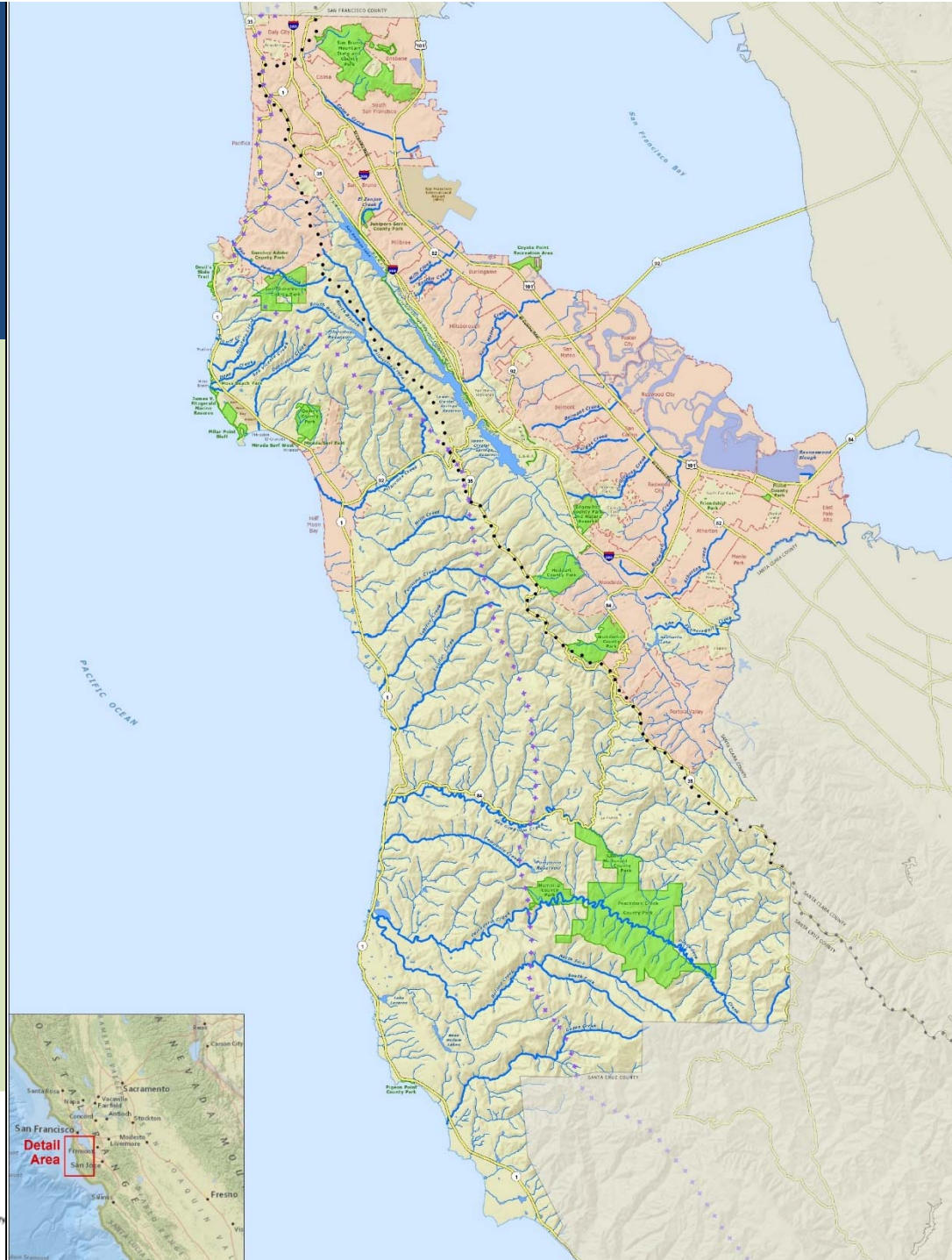


1. Maintain the functional integrity and operational quality and capacity of County channels, stormwater facilities, roads, trails, and other recreational facilities.
2. Prevent roadway flooding, reduce safety hazards, and minimize potential threats to the structural integrity of roadways, bridges, and stormwater and channel facilities within unincorporated San Mateo County.
3. Repair and stabilize eroding streambanks and failing culverts in a timely manner to prevent larger-scale slope failures, avoid emergencies, and minimize sedimentation to downstream water bodies.
4. Maintain County facilities and vegetation conditions for public safety purposes including, maintaining visibility, reducing fire risk, and reducing the potential for unauthorized encampments.

Maintenance Program Objectives (continued)

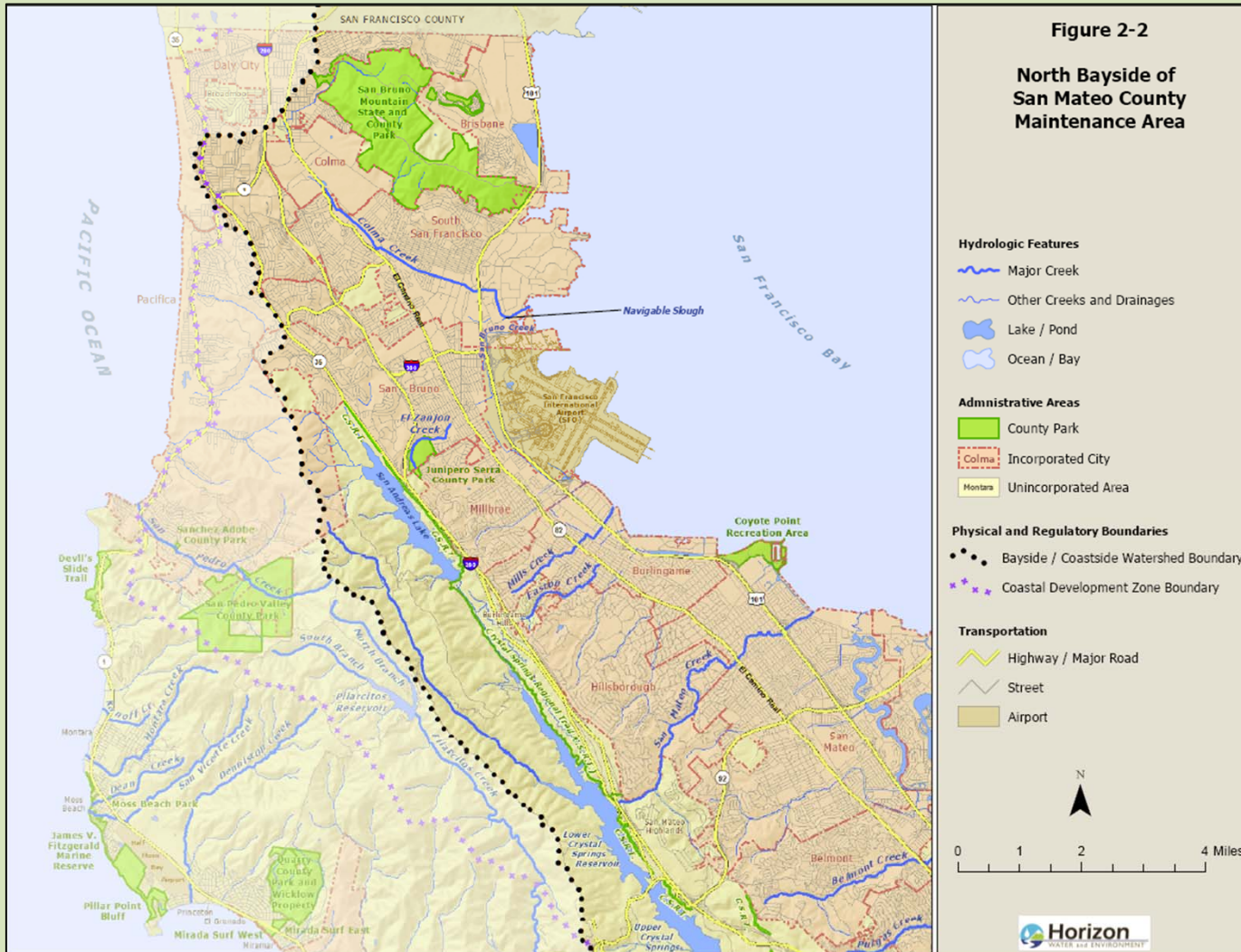
5. Avoid and minimize potential impacts to the natural environment when conducting routine maintenance activities by incorporating detailed appraisals of habitat, species, and resource conditions while identifying and prioritizing maintenance needs and developing site-specific maintenance plans.
6. Protect and enhance the natural environment at County facilities.
7. Provide regulatory assurance to enable long-term permits with fewer delays and improved work planning and implementation.
8. Develop mitigation approaches in a more strategic and integrative manner that targets areas in the County that could benefit from habitat enhancement, restoration, and/or preservation.

Program Area

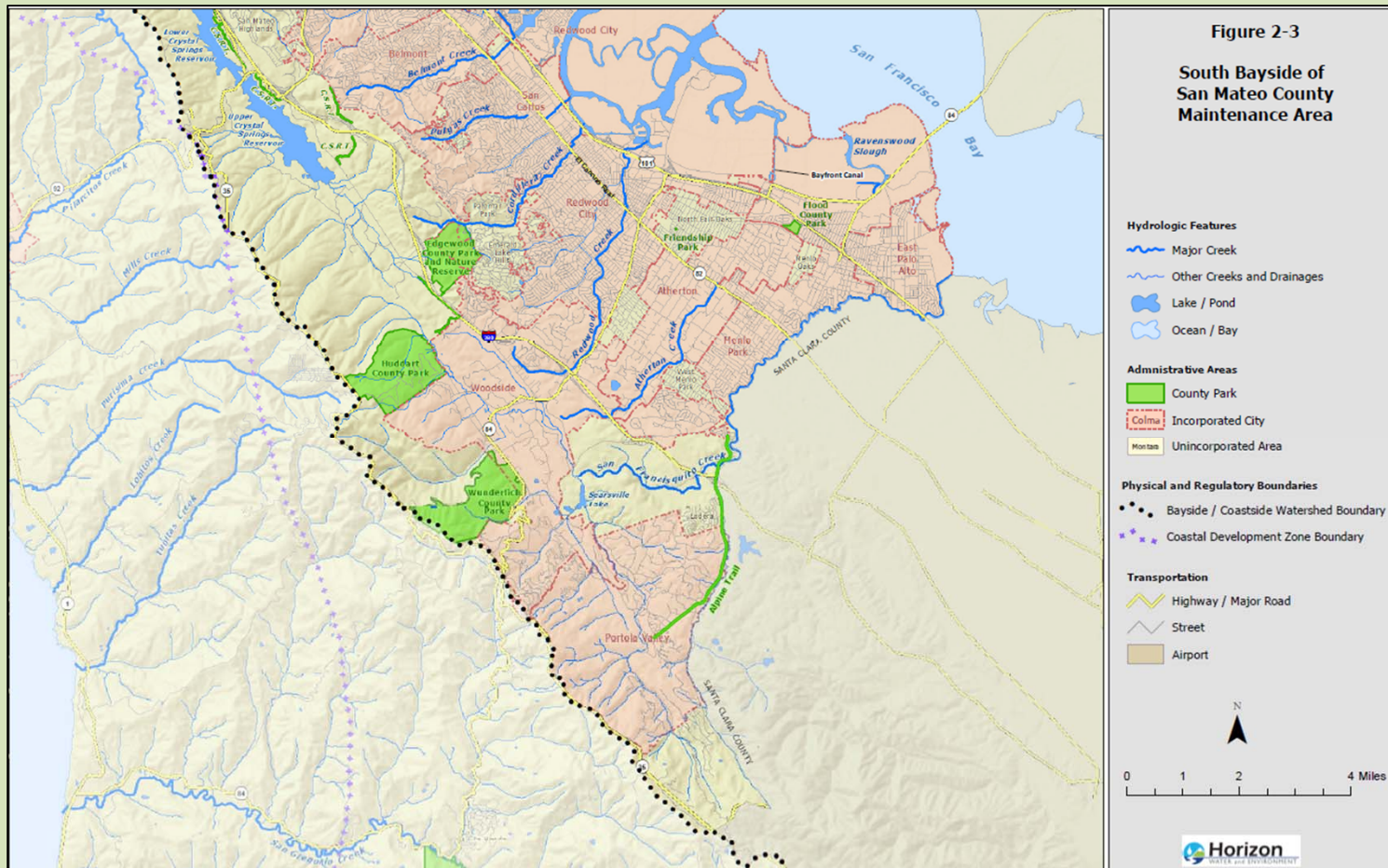


- | | |
|----------------------------|---|
| Hydrologic Features | Administrative Areas |
| Major Creek | County Park |
| Other Creeks and Drainages | Incorporated City |
| Lake / Pond | Unincorporated Area |
| Ocean / Bay | |
| Transportation | Physical and Regulatory Boundaries |
| Highway / Major Road | Bay Side / Coast Side Watershed Boundary |
| Airport | Coastal Development Zone Boundary |

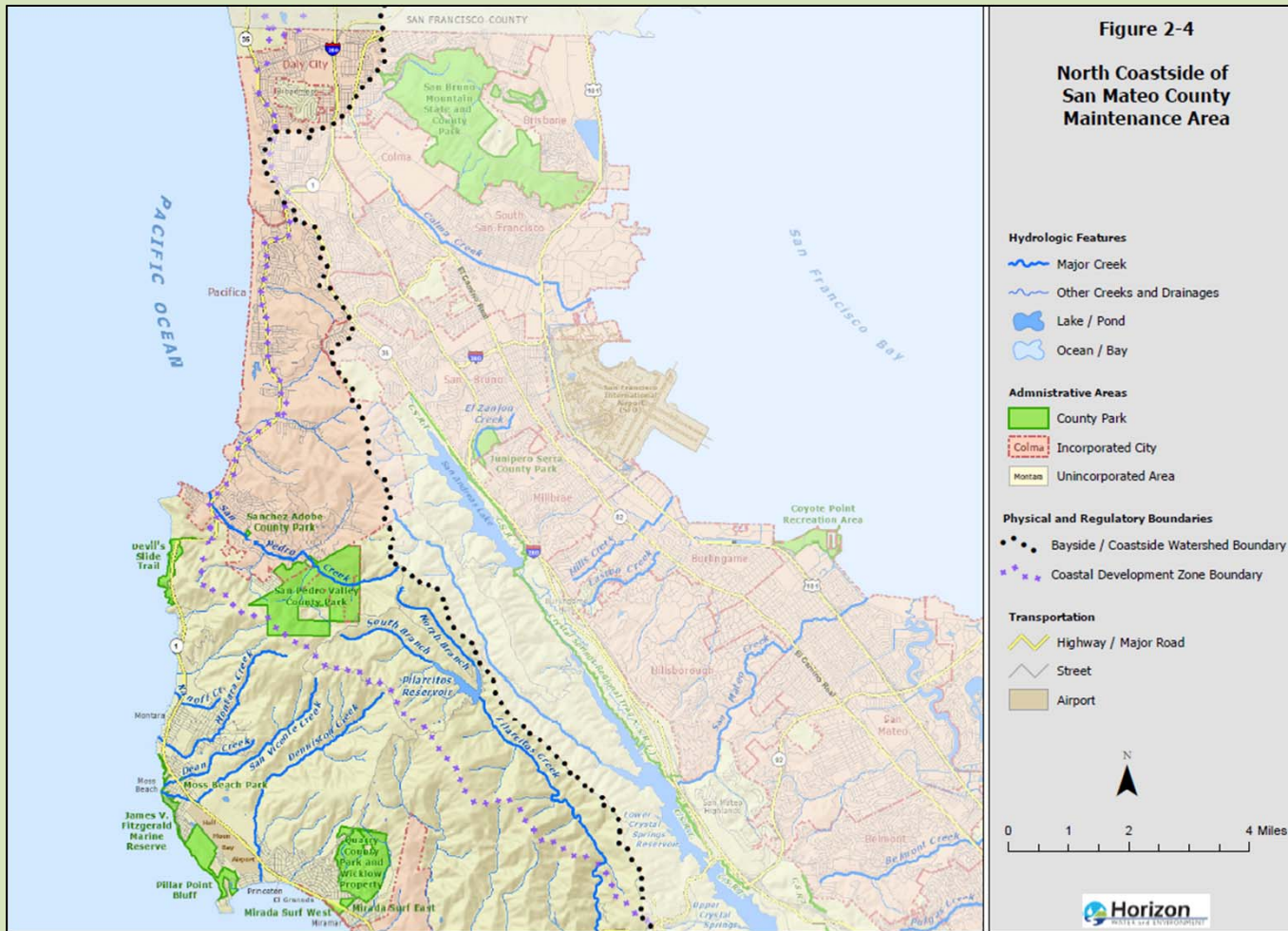
Program Area: North Bayside



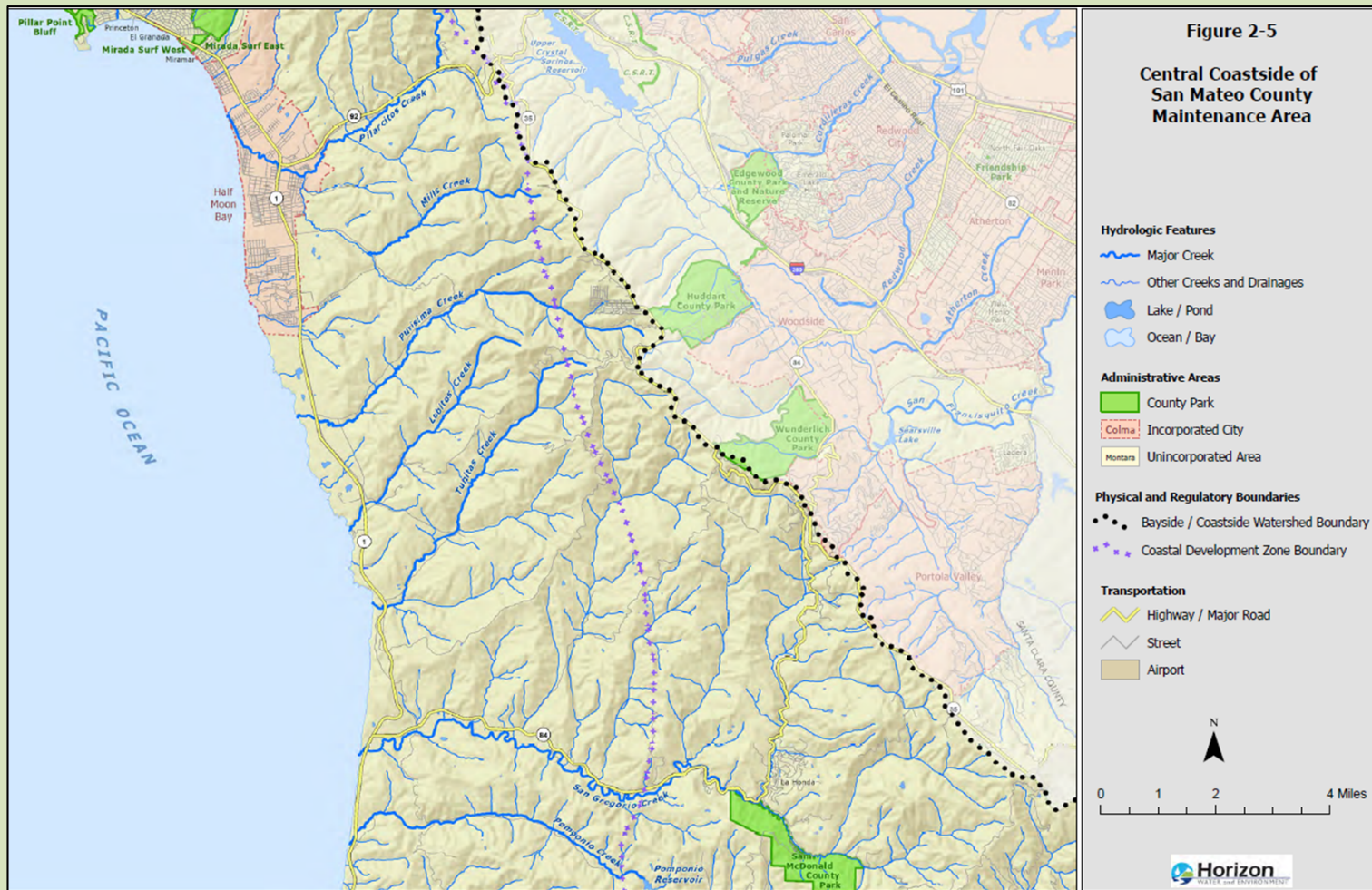
Program Area: South Bayside



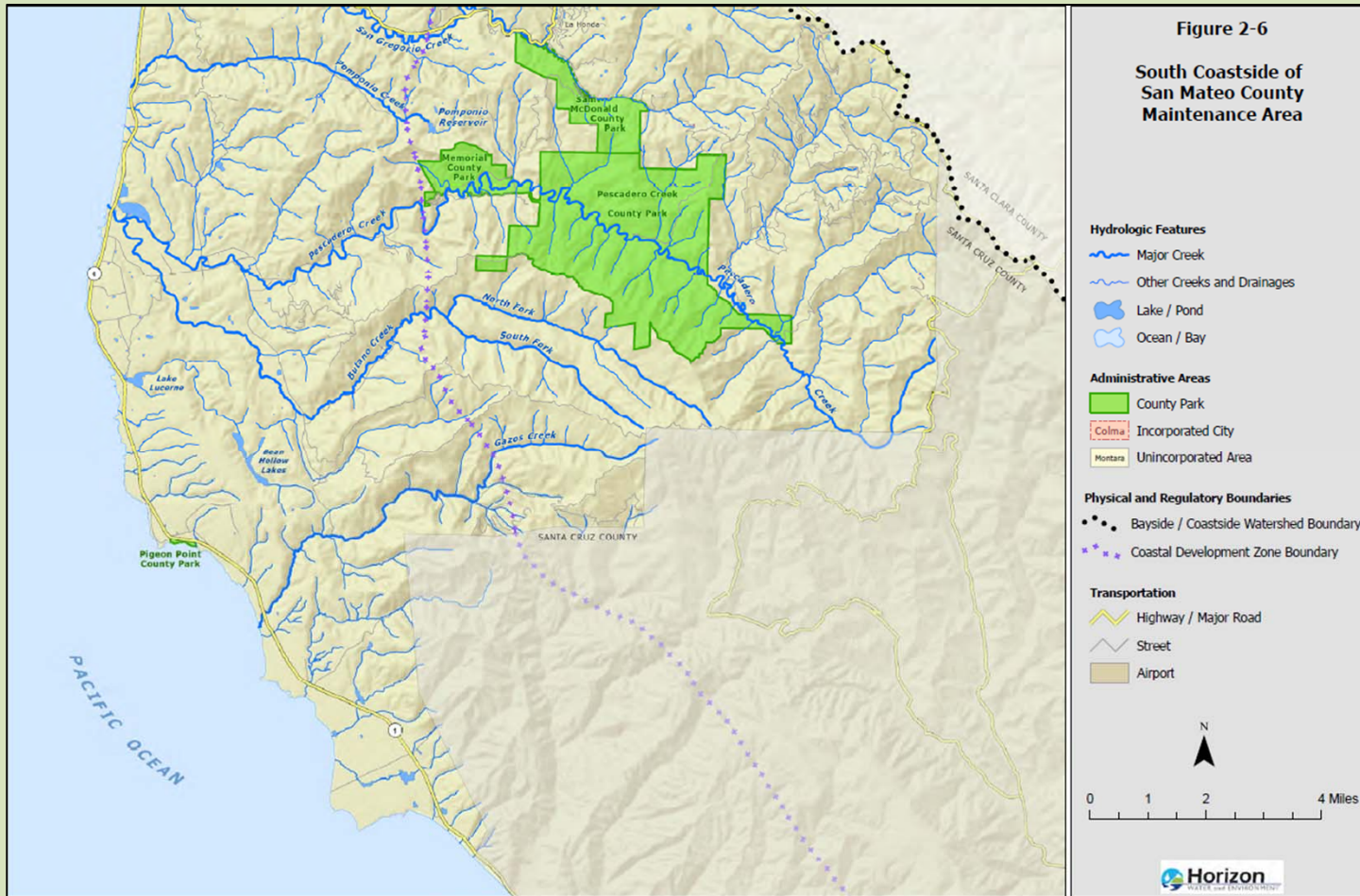
Program Area: North Coastside



Program Area: Central Coastside



Program Area: South Coastside



DPW Maintenance Activities

Facility Type	Maintenance Activity
Channel crossings	Sediment and debris removal Culvert repair or replacement
Bridges	Erosion protection at bridge abutments Seal/crack repair
Roadside ditch relief culverts	Repair and replace damaged culverts Sediment and debris removal
Flood control channels, drainages, creeks	Sediment and debris removal Bank stabilization Downed tree management Vegetation management



Belmont Creek (Old County Rd)



George St. Bridge



Crystal Springs Rd & Polhemus Rd

DPW Maintenance Activities (continued)

Facility	Maintenance Activity
Roads	Repaving and repair of damaged paved roads Street sweeping Slip-out and slide repairs Vegetation management
Roadside ditches and swales	Ditch/swale resurfacing Sediment management Debris removal Vegetation management
Low Impact Development (LID) Sites	Vegetation and thatch removal Light sediment and debris clearing, planting



Lower Bear Gulch Road/La Honda Rd



Tunitas Rd. Slide



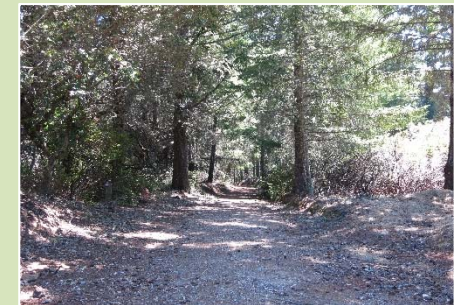
Farallone St. Ditch/LID

Parks Dept. Maintenance Activities

Facility	Maintenance Activity
Paved Roads	Mowing along roads
Roadside ditches	Ditch clearing (vegetation and debris)
Unpaved Access Roads/Trails	Trail tread repair and re-grading Mowing and trimming Non-native vegetation removal Fire fuel management
Culverts	Replacement in-kind Replacement of undersized culverts



Fire Road in San Bruno Mtn. Park



Richards Rd Trail, Huddart Park



Weiler Ranch Trail, San Pedro Valley Park

Parks Dept. Maintenance Activities (continued)

Facility	Maintenance Activity
Campgrounds, picnic areas, other park features	Fuel management for defensible space Hazard tree removal and pruning Non-native removal (grazing, mechanical, herbicide)
Grassland/Meadow/Prairie	Annual mowing Grazing Brush removal
LID Maintenance	Periodic plant/soil replacement Periodic sediment removal



Quarry Park



Pescadero Creek Park



Fitzgerald Marine Reserve, LID site

Parks Dept. Maintenance Activities (continued)

Facility	Maintenance Activity
Marina Facilities: <ul style="list-style-type: none">- Docks- Sewer Lines/Tanks- Water Lines- Launch Ramp	Repair/replace damaged dock boxes and concrete Periodic sewer line/ejector tank cleaning Water line inspections Replace damaged floats, cleats and bumper striping Debris removal from launch ramp Seawall revetment repair
Bridges along roads/trails	Erosion protection at bridge abutments Seal/crack repair



Coyote Point Marina

Maintenance Occurs when Threshold Conditions are Met (impact avoidance and minimization approach)

- Maintenance at culverts and storm drainage facilities when:
 - Culvert is damaged or inoperable
 - Culvert or storm drain is clogged with conveyance capacity reduced
- Bridge maintenance when:
 - Protective paint coating has chipped
 - Scour damage undermines stability
 - Cracks on bridge deck
 - Sediment/debris build-up reduces channel capacity
- Bank stabilization when:
 - Repair is needed to ensure flood capacity or reduce sediment input
- Road maintenance when:
 - Cracks or potholes
 - Deterioration of unpaved road surface
 - Slip-out/slide is threat to utilities and/or public safety

Maintenance Occurs when Threshold Conditions are Met (impact avoidance and minimization approach)

- Vegetation and fuel management when:
 - Downed tree increases risk of erosion, flooding, or bank failure.
 - Line of sight is blocked and to ensure public safety
 - Vehicle and pedestrian clearance is blocked
- Ditches and swales maintenance when:
 - Capacity reduced, or erosion below existing grade.
- LID and Green Infrastructure maintenance when:
 - Sediment, trash and weed removal is needed to restore capacity and function.
- Trail maintenance repairs when:
 - Trail/fire access road tread has worn down and ruts are evident.
 - Signs or other structures are damaged.

Best Management Practices

- Specific BMPs developed for all work activities.
- Maintenance Program protects natural resources at work sites.
- Many BMPs developed to avoid and minimize impacts to special-status plants and wildlife at County facilities.

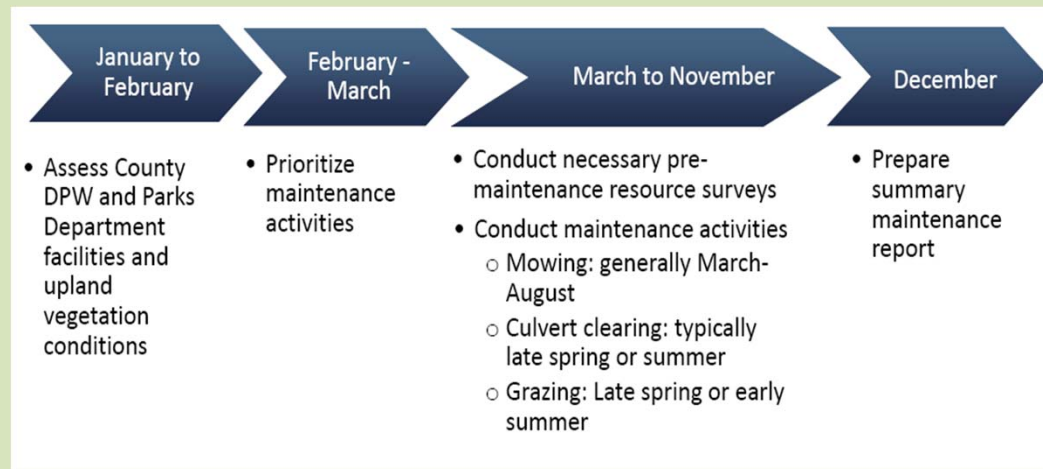
BMP Number	BMP Title	BMP Description
BIO-1	Environmental Awareness Training	Prior to commencing maintenance activities in a given year, all participating maintenance personnel will attend a worker environmental awareness training program. The training will include a brief review of special-status species, sensitive habitats, and other sensitive resources that may exist in the project area, including field identification, habitat requirements, and the legal status and protection of each relevant species, as well as locations of sensitive biological resources. The training will include materials concerning the following topics: sensitive resources, resource avoidance, permit conditions, and possible consequences for violations of State or Federal environmental laws. The training will cover the maintenance activity's conservation measures, environmental permits, and regulatory compliance requirements. It will include printed material and an oral training session by a qualified biologist.
BIO-2	Minimize Injury or Mortality of Fish and Amphibian Species during Dewatering	<p>Prior to dewatering a construction site, native fish and amphibian species will be captured and relocated if necessary to avoid direct mortality and minimize take. Streams that support a sensitive species (e.g., steelhead, California red-legged frog) will require a relocation effort led by a qualified biologist. The following measures are consistent with those defined as reasonable and prudent by NMFS for projects concerning several central California Evolutionarily Significant Units for coho salmon and steelhead trout (e.g., NMFS 2008c).</p> <ul style="list-style-type: none"> ▪ Fish relocation activities will be performed only by qualified fisheries biologists that have experience with fish capture and handling. ▪ Perform relocation activities during morning periods when air temperatures are coolest. ▪ Periodically measure air and water temperatures. Cease activities when water temperatures exceed temperatures allowed by CDFW and NMFS...

Mitigation Approaches

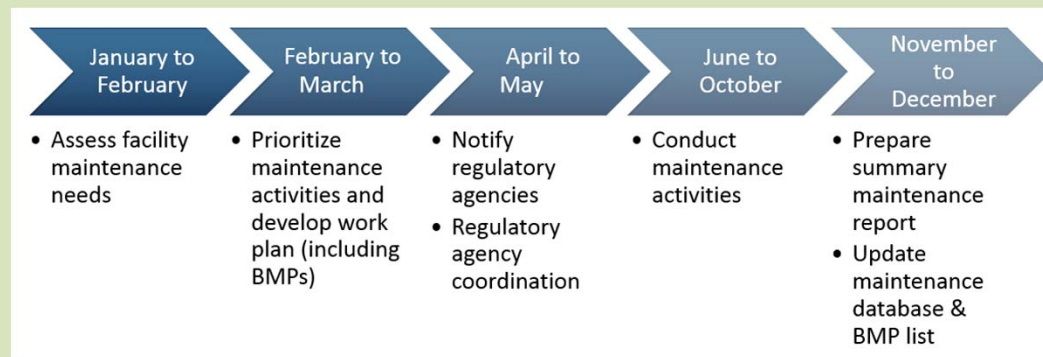
- Mitigation is necessary when residual impacts occur to wetlands, waters, and federally or state listed species/habitat
- Mitigation approaches include:
 - On-site mitigation (i.e., restore habitat impacted by maintenance activity in local vicinity)
 - Off-site mitigation (i.e., within same watershed or general region)
 - Establishing conservation easements or deed restrictions
 - Partnering with local watershed organizations
 - Purchasing credits from mitigation banks
- For CEQA, mitigation measures would be implemented to mitigate project-related impacts identified through the CEQA analysis

Maintenance Work Timing

Typical Timeline for Maintenance Activities that are Non-Ground Disturbing



Typical Timeline for Maintenance Activities that are Ground Disturbing



CEQA Resource Topics to be Evaluated

County of San Mateo Routine Maintenance Program
CEQA Scoping Meeting – January 29, 2019

- Aesthetics
- Air quality
- Biological resources
- Cultural resources
- Geology and soils
- Greenhouse gas emissions
- Hazards and hazardous materials
- Hydrology and water quality
- Land use
- Noise
- Recreation
- Transportation/traffic
- Tribal Cultural Resources
- Public services
- Utilities
- Cumulative impacts

How to Comment

County of San Mateo Maintenance Program
CEQA Scoping Meeting – January 29, 2019



Submit oral or written comments tonight. Fill out a speaker card and wait to be called or write your comments on a written comment form.

Or submit written comments via mail or email. Send comments to:

County of San Mateo
Attn: Krzysztof Lisaj
555 County Center, 5th Floor
Redwood City, CA
SMC_RMP_Comments@smcgov.org

Comments accepted until **5:00 p.m. on Tuesday, February 5, 2019.**