



COUNTY OF SAN MATEO
OFFICE OF COMMUNITY AFFAIRS

Presents

Immigrant Inclusion

Good for Communities, Families,
and the Economy



Background

In late 2020, the San Mateo County was awarded a national Gateways for Growth grant, one of just 19 local governments selected across the U.S. to receive this highly competitive award.

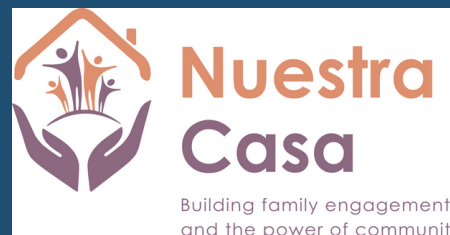


The Gateways for Growth award consists of a **quantitative research report** on the demographic and economic contributions immigrants make in their communities.

It also provides tailored technical assistance to help us **draft, execute, and communicate a multi-sector Immigrant Inclusion Strategic Plan.**

Immigrant Inclusion Survey

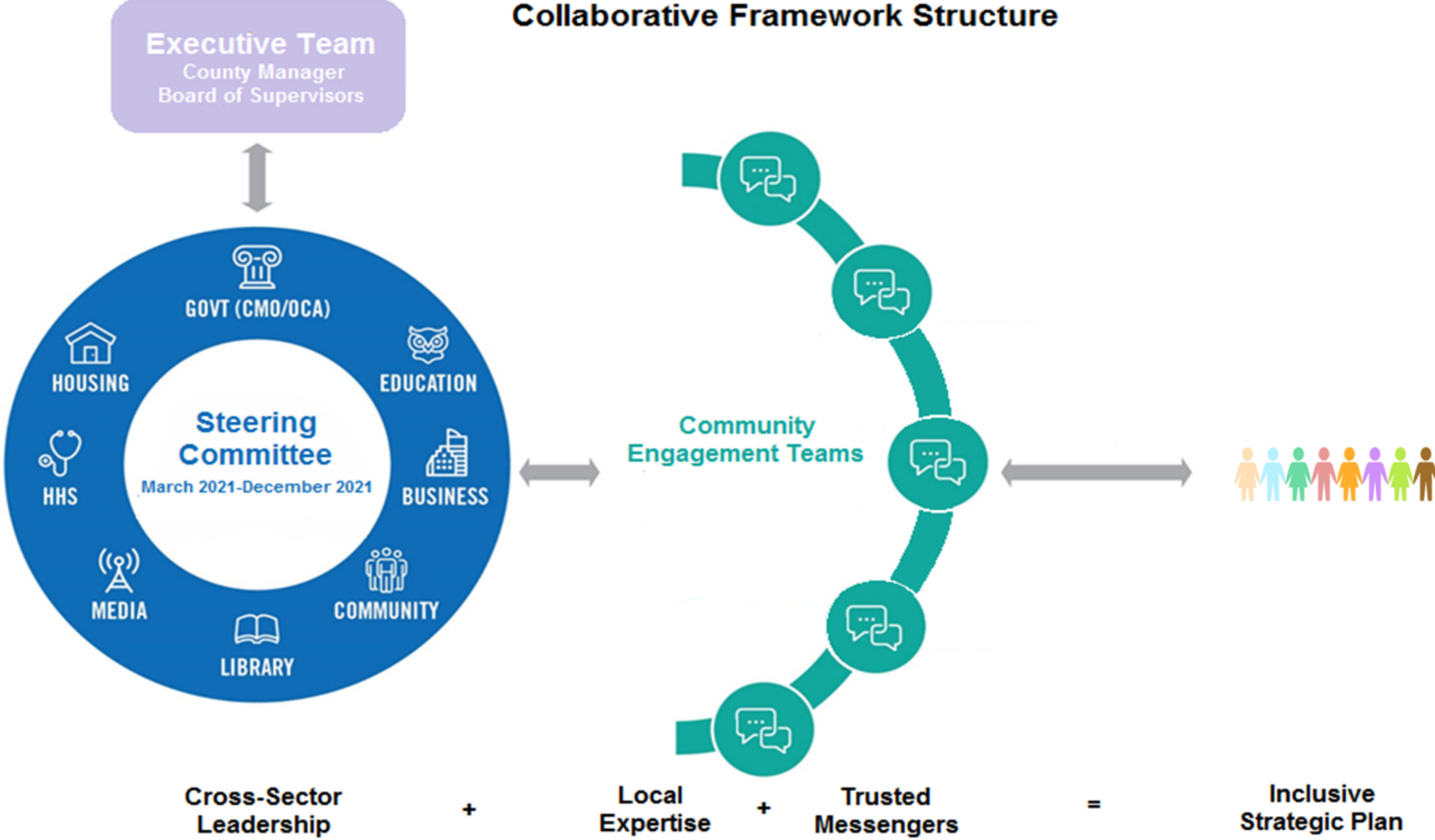
Drafted in collaboration with over 50 community-based organizations with support from the Stanford Gardener Center.



COMMUNITY LEGAL SERVICES IN EAST PALO ALTO

john w. gardner center for youth and their communities

Collaborative Framework Structure



Immigrant Inclusion Survey



- For anyone who **identifies as an immigrant** and **lives, works or goes to school** in San Mateo County.
- All responses are **anonymous** and **confidential**.
- All questions are **optional** -- only answer what you want to answer.
- Will be open for about 4 weeks.

Immigrant Inclusion Survey

- The survey is available in 12 languages: Arabic, Chinese, English, Hindi, Japanese, Korean, Portuguese, Russian, Spanish, Tagalog, Tongan, & Vietnamese.
- Collects data on 5 key areas:

Safe
Communities

Economic
Development

Educational
Opportunities
&
Outcomes

Equitable
Access to
Services

Community
Connectedness
&
Engagement

Moving Forward

The responses to the survey will identify programs and policies that are currently working, barriers that can be eliminated, and ways in which the immigrant community can be more effectively and strategically served for the next 3 to 5 years.



Call to Action



Encourage your community to take the survey!

Get flyers and social media content in 12 languages on our website:

<https://tinyurl.com/ImmigrantSP>



Access the survey here:

<https://tinyurl.com/SMCoSurvey>

Call to Action



Ways to promote:

- Email clients with direct link
- Phone + text banking
- Flyer distribution
- Share information during events, classes, or client intakes
- Provide time to complete the survey (about 10 min)



COUNTY OF SAN MATEO
OFFICE OF COMMUNITY AFFAIRS

Questions?

Contact us:

ImmigrantServices@smcgov.org